

## SWIR 1450nm Adjustable Bar Light



Effilux SWIR LED Bar Lights

Stock **#28-619** **1 In Stock**

⊖ 1 ⊕ **S\$1,890<sup>00</sup>**

**ADD TO CART**

Volume Pricing	
Qty 1+	<b>S\$1,890.00</b> each
Need More?	<a href="#">Request Quote</a>

Product Downloads

### SPECIFICATIONS

#### General

**Model Number:**  
EFFI-FLEX-5-1450-KIT-ELS-1000-24V

**Number of LEDs:**  
5

**Type of Illumination:**  
LED Illuminator

Effilux	<b>Manufacturer:</b>
Bar Light	<b>Geometry:</b>
Strobed or Constant	<b>Illumination Mode:</b>
<b>Physical &amp; Mechanical Properties</b>	
51.0 W x 135.0 L x 49.0 H	<b>Dimensions (mm):</b>
360	<b>Weight (g):</b>
<b>Optical Properties</b>	
SWIR	<b>Color:</b>
1,450.00	<b>Wavelength (nm):</b>
<b>Hardware &amp; Interface Connectivity</b>	
M12, 4 pins	<b>Connector:</b>
24VDC	<b>Input Voltage (V):</b>
<b>Power Supply:</b> Power Supply Required and Sold Separately. USA: <a href="#">#15-874</a> Europe: <a href="#">#15-875</a> Japan: <a href="#">#73-409</a> Korea: <a href="#">#73-409</a> China: <a href="#">#15-874</a>	
<b>Threading &amp; Mounting</b>	
2 Rails (1 for M6 T-Nuts)	<b>Mount:</b>
<b>Environmental &amp; Durability Factors</b>	
0 to 50	<b>Operating Temperature (°C):</b>
IP50	<b>Environmental Rating:</b>
<b>Regulatory Compliance</b>	
<a href="#">View</a>	<b>Certificate of Conformance:</b>

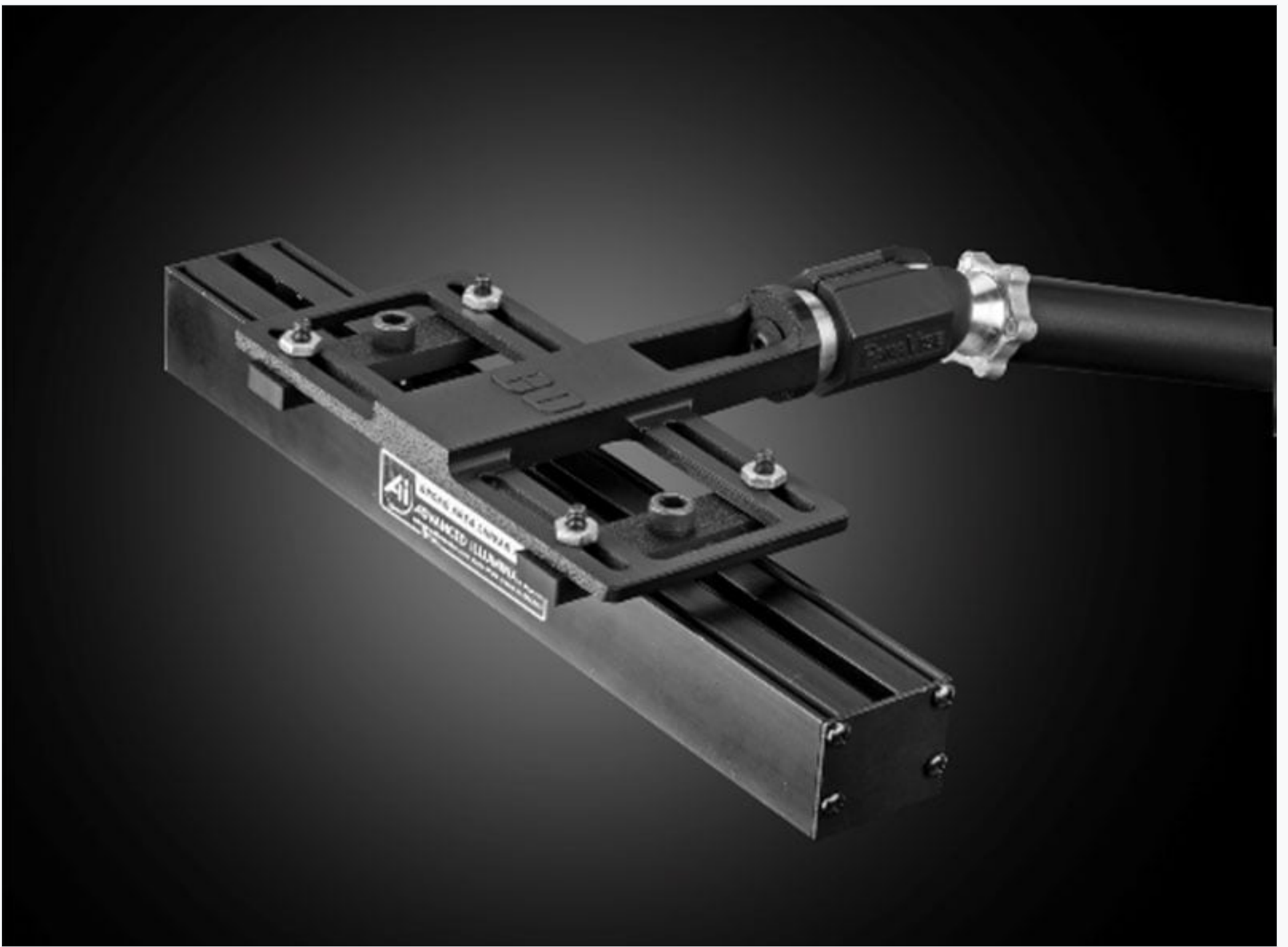
## PRODUCT DETAILS

- Full Range of SWIR Wavelengths Available
- High Intensity and Uniform Lighting
- Adjustable Illumination Angles

Effilux SWIR LED Bar Lights provide intense and uniform lighting for machine vision, sorting and silicon inspection applications. Available in wavelengths of 1050, 1200, 1300, 1450, 1550, and 1650nm. These bar lights feature adjustable lens positions and illumination angles for added flexibility. Effilux SWIR LED Bar Lights are ideal complements for applications utilizing TECHSPEC® C Series Fixed Focal Length SWIR Lenses, TECHSPEC® SilverTL™ SWIR Telecentric Lenses and LUCID Vision Labs Triton™ GigE Power over Ethernet (PoE) SWIR Cameras or Teledyne FLIR IIS Forge 1GigE SWIR Cameras.

**Note:** Included with the bar lights are one semi diffuse window and one 25° lens position kit.

### 3D-Printable Mount Files



Bar or Line Light Configuration

**DOWNLOAD  
NOW**

Designed for use with the [Articulating Arm Mounting Systems](#), these 3D-printed mounts allow easy positioning of lights in brightfield or darkfield setups. The design is based on mounting illumination to 1/4-20" breadboards or into 80/20 extrusion systems, but can be adapted based on user needs. Mounts are available for ring, bar, line, and inline spot lights.



Application Note

Illumination Mounts for Machine Vision Applications

[Read](#)



Video

Assembly of 3D Printed Mounts for Common Illumination Geometries

[Watch](#)