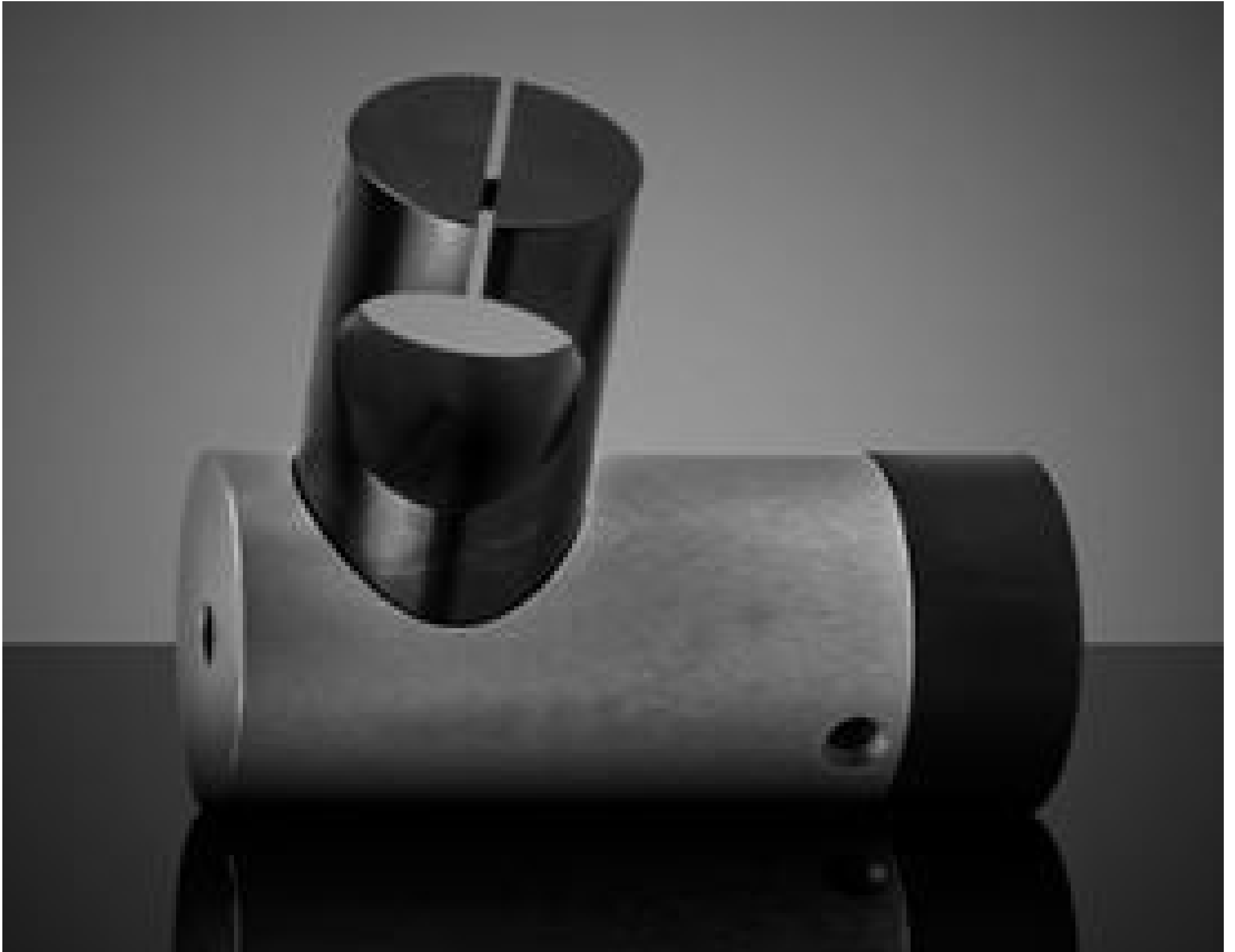


[See all 16 Products in Family](#)

## Premier Laser Diode Module/Detector M6 Threaded Mount



Premier Laser Diode Module/Detector Mount

Stock **#90-886** **4 In Stock**

⊖ 1 ⊕ **S\$137<sup>00</sup>**

**ADD TO CART**

### Volume Pricing

Qty 1-9	<b>S\$137.90</b> each
Qty 10+	<b>S\$130.90</b> each
Need More?	<a href="#">Request Quote</a>

### Product Downloads

### Regulatory Compliance

[Compliant](#)

RoHS 2015:

[View](#)

Certificate of Conformance:

[Compliant](#)

Reach 240:

## Product Details

- Compatible with a Variety of Laser Diode Modules
- Multiple Mount Configurations
- Compatible Diameters from 9.5-25.4mm

Laser Diode Mounts are available for all of the various sizes of laser diodes available from Edmund Optics®. These mounts are ideal tools for mounting a laser diode to optical tables or breadboards. Options include fixed mounts with no adjustment available and mounts offering tip and tilt adjustment for ease of alignment. Laser Diode Mounts may also function as heat sinks and effectively dissipate the heat lasers produce when left on for long periods of time. All mount options include necessary hardware.

**Note:** Please see the individual stock numbers for more detailed specifications. For help selecting the appropriate mount for your laser please [contact](#) our Technical Support.

---