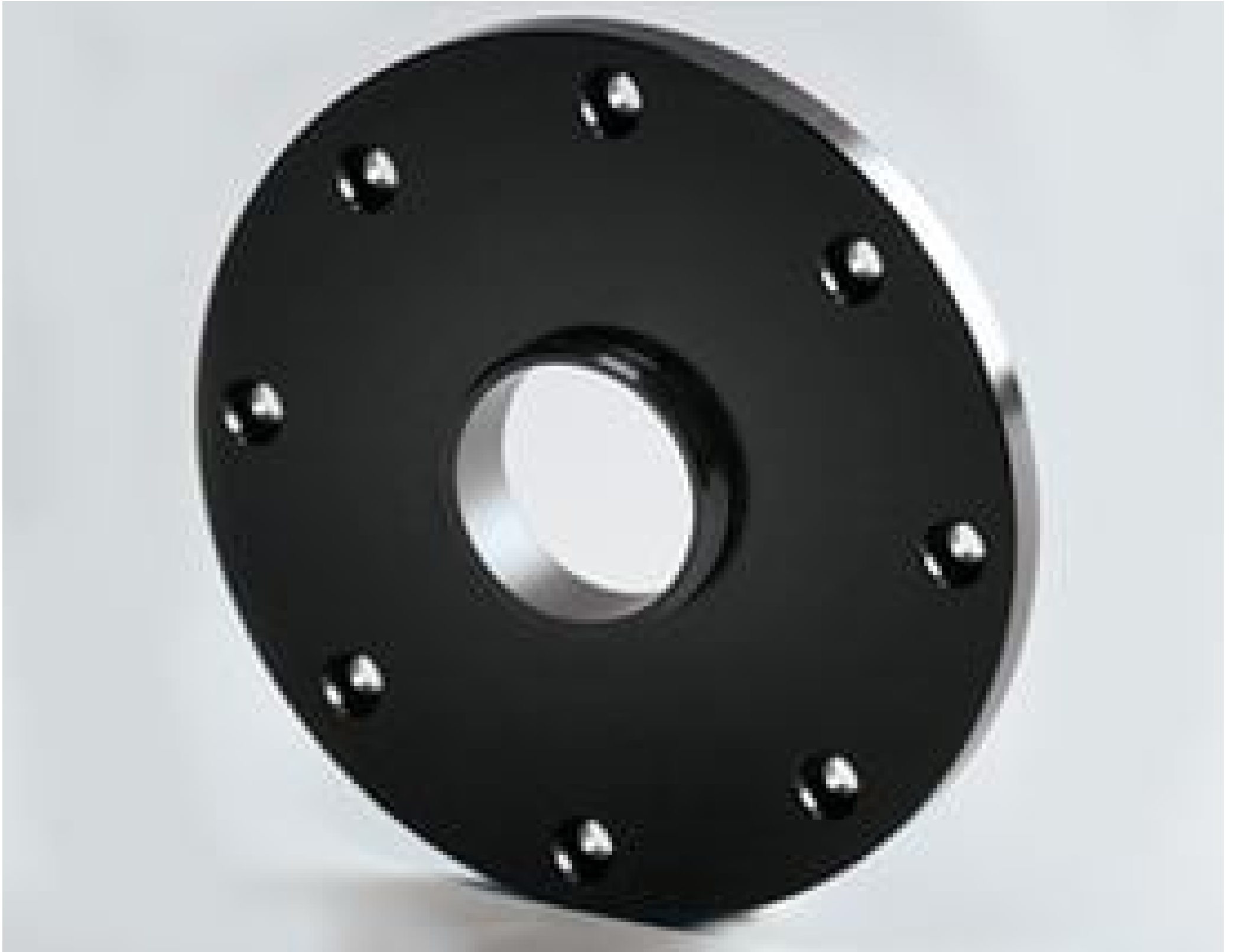


Male C-Thread Adapter Plate for #52-572



#58-360

Stock #58-360 **12 In Stock**

⊖ 1 ⊕ **\$\$102⁰⁰**

ADD TO CART

Volume Pricing

| | |
|------------|-------------------------------|
| Qty 1+ | \$\$102.20 each |
| Need More? | Request Quote |

Product Downloads

Physical & Mechanical Properties

5.00 **Thickness (mm):**

Black Anodized Aluminum **Construction:**

Threading & Mounting

1" x 32 TPI **Mounting Threads:**

Regulatory Compliance

Product Details

- Manual 360° Rotation
- Locking Thumb Screw for Secure Positioning and Alignment
- Compatible with [T-Mount Optic Mounts](#)

The Rotary Optic Mount allows smooth manual 360° rotation of optics for easy relative angular positioning. An ideal alternative for expensive rotary translation stages, this rotary optic mount can be used for aligning prisms, beamsplitters, polarizers and other optical components using a 180° (90°-0-90°) scale with 1° increments. The mount is compatible with [T-Mount Optic Mounts](#). The Rotary Optic Mount is constructed of black anodized aluminum with a stainless-steel lever. [#52-573](#) includes a 4" long stainless steel mounting post [#59-000](#).

Technical Information

