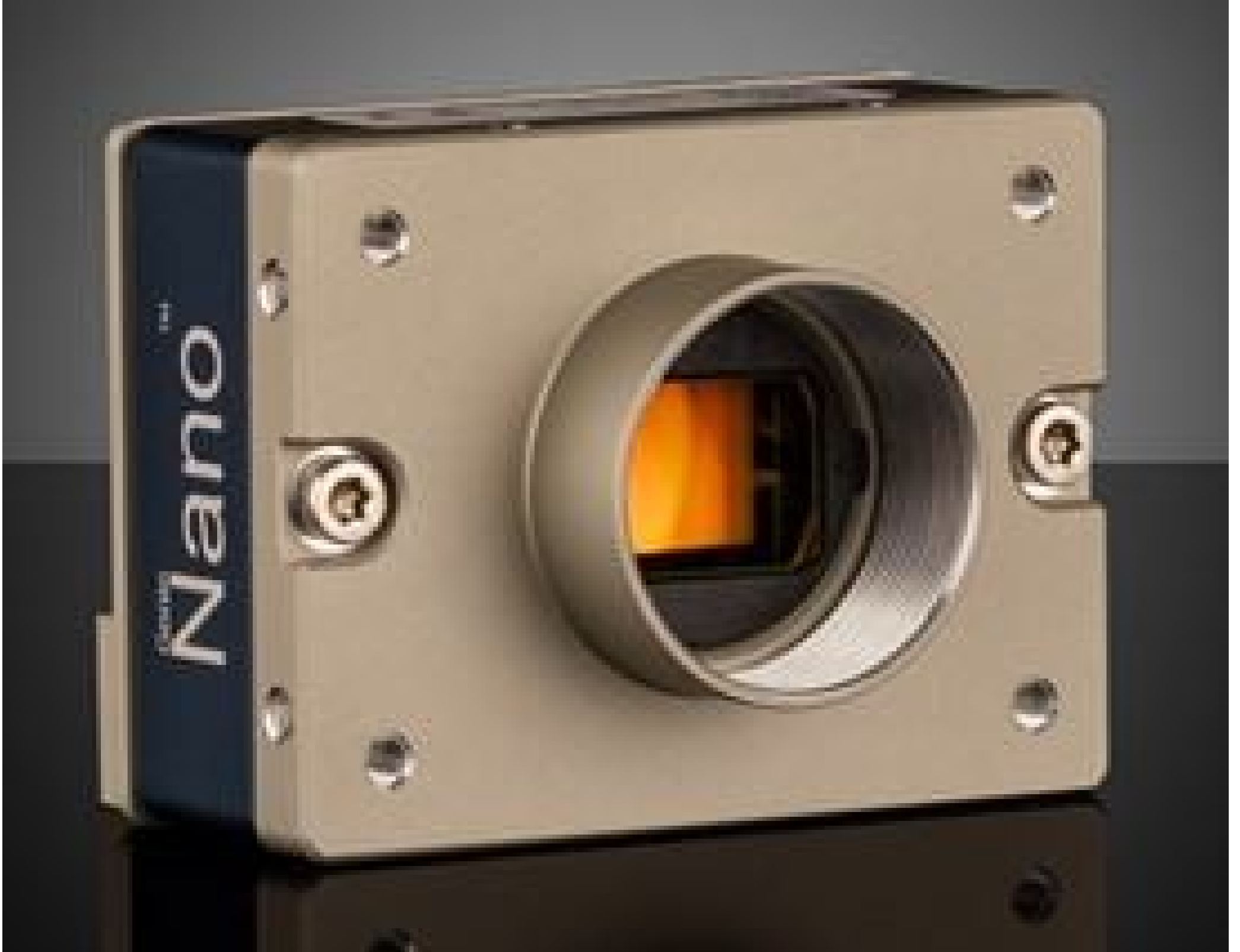


[See all 25 Products in Family](#)

M8105, Super 35mm Format Monochrome, Teledyne DALSA Genie Nano 5GigE PoE Camera (Recertified 05-P)

See More by [Teledyne DALSA](#)



Teledyne DALSA Genie™ Nano 5GigE Cameras (Front)



Stock #28-676-RCD-05P **RECERTIFIED** **1 In Stock**

[Similar Cameras](#)

- 1 + **\$6,902⁰⁰**

ADD TO CART

Volume Pricing	
Qty 1+	\$6,902.00 each
Need More?	Request Quote

Product Downloads

Monochrome **Spectrum:**

General

Monochrome Camera **Type:**

G5-GM31-M8105 **Model Number:**

Teledyne DALSA **Manufacturer:**

Genie Nano-5GigE **Camera Series:**

Physical & Mechanical Properties

59 x 59 x 41 (includes connectors and lens mount) **Dimensions (mm):**

183 **Weight (g):**

Full **Housing:**

Sensor

450MB **Image Buffer:**

Super 35MMFormat **Sensor Format:**

44.40 **Resolution (Megapixels):**

19.30 **Frame Rate (fps):**

8,192 x 5,420 **Pixels (H x V):**

3.20 x 3.20 **Pixel Size, H x V (µm):**

26.21 x 17.34 **Sensing Area, H x V (mm):**

ON Semi XGS45000 **Imaging Sensor:**

Progressive Scan CMOS **Type of Sensor:**

Global **Shutter Type:**

8/10 bit **Pixel Depth:**

Automatic, Programmable, or via External Trigger **Exposure Time:**

66.00 **Dynamic Range (dB):**

GigE Vision v2.0 **Machine Vision Standard:**

Electrical

9.4 - 9.6 **Power Consumption (W):**

Hardware & Interface Connectivity

5GigE (PoE) **Interface:**

5GigE, RJ45 with Screw Locks **Connector:**

Power Supply Required and Sold Separately:
USA: [#34-967](#)
Europe: [#34-967](#)
Japan: [#34-967](#)
Korea: Not Available
China: [#34-967](#) **Power Supply:**

2 opto-isolated input, 3 opto-isolated output **GPIOs:**

Hardware Trigger (GPIO) or Software Trigger **Synchronization:**

Back Panel **Interface Port Orientation:**

6-pin Hirose (HR10) **GPIO Connector Type:**

Threading & Mounting

M42-Mbunt **Mount:**

1/4-20 with Tripod Mount Adapter [#34-966](#) **Mounting Threads:**

Environmental & Durability Factors

Operating Temperature (°C):
-20 to +65

Storage Temperature (°C):
-30 to +65

Regulatory Compliance

Certificate of Conformance:
[View](#)

Product Details

- 5GBASE-T (5GigE) Ethernet Interface
- 3.2 to 12.4 Megapixel Sensors
- TurboDrive™ Technology for Data Transfer Speeds up to 985 MB/s
- Compact (32 x 44 x 59mm), Lightweight, and Robust Design



Teledyne
Authorized
Distributor

Teledyne DALSA Genie™ Nano 5GigE Cameras are available with a range of SONY Pregius sensors with resolutions from 3.2MP to 12.4MP. The 5GigE Ethernet interface provides data transfer speeds up to 5 times faster than the conventional GigE interface, which when combined with TurboDrive™ technology allows these cameras to achieve frame rates up to 187fps while retaining full image quality. The included Sopera CamExpert software provides a simple image acquisition interface with Sopera LT SDK libraries for OEM and system integration applications. Teledyne DALSA Genie™ Nano 5GigE Cameras are packaged in a compact, lightweight and robust all-metal housing, making them ideal for electronics inspection, industrial automation, and Intelligent Traffic Systems (ITS) applications. These cameras support the AIA GigE Vision Standard to facilitate easy integration into imaging systems.

Note: Frame rates achievable through TurboDrive™ or Burst Acquisition could vary with factors such as image quality and resolution.

Sopera LT is a free image acquisition and control software development toolkit (SDK) for Teledyne DALSA'S 1D cameras / 2D cameras / 3D Laser Profiler cameras and frame grabbers. Hardware independent in nature, Sopera LT offers a rich development ecosystem for machine vision OEMs and system integrators. Sopera LT supports image acquisition from cameras and frame grabbers based on machine vision standards including GigE Vision™, CameraLink®, CameraLink HS™, CoaXpress®, and USB3 Vision™.