

[See all 4 Products in Family](#)

LUCID Vision Labs™ SENSaIZ SZP123S-001, Sony IMX500, 12.33MP, Color Camera

See More by [LUCID Vision Labs™](#)



Stock #25-114 CLEARANCE **5 In Stock**

⊖ 1 ⊕ **\$361^{.20}**

ADD TO CART

Volume Pricing	
Qty 1+	\$361.20 each
Need More?	Request Quote

Product Downloads

Color **Spectrum:**

General

Color Camera **Type:**

SZP123S-001 **Model Number:**

Lucid Vision Labs **Manufacturer:**

SENSAIZ

Camera Series:

Physical & Mechanical Properties

Dimensions (mm):
55 x 40 x 35 (excludes lens protrusion)

Weight (g):
48

Housing:
Full

Optical Properties

Focal Length FL (mm):
4.35

Sensor

Sensor Format:
1/2.3"

Resolution (Megapixels):
12.33

Pixels (H x V):
4,056 x 3,040

Pixel Size, H x V (µm):
1.55 x 1.55

Imaging Sensor:
Sony IMX500

Type of Sensor:
Progressive Scan CMOS

Shutter Type:
Rolling

Electrical

Power Consumption (W):
3 (PoE+)

Hardware & Interface Connectivity

Connector:
100BASE-T RJ45

Power Supply:
Power over Ethernet (PoE+)

Environmental & Durability Factors

Operating Temperature (°C):
-10 to +55

Storage Temperature (°C):
-30 to +60

Regulatory Compliance

Certificate of Conformance:
[View](#)

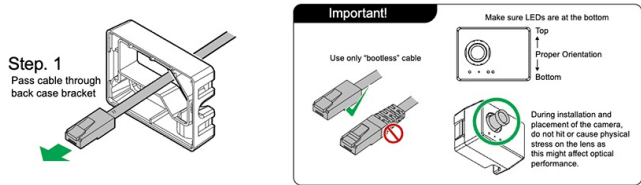
Product Details

- 12.33 Megapixel Sony IMX500 Intelligent Vision CMOS Sensor
- Power Over Ethernet (PoE) for Easy Integration
- Compact 55 x 40 x 35 mm Form Factor
- Sony [ATRIOS](#) Software is Required for Use

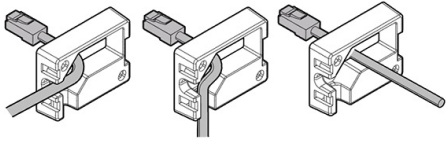
LUCID Vision Labs™ SENSAIZ Intelligent Vision CMOS Camera integrates Sony's IMX500 sensor and ATRIOS software platform to migrate image processing and AI image analysis directly to the camera without the need for external processing or memory. Sony's IMX500 CMOS sensor is designed with a stacked pixel chip and logic chip to place AI capabilities directly on the sensor, greatly reducing processing time and increasing security. This intelligent vision sensor shifts many of the standard image processing steps from a cloud-based system onto the camera itself, capturing the information and meaning of an image and allowing for only the necessary data to be output. This provides lower latency, offline image processing, increased security, reduced power requirements, and lower cost. Sony's ATRIOS software platform provides an all-in-one place for device management, AI development, and system and cloud integration. LUCID Vision Labs™ SENSAIZ Intelligent Vision CMOS Camera features a built-in camera lens, lightweight and compact housing, and Ethernet PoE connection for simple system integration. This camera is ideal for a wide range of applications from security and manufacturing to automation and robotics.

NOTE: SENSAIZ cameras can only be used with Sony's [ATRIOS](#) software platform. ATRIOS software can be purchased directly through Sony. See the Technical Images tab for mounting instructions.

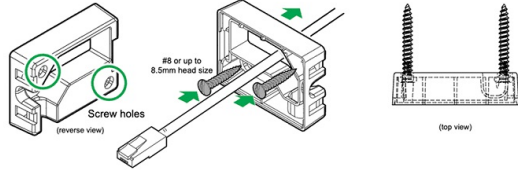
Technical Information



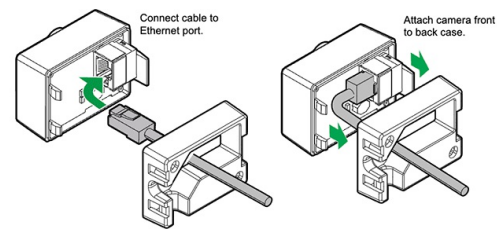
Step 2
Adjust the cable orientation to fit into one of the case's grooves or straight through, depending on your mounting surface.



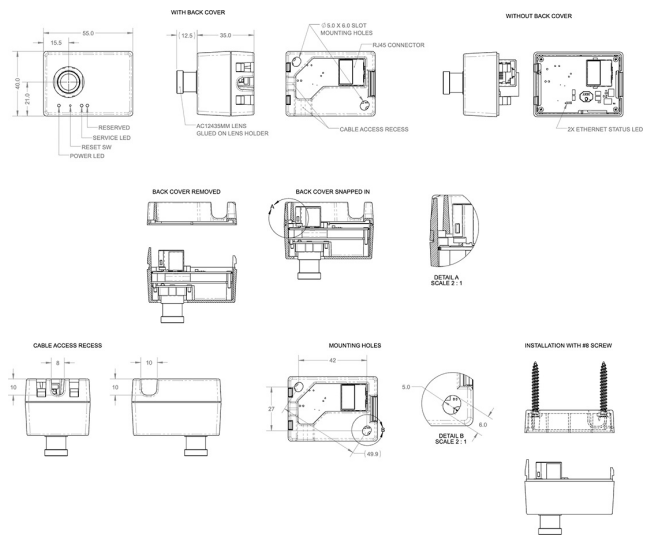
Step 3
Mount back case bracket to surface using the screw holes. Use #8 or similar screw, head size up to 8.5mm, mounting screws sold separately.



Step 4
Connect the cable and camera together.



LUCID Vision Labs™ SENSAiZ Camera Mounting Guide



LUCID Vision Labs™ SENSAiZ Camera Dimensions