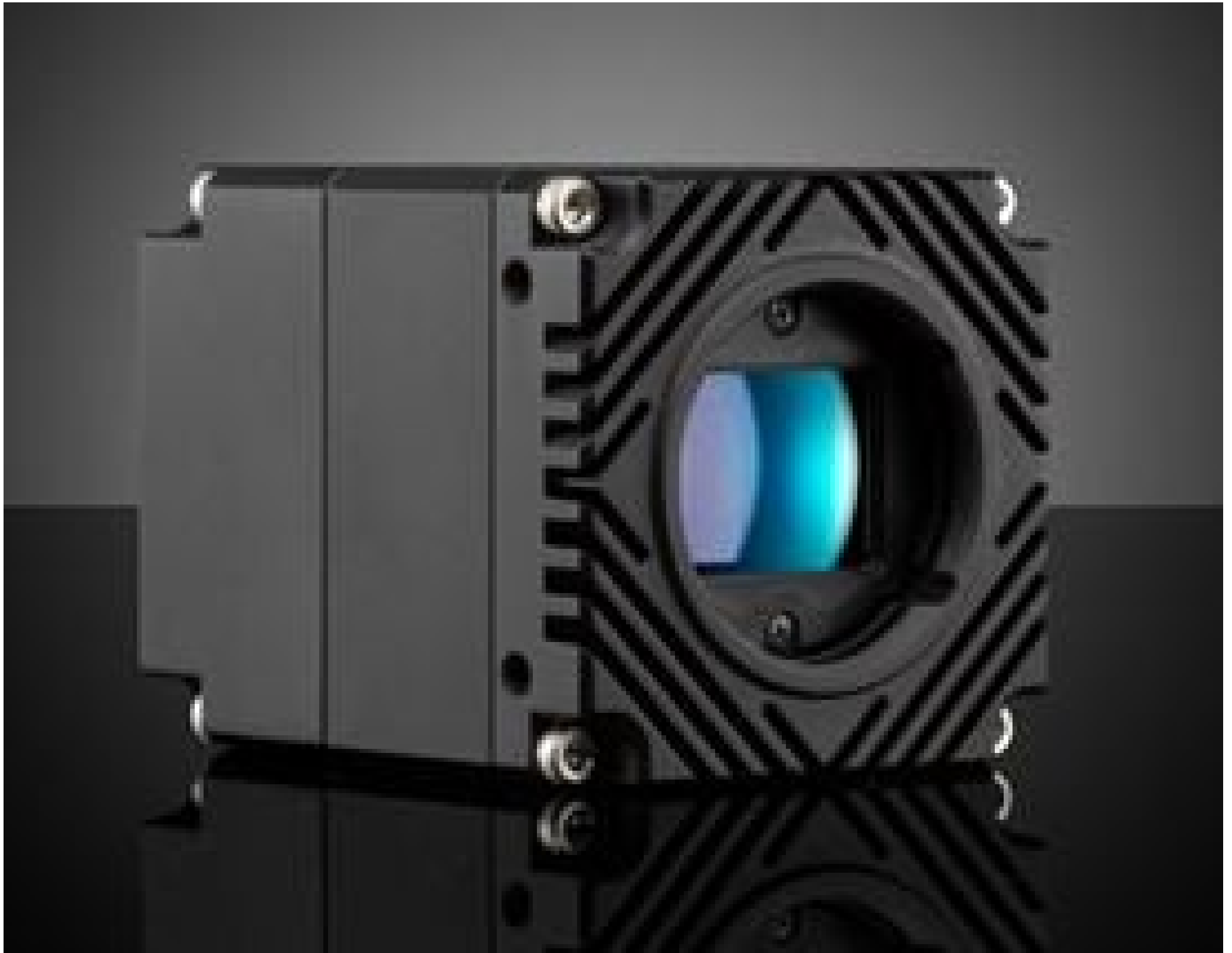


[See all 33 Products in Family](#)

Lucid Vision Labs Atlas™ ATL314S-MNL, Sony IMX342, 31.4MP, Monochrome Camera

See More by [LUCID Vision Labs™](#)



LUCID Vision Labs Atlas™ Power over Ethernet (PoE) 5GBASE-T (5GigE) Cameras

Stock **#25-129** [CONTACT US](#)

1 [+](#) [-](#) **S\$8,582⁰⁰**

ADD TO CART

Volume Pricing

Qty 1+	S\$8,582.00 each
Need More?	Request Quote

Product Downloads

Monochrome

Spectrum:

General

Monochrome Camera

Type:

ATL314S-MNL

Model Number:

Lucid Vision Labs

Manufacturer:

Camera Series:

Physical & Mechanical Properties

Dimensions (mm):
55 x 55 x 65 (excludes connectors)

Weight (g):
240

Housing:
Full

Sensor

Image Buffer:
380MB

Sensor Format:
APS-C

Resolution (Megapixels):
31.40

Frame Rate (fps):
17.90

Pixels (H x V):
6,464 x 4,852

Pixel Size, H x V (µm):
3.45 x 3.45

Sensing Area, H x V (mm):
22.30 x 16.74

Imaging Sensor:
Sony IMX342

Type of Sensor:
Progressive Scan CMOS

Shutter Type:
Global

Pixel Depth:
8/10/12 Bit

Exposure Time:
47µs - 10s (Normal);
2µs - 32µs (Short Mode)

Dynamic Range (dB):
0 - 48

Machine Vision Standard:
GigE Vision v2.0

Electrical

Power Consumption (W):
8 (External Power Supply)
8.5 (PoE)

Hardware & Interface Connectivity

Interface:
5GigE (PoE)

Connector:
5GigE, M12

Power Supply:
Power over Ethernet (PoE) or via GPIO with 12-24VDC Power Supply

GPIOs:
1 opto-isolated input, 1 opto-isolated output, 2 non-isolated bi-directional ports

Synchronization:
Hardware Trigger (GPIO), Software Trigger, or PTP (IEEE 1588)

Interface Port Orientation:
Back Panel

GPIO Connector Type:
8-pin MB

Threading & Mounting

Mount:
No Lens Mount

Mounting Threads:
¼-20 with Tripod Mount Adapter [#13-751](#)

Environmental & Durability Factors

Operating Temperature (°C):
-20 to +55

Storage Temperature (°C):
-30 to +60

Certificate of Conformance:

[View](#)

Product Details

- 5GBASE-T (5GigE) Ethernet Interface
- 2.8 to 31.4 Megapixel Sensors
- Compact 55 x 55 x 70mm Design
- TFL-Mount Compatible with [TECHSPEC® CA Series FFL Lenses](#)

LUCID Vision Labs Atlas™ Power over Ethernet (PoE) 5GBASE-T (5GigE) Cameras have a small footprint and feature large format, high resolution sensors with up to 31.4MP at 17.9fps. During manufacturing, their imaging sensors are actively aligned to minimize sensor tilt and rotation, resulting in sharp and crisp images even in the corners. The 5GigE Ethernet interface provides up to 5X faster speeds than GigE for applications requiring high bandwidth. These cameras also feature a TFL-Mount that is easily adaptable to F-Mount. LUCID Vision Labs Atlas Power over Ethernet (PoE) 5GBASE-T (5GigE) Cameras are ideal for industrial applications including [factory automation](#), autonomous robotics, and biometrics.

;