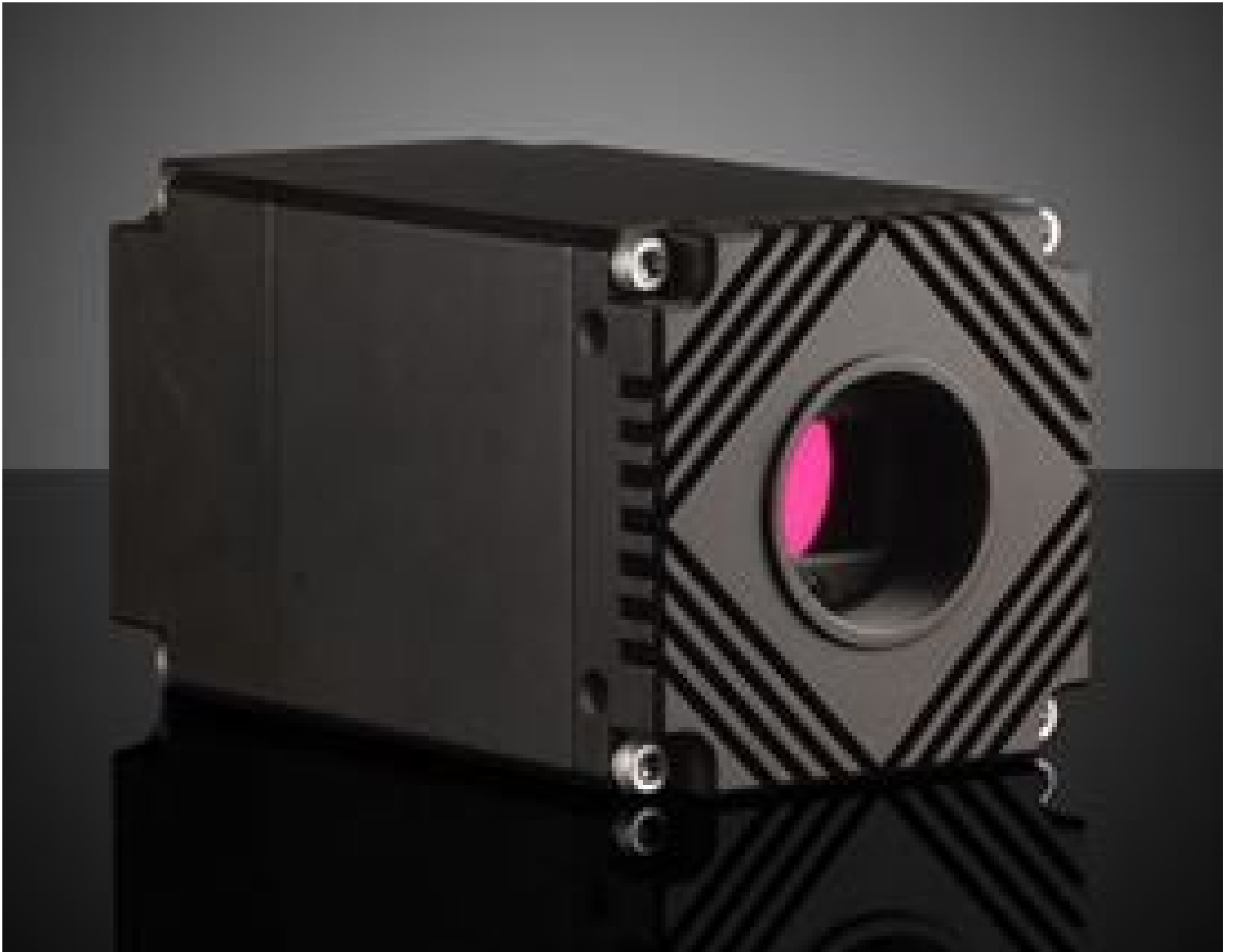


[See all 41 Products in Family](#)

LUCID Vision Labs Atlas10 ATX051S-MC, Sony IMX537, 5.0MP, Monochrome Camera

See More by [LUCID Vision Labs™](#)



LUCID Vision Labs Atlas10 10GigE Power over Ethernet (PoE) Cameras (Front, C-Mount)



Stock **#18-478** **1 In Stock**

- 1 + **\$\$2,667⁰⁰**

ADD TO CART

Volume Pricing	
Qty 1+	\$\$2,667.00 each
Need More?	Request Quote

Product Downloads

Spectrum:	
Monochrome	

General

Monochrome Camera	Type:
ATX051S-MC	Model Number:
	Manufacturer:

Camera Series:

Atlas 10

Physical & Mechanical Properties

Dimensions (mm):

55 x 55 x 95.5 (excludes connectors and lens mount)

Weight (g):

304

Housing:

Full

Sensor

Image Buffer:

380MB

Sensor Format:

1/1.8"

Resolution (Megapixels):

5.00

Frame Rate (fps):

205.00

Pixels (H x V):

2,448 x 2,048

Pixel Size, H x V (µm):

2.74 x 2.74

Sensing Area, H x V (mm):

6.71 x 5.61

Imaging Sensor:

Sony IMX537

Type of Sensor:

Progressive Scan CMOS

Shutter Type:

Global

Pixel Depth:

8/10/12 Bit

Exposure Time:

5.02µs - 10s

Machine Vision Standard:

GigE Vision v2.0

Electrical

Power Consumption (W):

11.5 (External Power Supply) <12 (PoE+)

Hardware & Interface Connectivity

Interface:

10GigE (PoE+)

Connector:

10GigE, M12

Power Supply:

Power Supply Required and Sold Separately.

USA: [#18-364](#)Europe: [#18-364](#)Japan: [#18-364](#)

Korea: Not Available

China: [#18-364](#)

GPIOs:

1 opto-isolated input, 1 opto-isolated output, 2 non-isolated bi-directional ports

Synchronization:

Hardware Trigger (GPIO), Software Trigger, or PTP (IEEE 1588)

Interface Port Orientation:

Back Panel

GPIO Connector Type:

8-pin MB

Threading & Mounting

Mount:

C-Mount

Mounting Threads:

2 x 1/4-20 with Tripod Mount Adapter [#17-120](#)

Environmental & Durability Factors

Operating Temperature (°C):

-20 to +55

Storage Temperature (°C):

-30 to +60

Regulatory Compliance

Certificate of Conformance:

[View](#)

Product Details

- 10GBASE-T (10GigE) Ethernet Interface with PoE+
- 5.0 to 65 Megapixel Sony 4th Gen Pregius S Sensors
- Compact 55 x 55mm Form Factor
- TFL-Mount Compatible with some [TECHSPEC® CA Series FFL Lenses](#)

LUCID Vision Labs Atlas10 10GigE Power over Ethernet (PoE) Cameras combine 4th generation Sony Pregius S sensors with 10GigE interface, delivering fast frame rates at high resolution and image quality in a compact and rugged housing. The 10GBASE-T Power over Ethernet PoE+ interface allows for data transfer speeds of up to 1.2 GB/s and can also provide power to the camera over one CAT6a cable up to 25m in length. The high bandwidth enables these cameras to run at high bit depths (10/12-bit) to maximize image quality while maintaining smooth frame rates. The back-illuminated CMOS sensors offer high sensitivity, high dynamic range, and low noise, and are actively aligned to the lens mount at the same optical axis to minimize performance discrepancies resulting from sensor tilt and rotation. LUCID Vision Labs Atlas10 10GigE Power over Ethernet (PoE) Cameras are GigE Vision compliant and feature rugged M12 Ethernet and M8 GPIO connectors, making them ideal choices for industrial, automotive, factory automation, process control, and other machine vision applications requiring high resolutions and bandwidth.

;