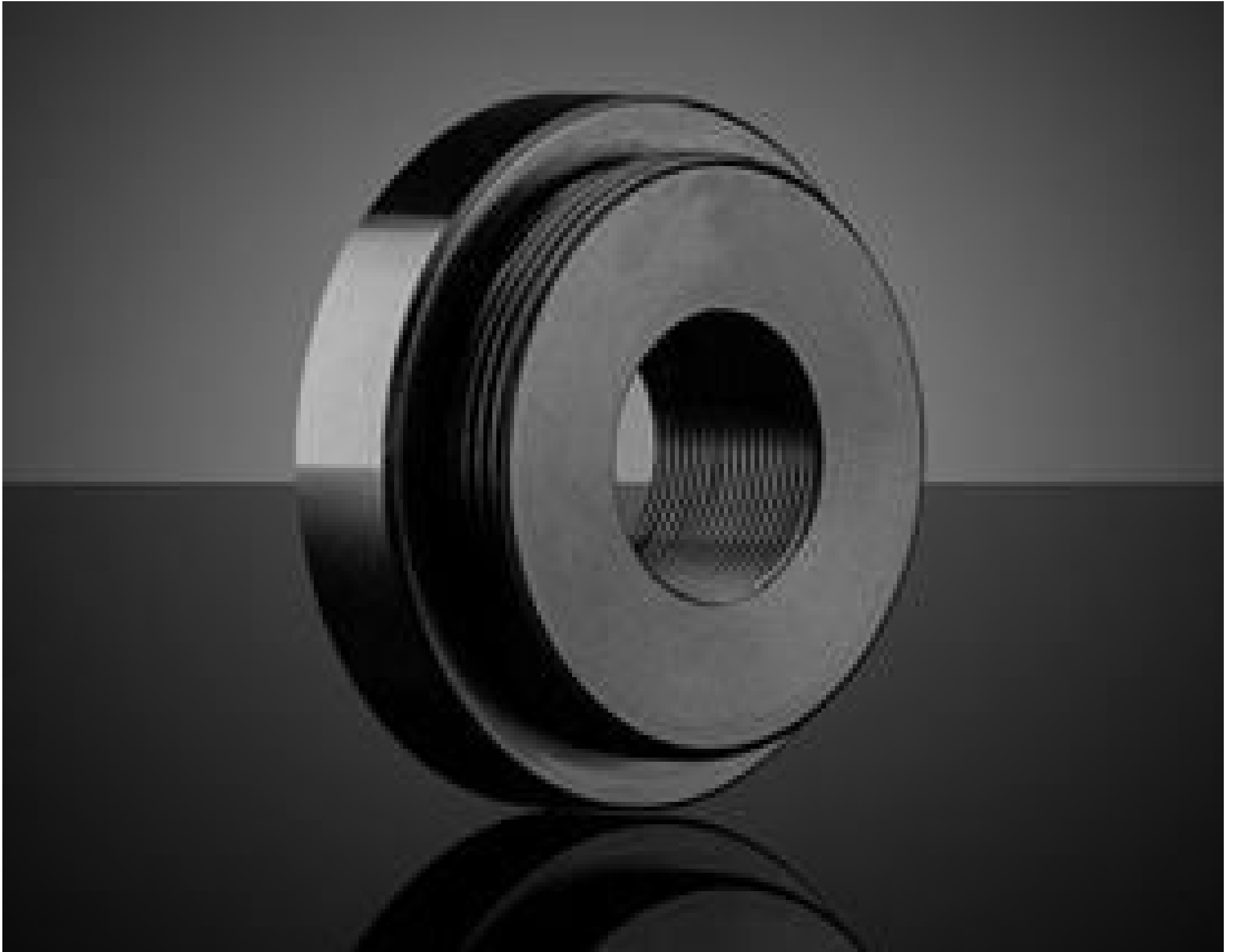


[See all 10 Products in Family](#)

**TECHSPEC® S-Mount Female to C-Mount Male Step-Down Adapter**



Female S to Male C Adapter, #63-945

Stock **#63-945** **20+ In Stock**

⊖ 1 ⊕ **S\$83<sup>00</sup>**

**ADD TO CART**

Volume Pricing	
Qty 1-4	<b>S\$83.30</b> each
Qty 5-9	<b>S\$74.20</b> each
Qty 10-25	<b>S\$68.60</b> each
Need More?	<a href="#">Request Quote</a>

Product Downloads

**General**

Thread Adapter **Type:**

Thread Adapter **Function:**

**Physical & Mechanical Properties**

6.0 **Extension Length (mm):**

10.0	<b>Total Length (mm):</b>
12.0	<b>Clear Aperture CA (mm):</b>
Black Anodized Aluminum (6061-T6)	<b>Construction:</b>
30.0	<b>Outer Diameter (mm):</b>

## Threading & Mounting

S-Mount to C-Mount	<b>Thread Type:</b>
Female to Male	<b>Thread Termination:</b>

## Regulatory Compliance

<a href="#">Compliant</a>	<b>RoHS 2015:</b>
<a href="#">View</a>	<b>Certificate of Conformance:</b>
<a href="#">Compliant</a>	<b>REACH 241:</b>

## Product Details

- Adapt All Available Tube System Thread Types to One Another
- Low Profile Design to Minimize Extension Length
- Black Anodized Aluminum Construction

TECHSPEC® C, S, and T-Mount Thread Adapters ensure that all [Tube System](#) thread types are compatible with one another. This includes C, S, and T-Mount threads, TECHSPEC Multi-Element Tube System threads (M29 x 0.75), ID1 (1.035" x 40 TPI, equivalent to SM1 thread specifications), and ID05 (0.535" x 40 TPI, equivalent to SMD5 thread specifications). All thread adapters have a low-profile design to minimize extension length. They also have a black anodized aluminum construction to ensure minimal reflections within a system. TECHSPEC C, S, and T-Mount Thread Adapters are ideal for system expansion and work with any optical component that uses the supported thread types.