

English Post Pivot Base



Stock #53-355 **20+ In Stock**

- 1 + \$32.20

ADD TO CART

Volume Pricing	
Qty 1-9	\$32.20 each
Qty 10+	\$28.84 each
Need More?	Request Quote

Product Downloads

General

English **Type:**

Includes 1/4-20 Cap Screws **Note:**

English Type (1/4-20) **Compatible Post Holder:**

Physical & Mechanical Properties

47.80 **Length (mm):**

19.10 **Width (mm):**

9.50 **Thickness (mm):**

Black Anodized Aluminum **Construction:**

Regulatory Compliance

[Compliant](#) **RoHS 2015:**

[Compliant](#) **Reach 224:**

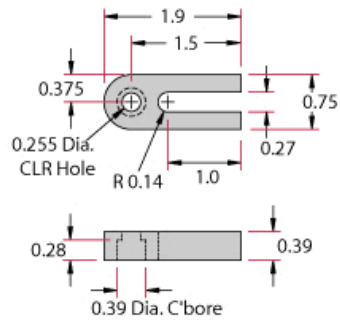
[View](#) **Certificate of Conformance:**

Product Details

- Slot Adjustment Range of 1.00"

The narrow slotted mounting base is used for the positioning of 0.5" dia. stainless steel posts and post holder assemblies. The post/post holder is attached to the base via a counterbored clearance hole with a 1/4-20 socket screw. The base is held in place with another socket screw in the slot. The slot length allows the post to be centered at the mid-point laterally or at 45° on a 1" center hole breadboard. Anodized aluminum.

Technical Information



Units: Inches