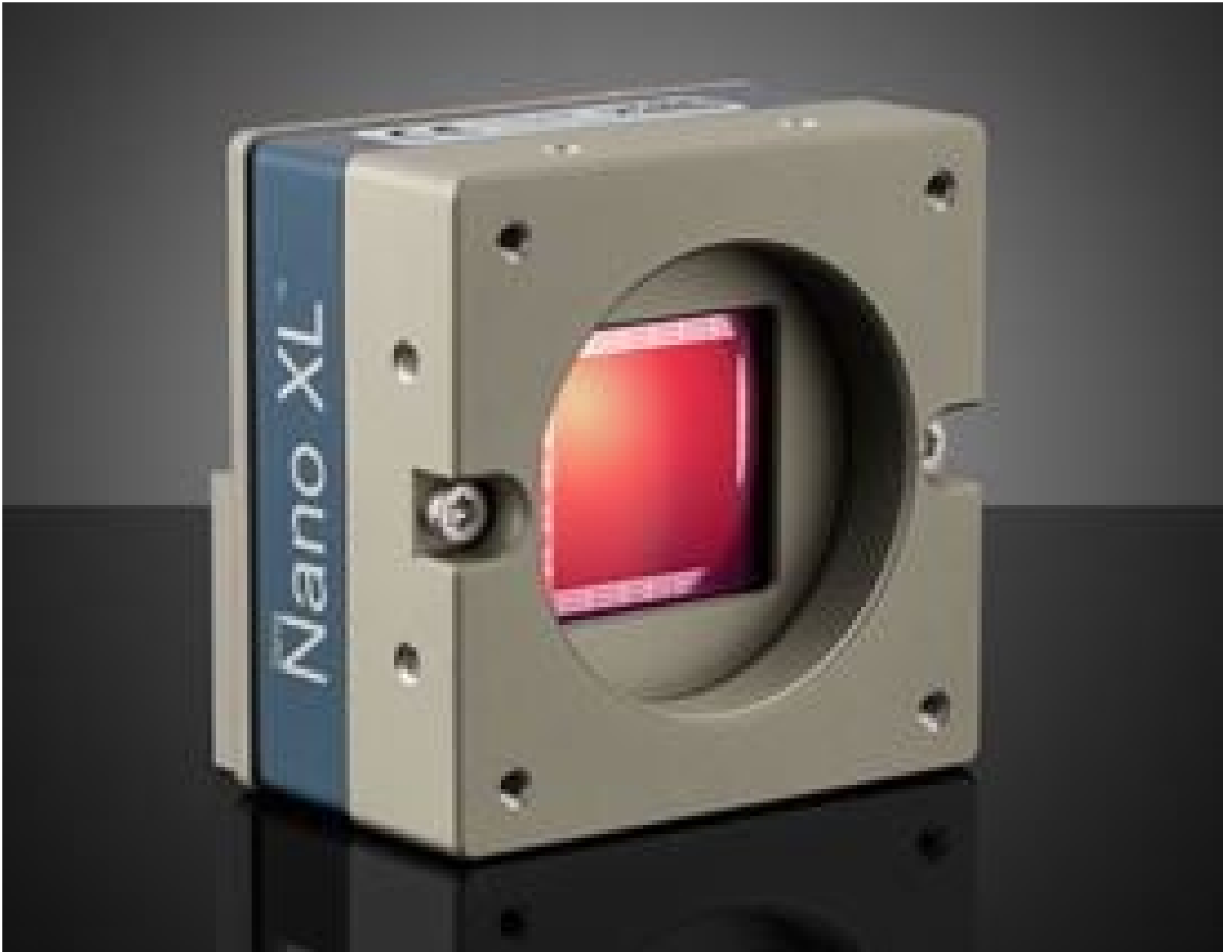


[See all 14 Products in Family](#)

C8205, APS-C Color, Teledyne DALSA Genie Nano 10GigE PoE Camera

See More by [Teledyne DALSA](#)



Teledyne DALSA Genie™ Nano 10GigE Cameras - Front



Stock **#28-679** **4 In Stock**

\$9,842.⁰⁰

ADD TO CART

Volume Pricing	
Qty 1+	\$9,842.00 each
Need More?	Request Quote

Product Downloads

Color Spectrum:

General

Color Camera Type:

G6-GC31-C8205 Model Number:

Manufacturer:

Teledyne DALSA

Camera Series:

Genie Nano-10GigE

Physical & Mechanical Properties

Dimensions (mm):

59 x 59 x 41 (excludes connectors and lens mount)

Weight (g):

183

Housing:

Full

Sensor

Sensor Format:

APS-C

Resolution (Megapixels):

67.10

Frame Rate (fps):

13.80

Pixels (H x V):

8,192 x 8,192

Pixel Size, H x V (µm):

2.50 x 2.50

Sensing Area, H x V (mm):

20.48 x 20.48

Imaging Sensor:

Teledyne e2v Emerald 67M

Type of Sensor:

Progressive Scan CMOS

Shutter Type:

Global

Pixel Depth:

8/10 bit

Exposure Time:

Automatic, Programmable, or via External Trigger

Dynamic Range (dB):

62.00

Machine Vision Standard:

GigE Vision v2.0

Electrical

Power Consumption (W):

12.5

Hardware & Interface Connectivity

Interface:

10GigE (PoE)

Connector:

5GigE, RJ45 with Screw Locks

GPIOs:

2 opto-isolated input, 3 opto-isolated output

Synchronization:

Hardware Trigger (GPIO) or Software Trigger

Interface Port Orientation:

Back Panel

GPIO Connector Type:

6-pin Hirose (HR10)

Threading & Mounting

Mount:

M42-Mbunt

Mounting Threads:

1/4-20 with Tripod Mount Adapter [#34-966](#)

Environmental & Durability Factors

Operating Temperature (°C):

-20 to +60

Storage Temperature (°C):

-30 to +60

Regulatory Compliance

RoHS 2015:

[Exempt](#)

Certificate of Conformance:

[View](#)

Product Details

- Up to 67.10 MP Resolution with Framrates up to 18.50FPS
- Supports Trigger-to-Image Reliability (T2IR) Framework
- Compact (44 x 59 x 59mm), M42-Mbunt, Lightweight, and Robust All Metal Design



Teledyne
Authorized
Distributor

Teledyne DALSA Genie™ Nano 10GigE Cameras are designed with the 10GBASE-T (10GigE) Ethernet Interface and can also run at ethernet link speeds of 1, 2.5, or 5GigE. These M42-mount cameras are available with either the Teledyne e2v Emerald 36M sensor featuring a 1.4" format or the Teledyne e2v Emerald 67M sensor which features an APS-C format. Genie™ Nano cameras support Sapera LT SDKs and 3rd Party GenICam compliant SDKs allowing for upgrading current systems without changing application software. Teledyne DALSA Genie™ Nano 10GigE Cameras support the Trigger-to-Image Reliability (T2IR) framework which is a combination of hardware and software features that work together at a system level to help improve the reliability and reduce the downtime of imaging systems. These cameras are ideal for applications involving Electronics Manufacturing Inspection, Intelligent Traffic Systems, and Aerial Imaging.

Sapera LT is a free image acquisition and control software development toolkit (SDK) for Teledyne DALSA'S 1D cameras / 2D cameras / 3D Laser Profiler cameras and frame grabbers. Hardware independent in nature, Sapera LT offers a rich development ecosystem for machine vision OEMs and system integrators. Sapera LT supports image acquisition from cameras and frame grabbers based on machine vision standards including GigE Vision™, CameraLink®, CameraLink HS™, CoaXpress®, and USB3 Vision™.

;