

[See all 8 Products in Family](#)

TECHSPEC® 90mm Dia x 849.9mm FL Achromatic Lens, Mtd



Stock #54-567 **10 In Stock**

⊖ 1 ⊕ **S\$952⁰⁰**

ADD TO CART

| Volume Pricing | |
|----------------|-------------------------------|
| Qty 1-5 | S\$952.00 each |
| Qty 6-25 | S\$812.00 each |
| Qty 26-49 | S\$763.00 each |
| Need More? | Request Quote |

Product Downloads

General

Achromatic Lens **Type:**

Physical & Mechanical Properties

90.00 +0.00/-0.08 **Diameter (mm):**

72.00 **Clear Aperture CA (mm):**

| | |
|---------------------------|------------------------------------|
| 5.00 | Centering (arcmin): |
| 13.08 | Center Thickness CT 1 (mm): |
| 10.16 | Center Thickness CT 2 (mm): |
| -1227.86 | Radius R₄ (mm): |
| 23.07 | Edge Thickness ET (mm): |
| Mounted, Airspaced 0.10mm | Construction: |
| Protective as needed | Bevel: |

Optical Properties

| | |
|--------------------------------------|--|
| 849.96 | Effective Focal Length EFL (mm): |
| ±1 | Focal Length Tolerance (%): |
| 838.69 | Back Focal Length BFL (mm): |
| 587.6 | Focal Length Specification Wavelength (nm): |
| 497.21 | Radius R₁ (mm): |
| -345.82 | Radius R₂ (mm): |
| -344.20 | Radius R₃ (mm): |
| N-BK7 / N-SF2 | Substrate: <input type="checkbox"/> |
| 60-40 | Surface Quality: |
| 11.1 | f#: |
| 0.05 | Numerical Aperture NA: |
| MgF ₂ (400-700nm) | Coating: |
| R _{avg} ≤1.75% @400 - 700nm | Coating Specification: |
| 400 - 700 | Wavelength Range (nm): |

Threading & Mounting

| | |
|-----------|------------------------------|
| 28.07 | Mount Thickness (mm): |
| M86 x 1.0 | Mounting Threads: |

Regulatory Compliance

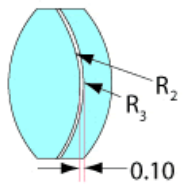
| | |
|---------------------------|------------------------------------|
| Compliant | RoHS 2015: |
| View | Certificate of Conformance: |
| Compliant | REACH 241: |

Product Details

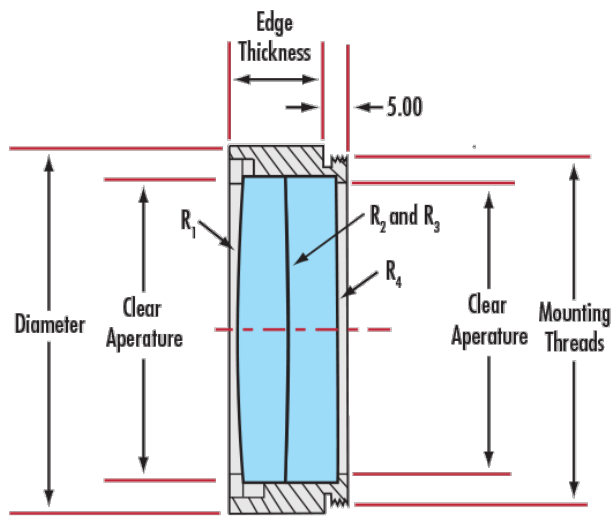
- Offered in Cemented or Air-Spaced Designs
- Mounted Versions Available for Easy Integration
- Feature MgF₂ Anti-Reflection Coating

TECHSPEC® Large Precision Achromatic Lenses offer near-diffraction limited performance across the designated wavelength range. These color-corrected achromatic lenses feature long focal lengths and are available in either cemented or air-spaced designs. The lenses have a MgF₂ anti-reflection coating and are available in diameters up to 140mm. TECHSPEC® Large Precision Achromatic Lenses, in the mounted version, feature a male mounting thread for easy integration into optical systems. Adhesive foil spacers and mounting instructions are included for unmounted, air-spaced achromatic lenses.

Technical Information



Airspaced



Coating Curves