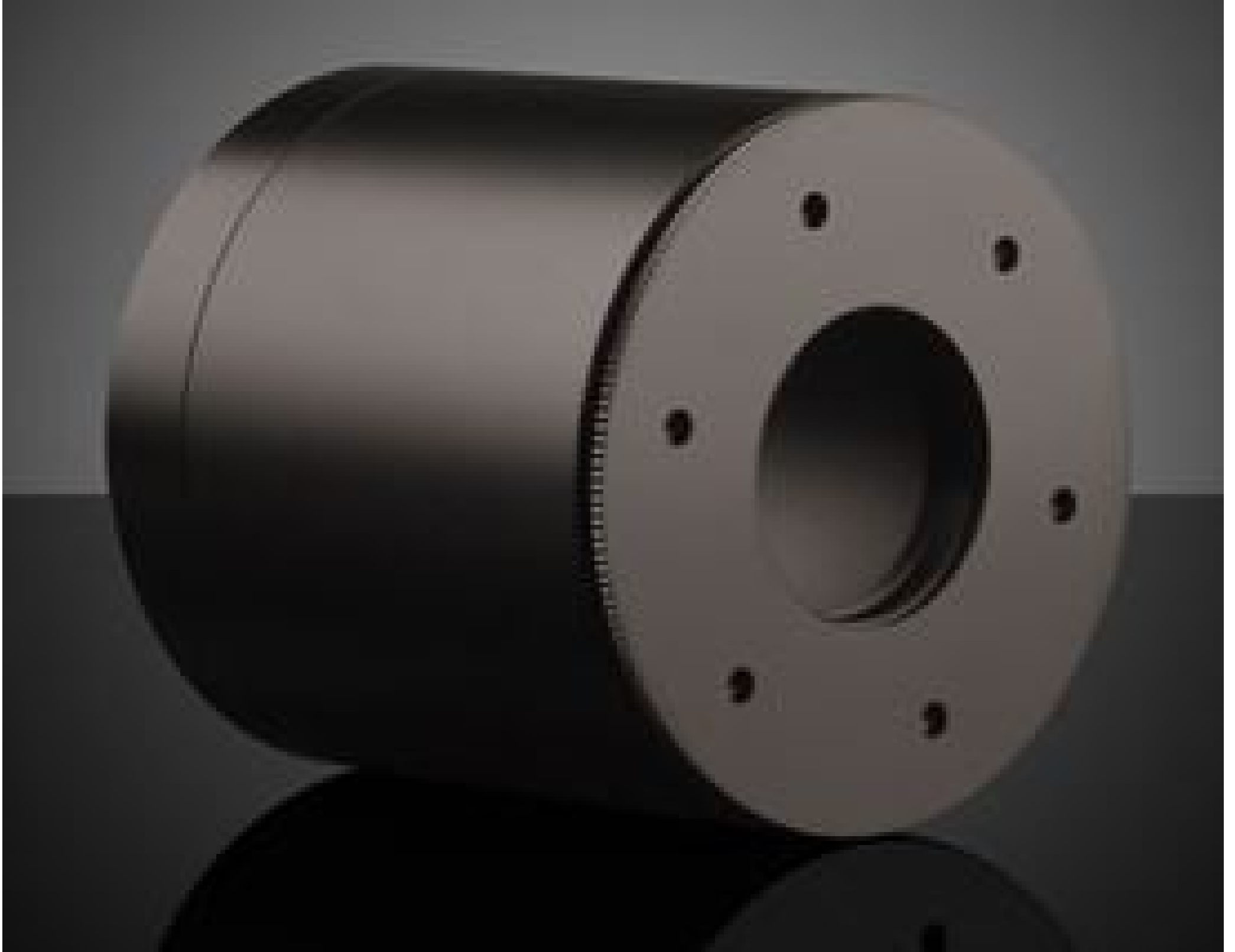


[See all 68 Products in Family](#)

59mm ID, 71.5mm Inner Length, IP67 Lens Tube

See More by [LUCID Vision Labs™](#)



59mm ID, IP67 Lens Tube



Stock **#17-080** **2 In Stock**

S\$527⁰⁰

ADD TO CART

Volume Pricing	
Qty 1+	S\$527.80 each
Need More?	Request Quote

Product Downloads

General

Camera Accessory **Type:**

IPTC-D590L715 **Model Number:**

71.5 **Inner Length (mm):**

Note:

Compatible with Lucid Vision Labs Triton™ camera models. Includes 1 x Lens Tube and 1 x Attachment Ring.

Physical & Mechanical Properties

82.0 **Length (mm):**

68 **Outer Diameter (mm):**

59 **Inner Diameter (mm):**

Sensor

Global **Shutter Type:**

Regulatory Compliance

[View](#) **Certificate of Conformance:**

Product Details

- Compact 29 x 29 x 45mm Form Factor
- Global, Rolling, or Polarized CMOS Sensors
- IP67 Protection with Optional Lens Tubes

LUCID Vision Labs Triton™ GigE Power over Ethernet (PoE) Cameras provide exceptional price performance in a compact 29 x 29mm form factor. These cameras are available with Sony's Pregius™ and Starvis™ imaging sensors with up to 24.5 megapixels of resolution, as well as Sony's polarized sensor. Each imaging sensor is actively aligned during manufacturing, ensuring sharp and crisp images even in the corners. Using the accessory IP67 lens tubes (sold separately), LUCID Vision Labs Triton GigE Power over Ethernet (PoE) Cameras can operate in harsh environments where dust or water are present up to IP67 thresholds. Triton cameras are ideal for automotive, process control, and food and beverage applications.