

## 40mm Sq., Fixed Filter Holder



40mm Sq., Fixed Filter Holder

Stock #54-997 **20+ In Stock**

⊖ 1 ⊕ **\$130<sup>00</sup>**

**ADD TO CART**

### Volume Pricing

Qty 1-9	<b>\$130.90</b> each
Qty 10-25	<b>\$118.58</b> each
Qty 26-49	<b>\$109.34</b> each
Need More?	<a href="#">Request Quote</a>

### Product Downloads

### General

Fixed **Type:**  
Square or Rectangular **Type of Optics:**

### Physical & Mechanical Properties

Black Anodized Aluminum **Construction:**

Max. Thickness of Compatible Optics (mm):  
8.5

Base Width (mm):  
70.0

Base Thickness (mm):  
16.0

## Threading & Mounting

Size of Compatible Optics (mm):  
40.0 - 101.6

Compatible Post:  
M6 x 1.0

## Regulatory Compliance

RoHS 2015:  
[Exempt](#)

Certificate of Conformance:  
[View](#)

Reach 247:  
[Contains SVHC\(s\)](#)

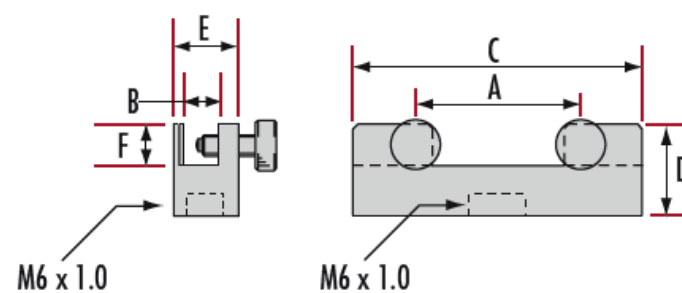
## Product Details

- Non-Marring Surface
- 3 Sizes Available
- M6 x 1.0 mounting hole
- Black Anodized Aluminum
- [Posts](#) and [Post Holders](#) Required for Mounting

Fixed Filter Mounts are ideal for a variety of filter sizes, as well as for mirrors, beamsplitters, etc. The low-profile design ensures limited obstruction of the aperture. The mounts feature a non-marring surface with a M6 x 1.0 mounting hole. Fixed Filter Mounts are constructed of black anodized aluminum and are available in 3 sizes: 15mm Sq., 40mm Sq., and 80mm Sq. [Posts](#) and [Post Holders](#) are required for mounting to a breadboard.

## Technical Information

A	B	C	D	E	F	Stock No.
15	5	30	15	10	5	<a href="#">#54-996</a>
40	8.5	70	22	16	10	<a href="#">#54-997</a>
80	18	140	30	30	15	<a href="#">#54-998</a>



Units: mm