

[See all 6 Products in Family](#)

40mm Dia. x 200mm FL, MgF₂ Coated, DCX N-K5 Lens



Stock #32-911 CLEARANCE **20+ In Stock**

[Other Coating Options](#)

S\$32^{.55}

ADD TO CART

Volume Pricing

Qty 1+	S\$32.55 each
Need More?	Request Quote

Product Downloads

General

Double-Convex Lens Type:

Physical & Mechanical Properties

40.00 +0.00/-0.10 Diameter (mm):

<1 Centering (arcmin):

8.00 ±0.10 Center Thickness CT (mm):

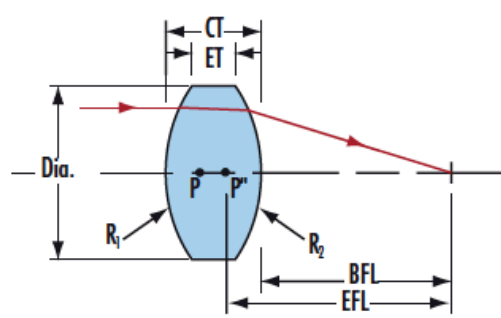
6.07	Edge Thickness ET (mm):
39	Clear Aperture CA (mm):
Protective as needed	Bevel:
Optical Properties	
200.00 @ 587.6nm	Effective Focal Length EFL (mm):
197.36	Back Focal Length BFL (mm):
MgF ₂ (400-700nm)	Coating:
R _{avg} ≤ 1.75% @ 400 - 700nm	Coating Specification:
N-K5	Substrate: <input type="checkbox"/>
40-20	Surface Quality:
1.5λ	Power (P-V) @ 632.8nm:
λ/4	Irregularity (P-V) @ 632.8nm:
±1	Focal Length Tolerance (%):
5.00	f#:
0.10	Numerical Aperture NA:
400 - 700	Wavelength Range (nm):
10 J/cm ² @ 532nm, 10ns	Damage Threshold, By Design: <input type="checkbox"/>

Regulatory Compliance	
Compliant	Reach 224:
View	Certificate of Conformance:

Product Details

- N-K5 Substrate
 - Various Anti-Reflection (AR) Coatings
 - PCX and DCX Options Available
- N-K5 Lenses are available in various diameters, focal lengths, as well as Plano-Convex and Double-Convex form factors. Anti-reflective coatings covering the VIS to NIR make these ideal for multiple applications.

Technical Information



Coating Curves

Compatible Mounts

