

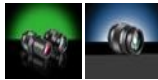
[See all 7 Products in Family](#)

## 3X Mitutoyo Telecentric Objective

See More by [Mitutoyo](#)



3X (#56-985) & 5X (#56-986)



Stock **#56-985** **4 In Stock**

S\$2,051<sup>00</sup>

**ADD TO CART**

Volume Pricing	
Qty 1+	S\$2,051.00 each
Need More?	<a href="#">Request Quote</a>

Product Downloads

**General**

375-037-1	<b>Model Number:</b>
Microscope Objective	<b>Type:</b>
Finite Conjugate	<b>Style:</b>
	<b>Manufacturer:</b>

**Note:**

Image is formed 280mm from specimen (170mm from the mounting flange)

**Physical & Mechanical Properties**

33.00 **Length (mm):**

33.00 **Length excluding Threads (mm):**

30 **Maximum Diameter (mm):**

55 **Weight (g):**

**Optical Properties**

2.10mm **Horizontal Field of View, 1/2" Sensor:**

2.90mm **Horizontal Field of View, 2/3" Sensor:**

58.51 **Focal Length FL (mm):**

NA0.09 **Aperture (f/#):**

3X **Magnification:**

0.09 **Numerical Aperture NA:**

3.06 **Resolving Power (μm):**

34.00 **Depth of Field (μm):**

8 **Field of View, 24 Diameter Field Eyepiece (mm):**

6 **Field of View, 18 Diameter Field Eyepiece (mm):**

77 **Working Distance (mm):**

435 - 655 **Wavelength Range (nm):**

110 **Parfocal Length (mm):**

N/A **Immersion Liquid:**

11.00 **Maximum Image Circle (mm):**

**Sensor**

2/3" **Maximum Sensor Format:**

**Threading & Mounting**

M26 x 36 TPI **Mount:**

M26 x 36 TPI **Mounting Threads:**

**Environmental & Durability Factors**

+5 to +40 **Operating Temperature (°C):**

20 - 80% **Operating Humidity:**

**Regulatory Compliance**

[Exempt](#) **RoHS 2015:**

[View](#) **Certificate of Conformance:**

[Contains SVHC\(s\)](#) **REACH 241:**

**Product Details**

- Long Working Distances Allow for Integration into Machine Vision Measurement Systems
- Compact Design and Long Parfocal Length Simplifies Mounting
- [Tube](#) Available for Use with C-Mount Cameras
- Aluminum Alloy Housing

Mitutoyo Telecentric Objectives are ideal for high-resolution, high power machine vision measurement and optical gauging systems. With powers up to 100X, these objectives can be used for semiconductor production and inspection, and in metrology, quality assurance, and R&D laboratories. These objectives are constructed of an aluminum alloy housing. Mitutoyo Telecentric Objectives have a compact design and a long parfocal length that simplifies mounting. They are easily integrated into C-Mount imaging systems with our Mitutoyo C-Mount Camera Tube [#56-992](#).

Edmund Optics is the main source for Mitutoyo Objectives. Place your orders now for these in demand quality products.

## Technical Information

Magnification	A	B	C	D	E	Stock No.
1X	49	10	16.5	31.5	31.5	<a href="#">#56-984</a>
3X	33	10	18	25	28	<a href="#">#56-985</a>
5X	49	10	17	25	28	<a href="#">#56-986</a>
10X	59	10	14.5	30	30	<a href="#">#56-987</a>
20X	90	14.5	23	33	39	<a href="#">#87-228</a>
50X	97	14.7	23	33	39	<a href="#">#87-229</a>
100X	104	14.1	23	33	39	<a href="#">#87-230</a>

