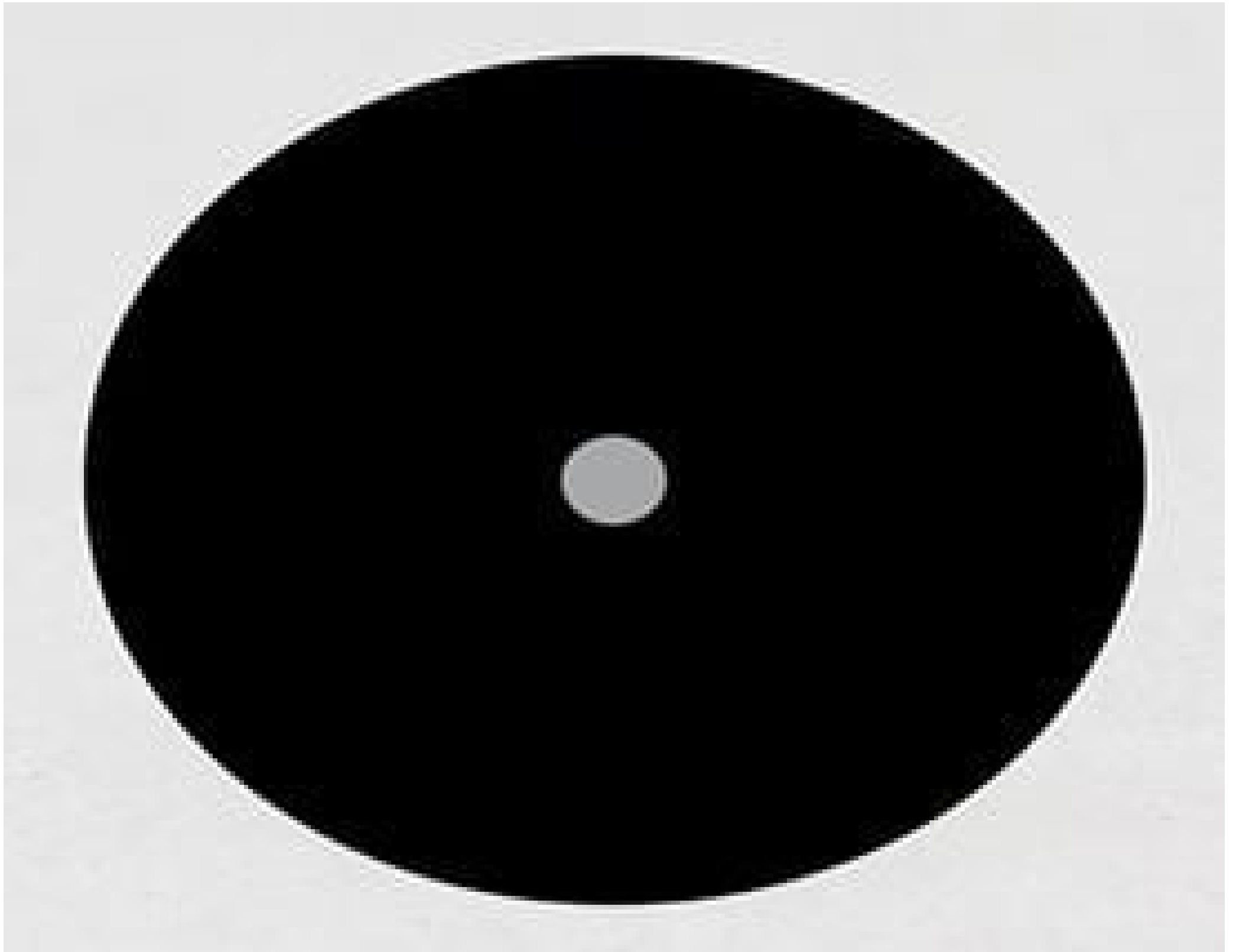


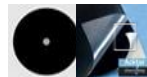
[See all 35 Products in Family](#)

## 300µm Aperture Diameter, Unmounted, Acktar Blackened Pinhole

See More by [Acktar](#)



Acktar Blackened Pinholes (unmounted)



Stock #15-390 **2 In Stock**

⊖ 1 ⊕ **S\$253<sup>00</sup>**

**ADD TO CART**

### Volume Pricing

Qty 1-9	<b>S\$253.40</b> each
Qty 10+	<b>S\$228.06</b> each
Need More?	<a href="#">Request Quote</a>

### Product Downloads

#### General

Unmounted **Type:**

PA-1-2-300 **Model Number:**

#### Physical & Mechanical Properties

9.53 ±0.1 **Outer Diameter (mm):**

Stainless Steel **Construction:**

300 ±3 **Fixed Aperture Diameter (µm):**

17 nominal **Thickness (µm):**

## Optical Properties

Magic Black™ **Coating:**

## Material Properties

99 **Absorbance (%):**

## Regulatory Compliance

**Compliant** **RoHS 2015:**

**View** **Certificate of Conformance:**

**Compliant** **Reach 247:**

## Need different specs or modifications?

Edmund Optics offers comprehensive custom manufacturing services for optical and imaging components tailored to your specific application requirements. Whether in the prototyping phase or preparing for full-scale production, we provide flexible solutions to meet your needs. Our experienced engineers are here to assist—from concept to completion.

Our capabilities include:

- Custom dimensions, materials, coatings, and more
- High-precision surface quality and flatness
- Tight tolerances and complex geometries
- Scalable production—from prototype to volume

Learn more about our [custom manufacturing capabilities](#) or submit an inquiry [here](#).

## Product Details

- Low Reflectance from the EUV to SWIR
- 99% Absorbance Blackening Coating
- Aperture Sizes from 20 to 1000µm
- Available Unmounted and Mounted

Acktar Blackened Pinholes feature Acktar Magic Black™ blackening coating that provides wide-band low reflectance from the extreme ultraviolet (EUV) to the short-wave infrared (SWIR). This coating provides near zero outgassing and can be used in temperatures up to 380°C. Acktar Blackened Pinholes are coated on both sides, including the pinhole edge, and are available either unmounted or mounted in a 25mm mount for easy integration into optical systems. These stainless steel substrate pinholes are ideal for spatial filtering applications requiring low back reflection and scattering from light sources.

Note: Please [contact us](#) for custom aperture options.