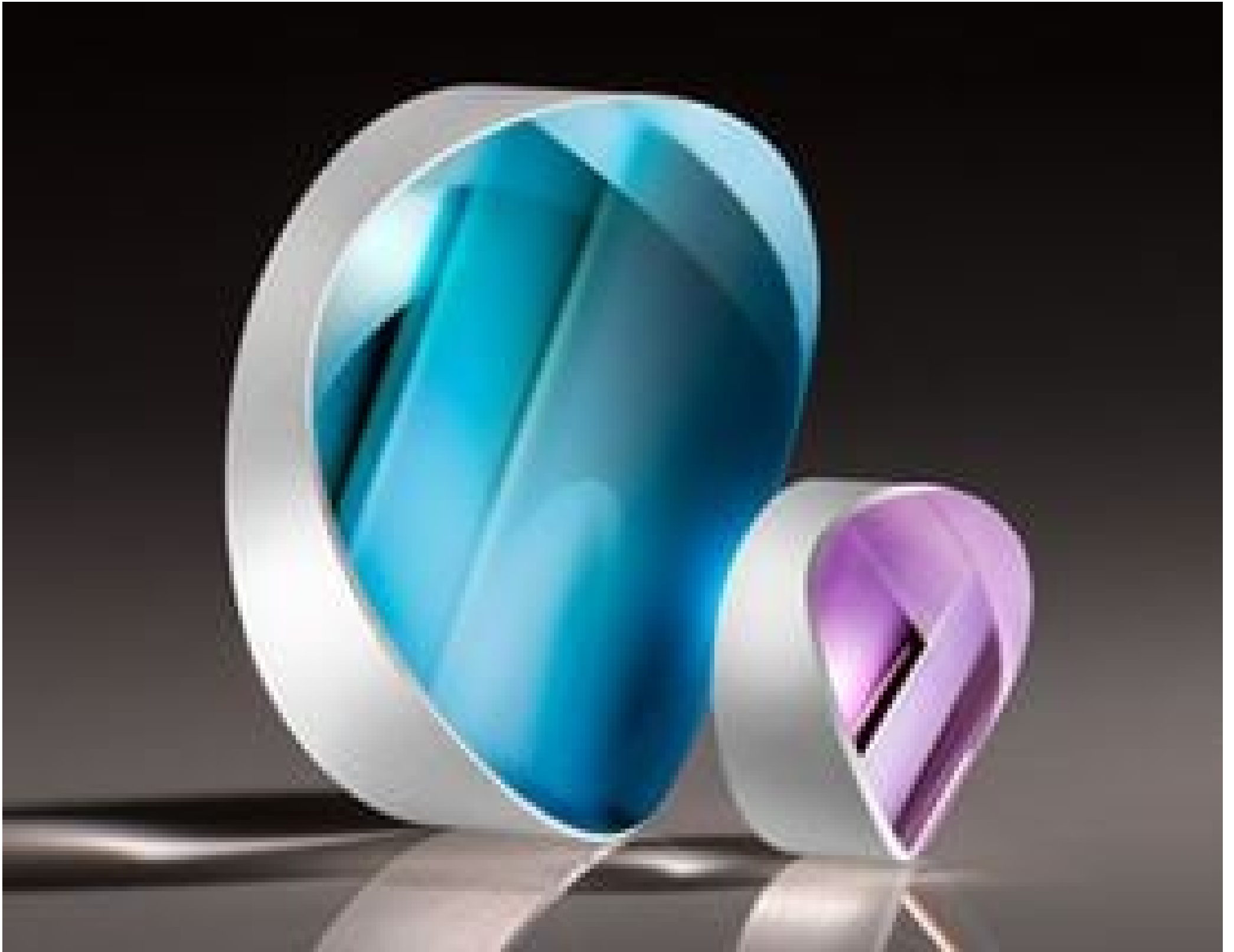


**TECHSPEC® 25mm Dia x 20mm FL Acylinder Lens, MgF<sub>2</sub> Coated**



TECHSPEC Acylinder Lenses

Stock **#86-036** [CONTACT US](#)

⊖ 1 ⊕ **S\$1,360<sup>00</sup>**

**ADD TO CART**

Volume Pricing	
Qty 1-5	<b>S\$1,360.80</b> each
Qty 6-25	<b>S\$1,085.00</b> each
Qty 26-49	<b>S\$1,001.00</b> each
Need More?	<a href="#">Request Quote</a>

Product Downloads

**SPECIFICATIONS**

**General**

Acyylinder Lens **Type:**

**Physical & Mechanical Properties**

25.00 +0.0/-0.1	Diameter (mm):
9.00	Center Thickness CT (mm):
±0.1	Center Thickness Tolerance (mm):
90.00	Clear Aperture (%):
2.6	Edge Thickness ET (mm):

### Optical Properties

20.00	Effective Focal Length EFL (mm):
<a href="#">N-SF5</a>	Substrate: <input type="text"/>
0.8	f#:
0.63	Numerical Aperture NA:
MgF <sub>2</sub> (400-700nm)	Coating:
400 - 700	Wavelength Range (nm):
14.6	Back Focal Length BFL (mm):
R <sub>avg</sub> ≤ 1.75% @ 400 - 700nm	Coating Specification:
587.6	Focal Length Specification Wavelength (nm):
1.0	Surface Accuracy, RMS (μm):
60-40	Surface Quality:

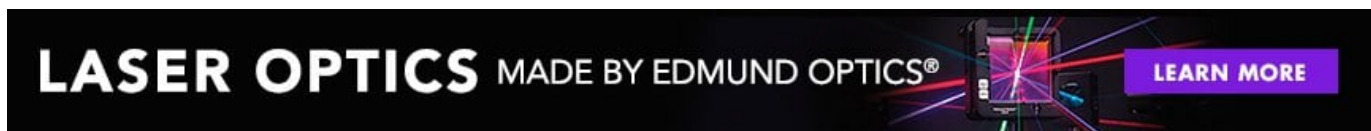
### Regulatory Compliance

<a href="#">Compliant</a>	RoHS 2015:
<a href="#">View</a>	Certificate of Conformance:
<a href="#">Compliant</a>	Reach 235:

## PRODUCT DETAILS

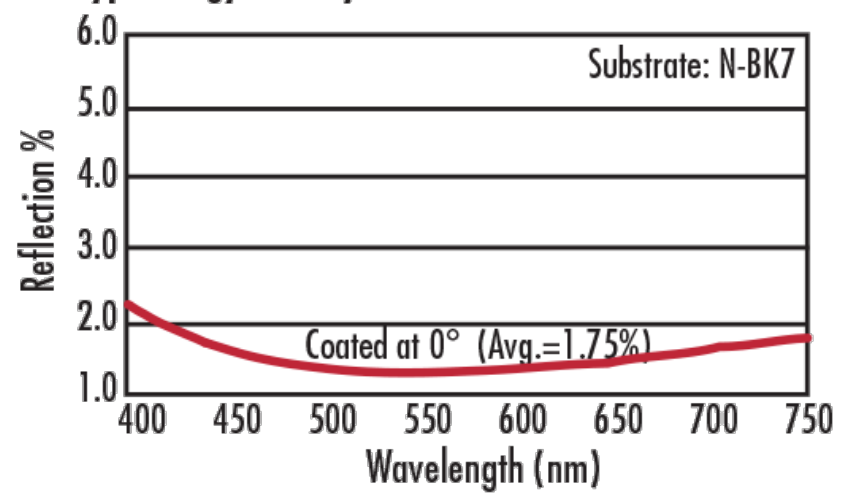
- Diffraction Limited Design
- Ideal for Creating Thin Line Profiles of Monochromatic Light Sources
- Focus Light in Single Dimension

TECHSPEC® Acylinder Lenses are similar to aspheric lenses in that they provide diffraction-limited focusing performance in only one dimension. By reducing spherical aberration along the focusing axis, TECHSPEC® Acylinder Lenses are ideal for creating thin line profiles. Compared to standard cylinder lenses, TECHSPEC® Acylinder Lenses also dramatically reduce the spot size of monochromatic light sources to provide sharp, thin lines.



## TECHNICAL INFORMATION

**MgF<sub>2</sub> Coating**  
**R<sub>avg</sub> ≤ 1.75% @ 400 - 700nm**  
**Typ. Energy Density Limit: 10 J/cm<sup>2</sup> @ 532nm, 10ns**



**COATING CURVES**