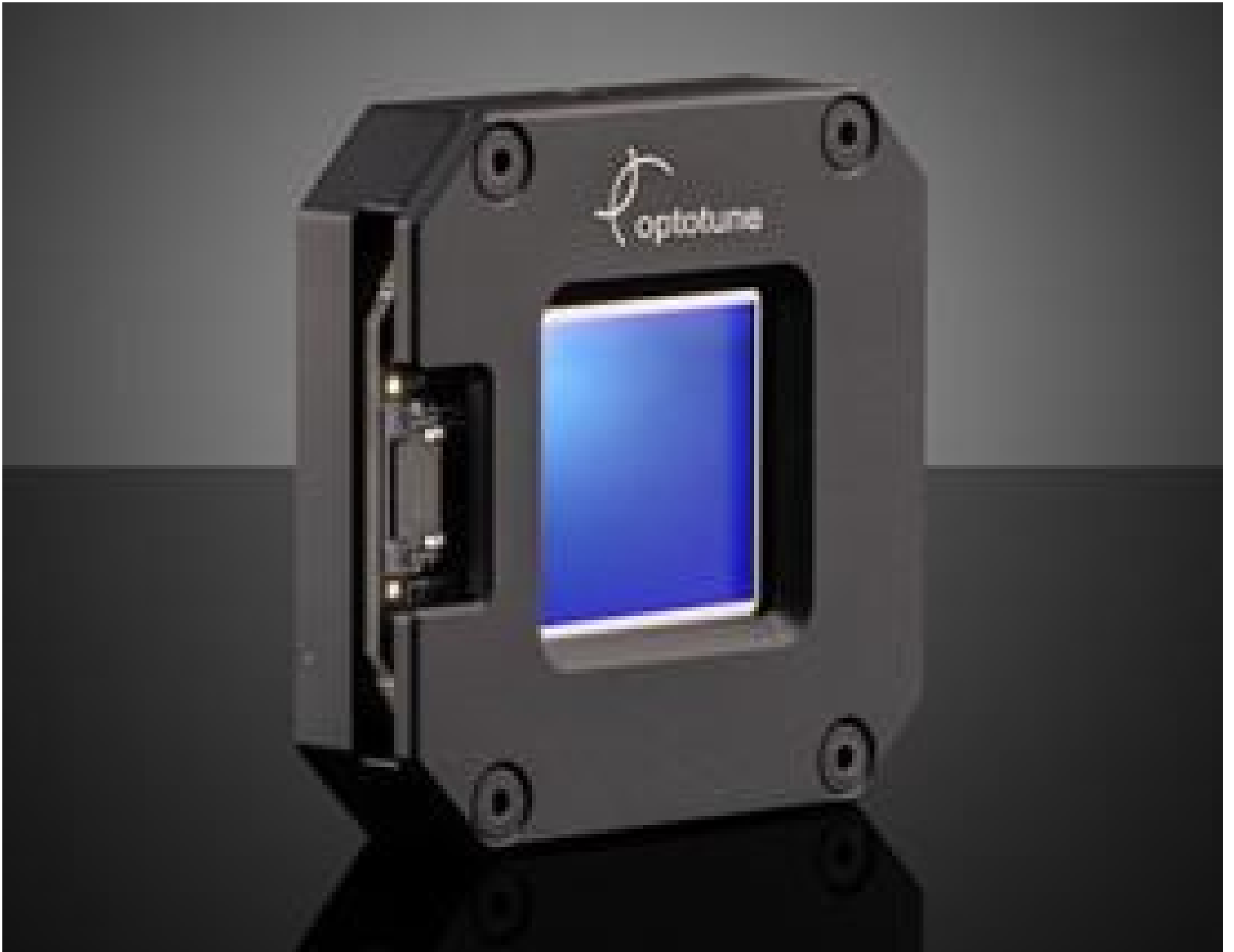


[See all 4 Products in Family](#)

## 20mm Optotune Beam Shifter

See More by [Optotune](#)



Optotune Beam Shifters



Stock #23-851 **1 In Stock**

- 1 + S\$1,412.<sup>00</sup>

**ADD TO CART**

Volume Pricing	
Qty 1+	S\$1,412.00 each
Need More?	<a href="#">Request Quote</a>

### Product Downloads

#### General

Rise Time (ms):  
1.3 (typical)

Settling Time (ms):  
4 (typical)

#### Physical & Mechanical Properties

Dimensions (mm):  
50.8 x 50.8 x 12

53

Weight (g):

## Optical Properties

BBAR (400-680nm)

Coating:

0.4 (in x and y)

Scan Angle (°):

400 - 680

Wavelength Range (nm):

>98% @ 400 - 680nm (0-34° AOI)

Transmission (%):

<80nm

Transmitted Wavefront Error, RMS:

## Hardware & Interface Connectivity

6-pin FPC

Connector:

## Regulatory Compliance

[View](#)

Certificate of Conformance:

## Product Details

- Increase Resolution up to 4X with High Angular Position Accuracy
- Fast Transition Times with Light-Weight and Compact Design
- Optotune ICC-4C-2000 Controller Required ([#23-717](#))

Optotune Beam Shifters accurately tilt a glass window in two axes, resulting in a lateral shift of light which facilitates a resolution increase up to 4X. Utilizing pixel shifting these windows make it possible to capture the full sensor resolution for each color channel by shifting an image a full pixel in X and Y. These windows are mounted in a compact aluminum bracket for easy integration into space constrained systems. Optotune Beam Shifters have an EEPROM containing calibration data for precise open-loop control and include a flex cable for quick connection with the Optotune ICC-4C-2000 controller, [#23-717](#), sold separately. In addition to camera and projection systems, these windows are ideal for non-imaging applications such as optical fiber-coupling, 3D printing, and metrology.