

[See all 7 Products in Family](#)

20mm Max. Aperture, Burnished Steel Leaves, Lockable Iris Diaphragm

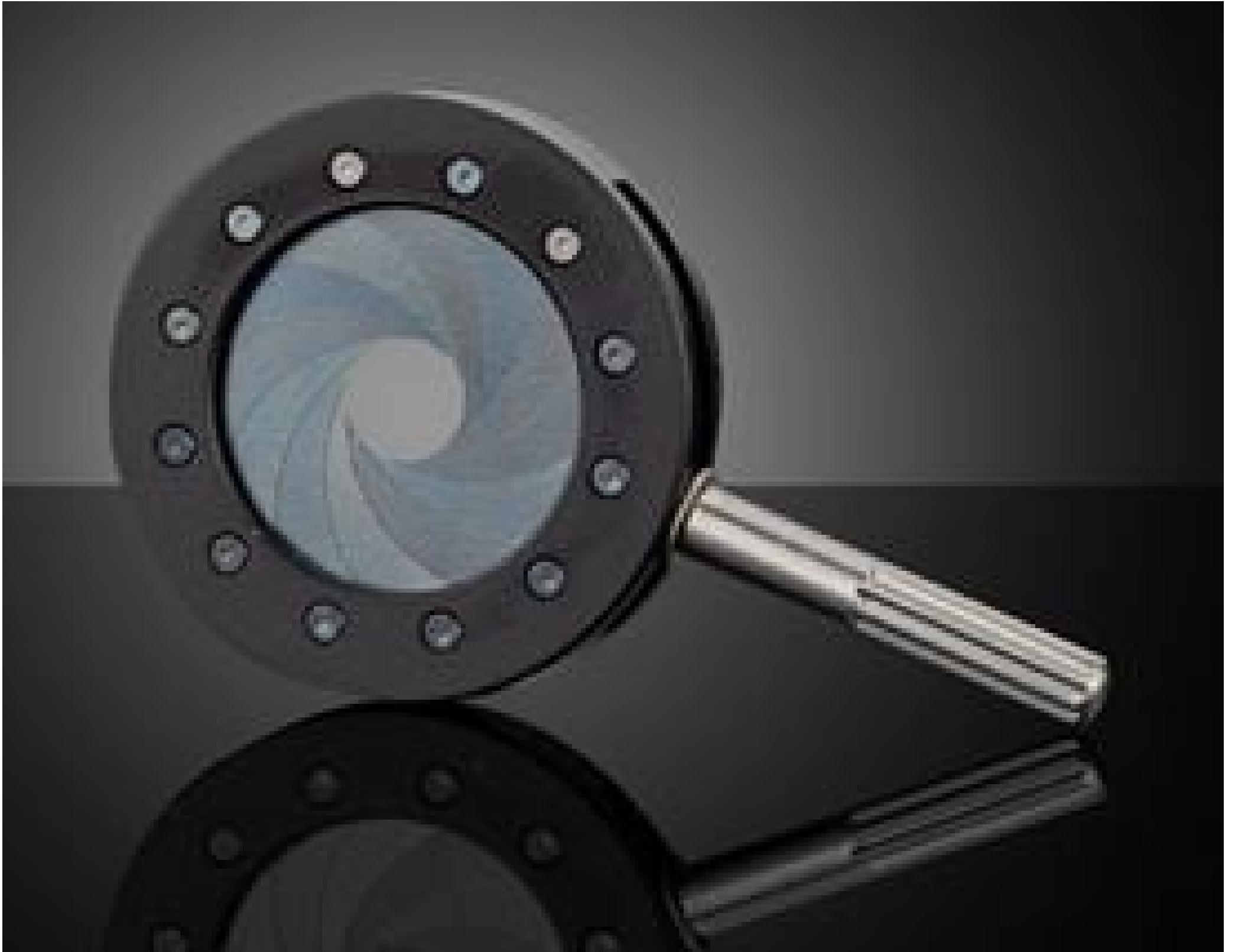


Photo shows part #29887



Stock **#29-888** **4 In Stock**

⊖ 1 ⊕ S\$154⁰⁰

ADD TO CART

Volume Pricing	
Qty 1+	S\$154.00 each
Need More?	Request Quote

Product Downloads

General

Unmounted **Type:**

Physical & Mechanical Properties

20.0 **Maximum Aperture (mm):**

30.0 **Outer Diameter (mm):**

Construction:
Anodized Aluminum Alloy, Burnished Spring Steel
Leaves

Lever Diameter (mm):
3.00

Lever Length (mm):
13.00

Number of Leaves:
12.00

Thickness (mm):
5.50

Optical Properties

Minimum Aperture (mm):
1.2 Typical

Regulatory Compliance

RoHS 2015:
[Compliant](#)

Certificate of Conformance:
[View](#)

Reach 247:
[Compliant](#)

Product Details

- Irises Lock in Place Providing Resistance to Shock and Vibrations
- Corrosion and High Temperature Resistance Housing
- Anti-Reflective (AR) Burnished Spring Steel Leaves

Lockable High Performance Iris Diaphragms provide resistance to shock and vibration via a lever that securely locks the aperture into place. Utilizing high-quality materials combined with the highest fabrication standards, these diaphragms guarantee optimum performance and reliability under harsh environmental conditions. These diaphragms are available in common diameters ranging from 12 to 53mm and feature maximum apertures up to 37mm with minimum apertures as small as 0.5mm. Lockable High Performance Iris Diaphragms are constructed of a corrosion-resistant, matte finish, black anodized aluminum alloy.

For specific OEM application assistance, please contact our Applications Engineering Department.

Note: Iris Diaphragm Mounts sold separately.