

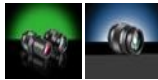
[See all 7 Products in Family](#)

# 1X Mitutoyo Telecentric Objective

See More by [Mitutoyo](#)



3X (#56-985) & 5X (#56-986)



Stock **#56-984** **2 In Stock**

S\$3,780<sup>00</sup>

**ADD TO CART**

Volume Pricing	
Qty 1+	S\$3,780.00 each
Need More?	<a href="#">Request Quote</a>

## Product Downloads

### General

375-036-2 **Model Number:**

Microscope Objective **Type:**

Finite Conjugate **Style:**

**Manufacturer:**

Mitutoyo

**Note:**

Image is formed 280mm from specimen (170mm from the mounting flange)

### Physical & Mechanical Properties

Length (mm):

49.00

Length excluding Threads (mm):

49.00

Maximum Diameter (mm):

30

Weight (g):

80

### Optical Properties

Horizontal Field of View, 1/2" Sensor:

6.40mm

Horizontal Field of View, 2/3" Sensor:

8.80mm

Focal Length FL (mm):

175.08

Aperture (f/#):

NA0.03

Magnification:

1X

Numerical Aperture NA:

0.03

Resolving Power (µm):

9.2

Depth of Field (µm):

306.00

Field of View, 24 Diameter Field Eyepiece (mm):

24

Field of View, 18 Diameter Field Eyepiece (mm):

18

Working Distance (mm):

61

Wavelength Range (nm):

435 - 655

Parfocal Length (mm):

110

Immersion Liquid:

N/A

Maximum Image Circle (mm):

11.00

### Sensor

Maximum Sensor Format:

2/3"

### Threading & Mounting

Mount:

M26 x 36 TPI

Mounting Threads:

M26 x 36 TPI

### Environmental & Durability Factors

Operating Temperature (°C):

+5 to +40

Operating Humidity:

20 - 80%

### Regulatory Compliance

RoHS 2015:

[Exempt](#)

Certificate of Conformance:

[View](#)

REACH 241:

[Contains SVHC\(s\)](#)

## Product Details

- Long Working Distances Allow for Integration into Machine Vision Measurement Systems
- Compact Design and Long Parfocal Length Simplifies Mounting
- [Tube](#) Available for Use with C-Mount Cameras
- Aluminum Alloy Housing

Mitutoyo Telecentric Objectives are ideal for high-resolution, high power machine vision measurement and optical gauging systems. With powers up to 100X, these objectives can be used for semiconductor production and inspection, and in metrology, quality assurance, and R&D laboratories. These objectives are constructed of an aluminum alloy housing. Mitutoyo Telecentric Objectives have a compact design and a long parfocal length that simplifies mounting. They are easily integrated into C-Mount imaging systems with our Mitutoyo C-Mount Camera Tube [#56-992](#).

Edmund Optics is the main source for Mitutoyo Objectives. Place your orders now for these in demand quality products.

## Technical Information

Magnification	A	B	C	D	E	Stock No.
1X	49	10	16.5	31.5	31.5	<a href="#">#56-984</a>
3X	33	10	18	25	28	<a href="#">#56-985</a>
5X	49	10	17	25	28	<a href="#">#56-986</a>
10X	59	10	14.5	30	30	<a href="#">#56-987</a>
20X	90	14.5	23	33	39	<a href="#">#87-228</a>
50X	97	14.7	23	33	39	<a href="#">#87-229</a>
100X	104	14.1	23	33	39	<a href="#">#87-230</a>

