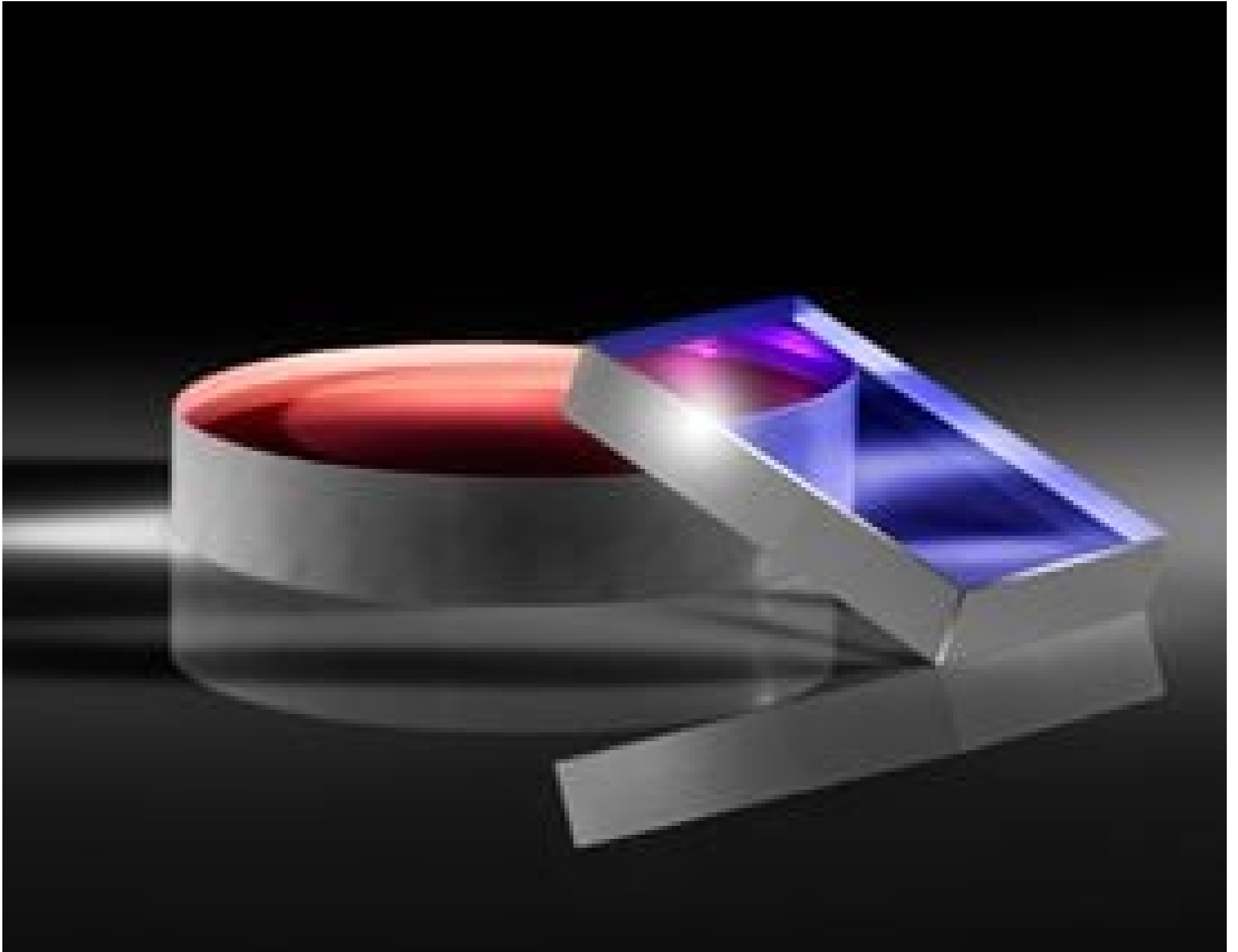


TECHSPEC® 19.1 x 12.7mm Laser Mirror Substrate



TECHSPEC® Laser Mirror Substrates

Stock **#37-727** **20+ In Stock**

⊖ 1 ⊕ **S\$140⁰⁰**

ADD TO CART

Volume Pricing	
Qty 1-10	S\$140.00 each
Qty 11-25	S\$126.70 each
Qty 26-50	S\$111.30 each
Need More?	Request Quote

Product Downloads

General

Laser Mirror Substrate **Type:**

Physical & Mechanical Properties

<3 **Parallelism (arcmin):**

85 **Clear Aperture (%):**

Commercial Polish	Back Surface:
19.1 x 12.7 +0.00/-0.10	Dimensions (mm):
6.35 ±0.20	Thickness (mm):
16.24 x 10.80	Clear Aperture CA (mm):
Ground, protective bevel as needed	Edges:

Optical Properties

10-5	Surface Quality:
λ/10	Surface Flatness (P-V):
Uncoated	Coating:
Fused Silica (Corning 7980)	Substrate: <input type="checkbox"/>

Regulatory Compliance

Compliant	RoHS 2015:
Compliant	Reach 211:
View	Certificate of Conformance:

Product Details

- λ/10 and λ/20 Surface Flatness and 10-5 Surface Quality
- High Quality Fused Silica Substrates
- Imperial Sizes with Circular or Rectangular Geometries
- [Window Substrates](#) Also Available

TECHSPEC® Laser Mirror Substrates are manufactured from high quality fused silica and are designed for use with high power laser sources. These mirrors feature excellent surface specifications, including λ/10 and λ/20 surface flatness and 10-5 surface quality, to limit the possibility of reduced performance due to surface defects. The high surface quality of these mirror blanks also makes them ideal for use in demanding intra-cavity laser applications. TECHSPEC Laser Mirror Substrates are available in standard imperial sizes, with either circular or rectangular geometries. Please contact us if your application requires a custom size laser mirror substrate.

Compatible Mounts