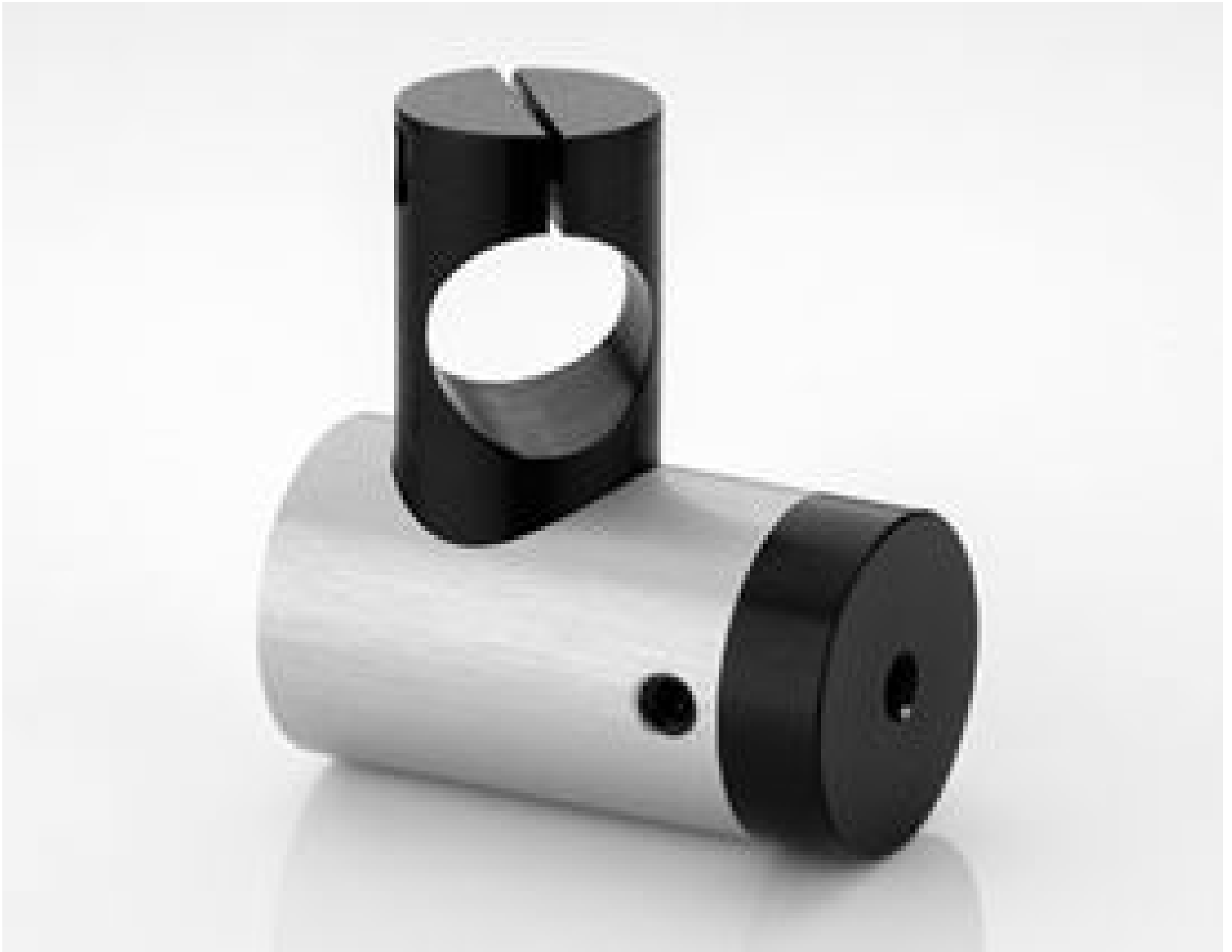


16mm Heavy Duty Clamp



16mm Heavy Duty Clamp

Stock **#72-821** **2 In Stock**

⊖ 1 ⊕ **S\$136⁰⁰**

ADD TO CART

Volume Pricing	
Qty 1-9	S\$136.50 each
Qty 10+	S\$129.50 each
Need More?	Request Quote

Product Downloads



SPECIFICATIONS

Regulatory Compliance

[Compliant](#)

RoHS 2015:

[View](#)

Certificate of Conformance:

PRODUCT DETAILS

- Circular and Elliptical Beam Options
- Bare Leads for Instrument Integration
- Focusable from 20mm to Infinity

Compact LDM Focusable Laser Diode Modules are self-contained and compact and offer a variety of features. They are an ideal replacement for a helium-neon laser in many applications and offer the benefits of superior durability, small size, and a range of wavelengths and powers. Elliptical output beams are produced using a user-adjustable glass focusing lens. Circular output beams are produced using a long focal length plastic lens and are suitable for long-distance and alignment applications. Compact LDM Focusable Laser Diode Modules applications include use as pilot beams for alignment, bar code readers, measurement, dimensional scanning, robotic control, target designation, positioning, and analysis. There is a focusing tool included with all diode modules. Line Generator attachments are available and sold separately for all diode modules listed. [Power Supply](#) is required for operation and is sold separately.

Note: The laser diode case is electrically isolated from the supply voltage.

TECHNICAL INFORMATION

