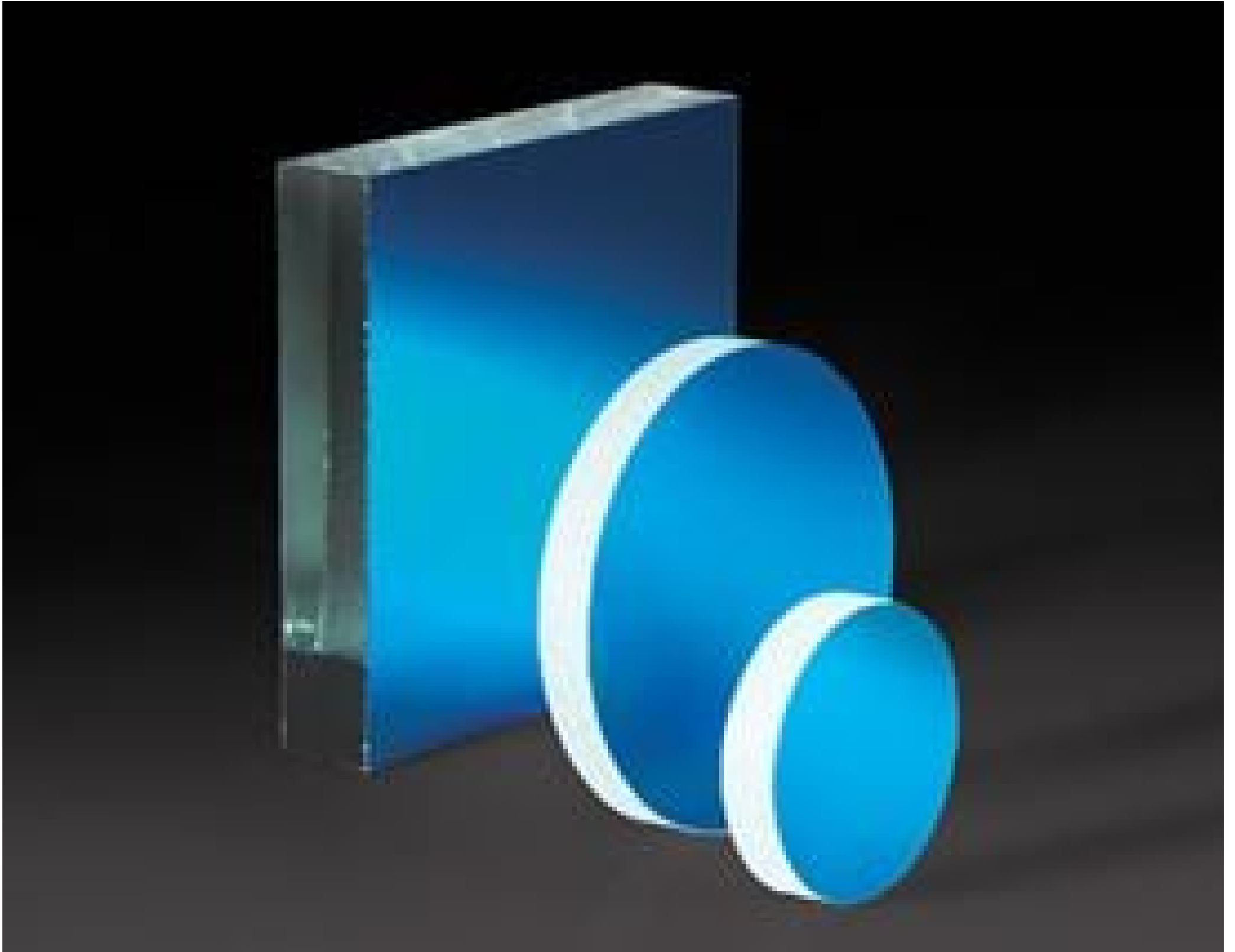


15mm Diameter Laser Diode Mirror



Stock #43-854 **13 In Stock**

- 1 + \$41⁶⁵

ADD TO CART

| Volume Pricing | |
|----------------|-------------------------------|
| Qty 1-10 | \$41.65 each |
| Qty 11-24 | \$32.20 each |
| Need More? | Request Quote |

Product Downloads

General

Flat Mirror **Type:**

Physical & Mechanical Properties

15.00 ±0.25 **Diameter (mm):**

3.00 **Thickness (mm):**

±0.25 **Dimensional Tolerance (mm):**

Optical Properties

Dielectric **Coating Type:**

Dielectric Mirror (500-700nm) **Coating:**

633 **Design Wavelength DWL (nm):**

Float Glass **Substrate:**

R_{abs} >97% @633nm **Coating Specification:**

80-50 **Surface Quality:**

Environmental & Durability Factors

ML-C-48497A **Durability:**

Regulatory Compliance

[Compliant](#) **RoHS 2015:**

[View](#) **Certificate of Conformance:**

[Compliant](#) **Reach 247:**

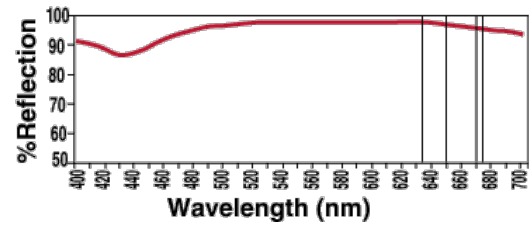
Product Details

- Over 95% Reflectance of Visible Laser Diode Light
- Ideal for Multiple Reflection Systems
- Coating Optimized for 633nm at 45° AOI

Visible Laser Diode Mirrors are specially coated to attain maximum reflection of visible laser diodes. Optimized for 633nm at a 45° angle of incidence, these mirrors provide 97% reflectance versus only 85 - 90% for standard first surface mirrors. This reduced loss is particularly important in multiple reflection systems, where loss can significantly impact system efficiency. Visible Laser Diode Mirrors feature a float glass substrate and are ideal for multiple reflection systems.

Technical Information

Visible Laser Diode Mirror Reflectance at 45°



| | |
|---------|-------|
| @ 500nm | 95.0% |
| @ 550nm | 97.0% |
| @ 600nm | 97.5% |
| @ 633nm | 97.0% |
| @ 635nm | 97.0% |
| @ 650nm | 96.5% |
| @ 670nm | 96.0% |
| @ 675nm | 95.0% |
| @ 700nm | 94.5% |

[Quote Your Size](#)

[Compatible Mounts](#)