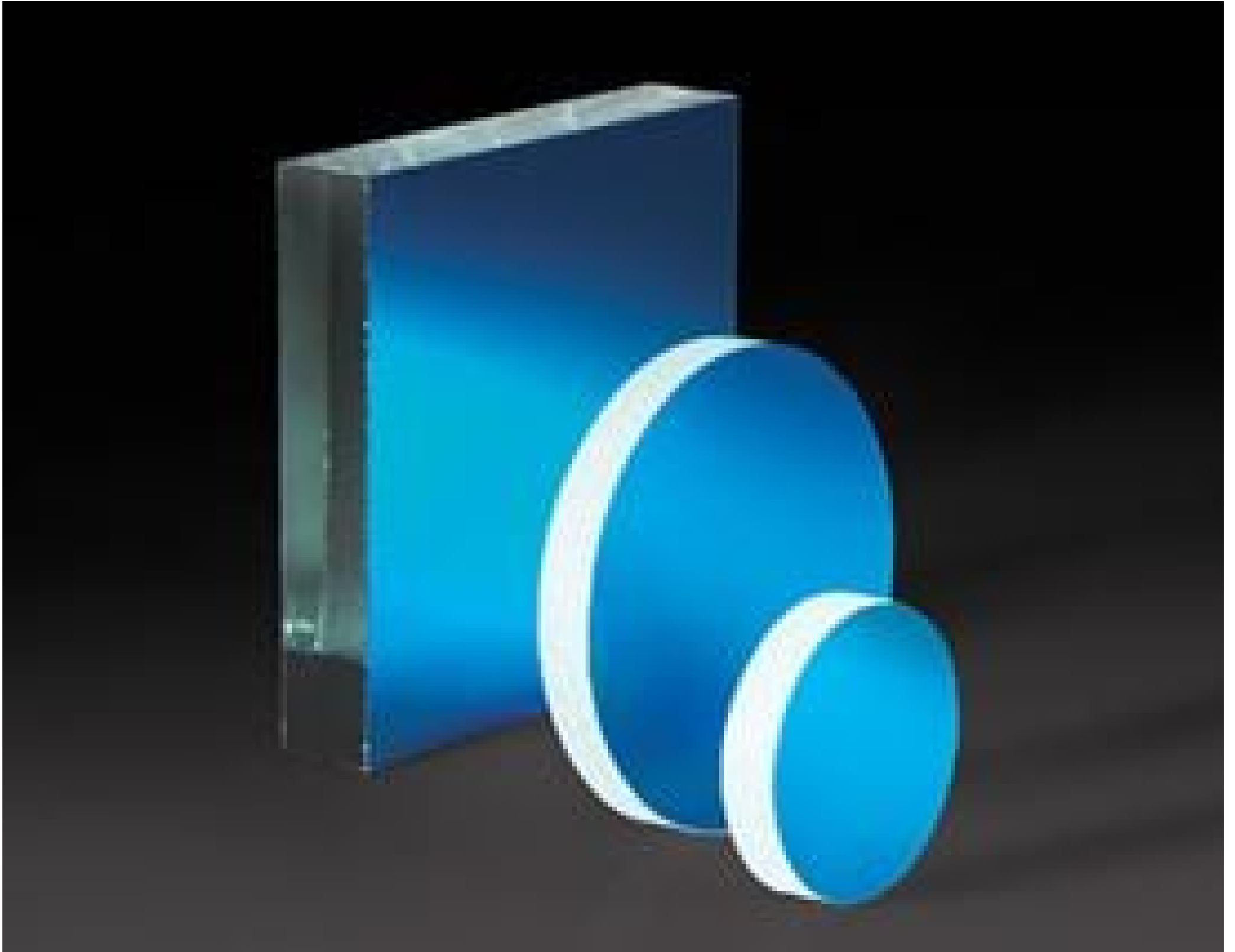


[See all 11 Products in Family](#)

## 15mm Diameter Laser Diode Mirror



Stock **#43-854** [CONTACT US](#)

- 1 + **\$41<sup>65</sup>**

**ADD TO CART**

Volume Pricing	
Qty 1-10	<b>\$41.65</b> each
Qty 11-24	<b>\$32.20</b> each
Need More?	<a href="#">Request Quote</a>

### Product Downloads

#### General

Flat Mirror **Type:**

#### Physical & Mechanical Properties

15.00 ±0.25 **Diameter (mm):**

3.00 **Thickness (mm):**

±0.25 **Dimensional Tolerance (mm):**

## Optical Properties

Dielectric **Coating Type:**

Dielectric Mirror (500-700nm) **Coating:**

633 **Design Wavelength DWL (nm):**

Float Glass **Substrate:**

R<sub>abs</sub> >97% @633nm **Coating Specification:**

80-50 **Surface Quality:**

## Environmental & Durability Factors

ML-C-48497A **Durability:**

## Regulatory Compliance

[Compliant](#) **RoHS 2015:**

[View](#) **Certificate of Conformance:**

[Compliant](#) **Reach 247:**

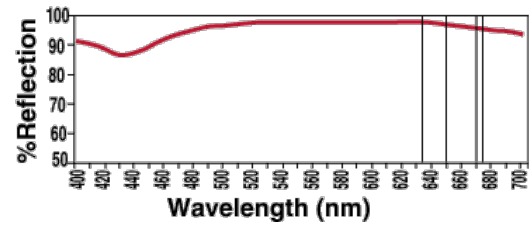
## Product Details

- Over 95% Reflectance of Visible Laser Diode Light
- Ideal for Multiple Reflection Systems
- Coating Optimized for 633nm at 45° AOI

Visible Laser Diode Mirrors are specially coated to attain maximum reflection of visible laser diodes. Optimized for 633nm at a 45° angle of incidence, these mirrors provide 97% reflectance versus only 85 - 90% for standard first surface mirrors. This reduced loss is particularly important in multiple reflection systems, where loss can significantly impact system efficiency. Visible Laser Diode Mirrors feature a float glass substrate and are ideal for multiple reflection systems.

## Technical Information

### Visible Laser Diode Mirror Reflectance at 45°



@ 500nm	95.0%
@ 550nm	97.0%
@ 600nm	97.5%
@ 633nm	97.0%
@ 635nm	97.0%
@ 650nm	96.5%
@ 670nm	96.0%
@ 675nm	95.0%
@ 700nm	94.5%

[Quote Your Size](#)

[Compatible Mounts](#)