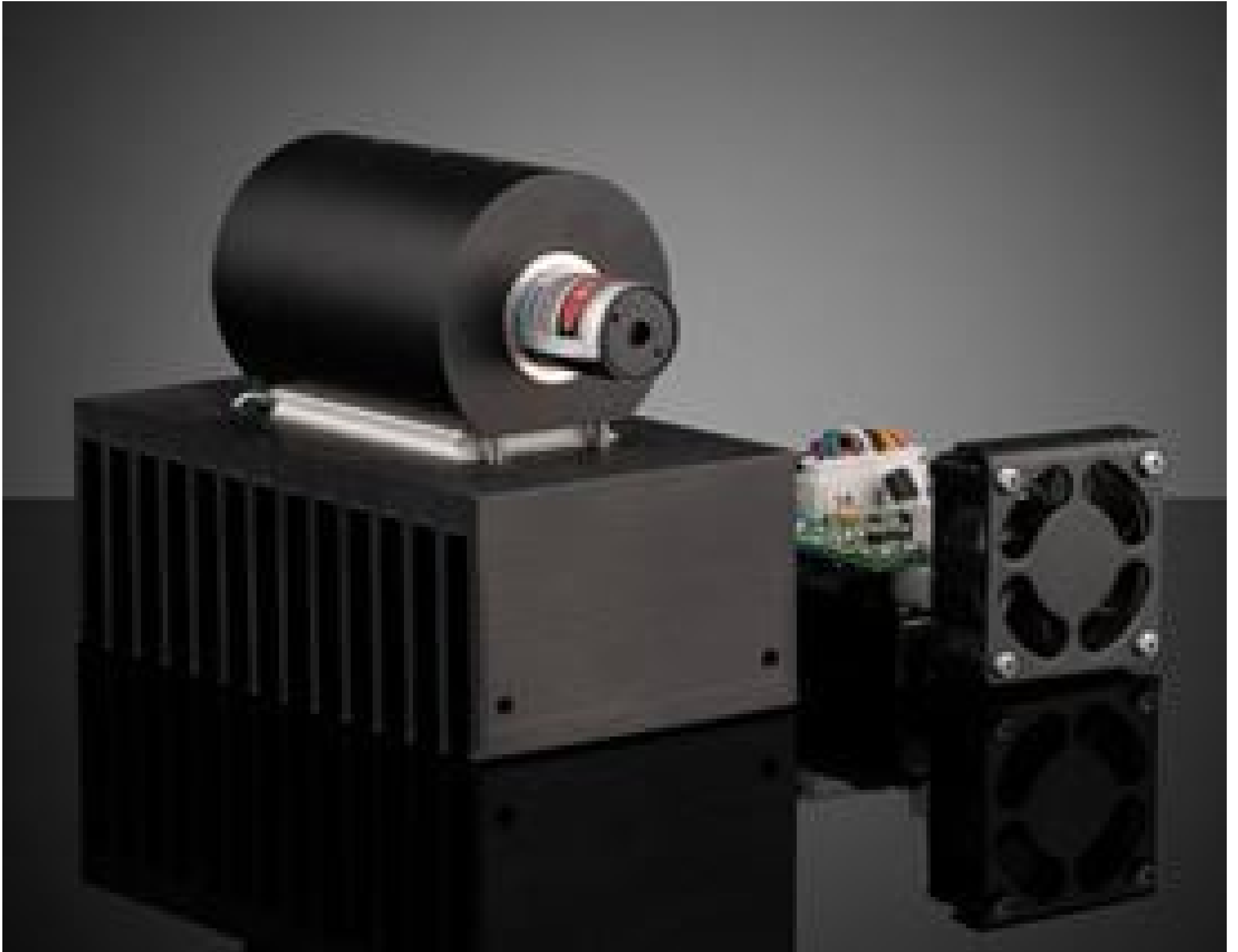


[See all 25 Products in Family](#)

## 12mm TEC Controller for DPSS Pointing Lasers



#37-042 (Laser) and #19-476 (TEC Controller)



Stock #72-536 **NEW** [CONTACT US](#)

1 **\$210<sup>00</sup>**

**ADD TO CART**

Volume Pricing	
Qty 1-9	<b>\$210.00</b> each
Qty 10+	<b>\$189.00</b> each
Need More?	<a href="#">Request Quote</a>

### Product Downloads



### General

**Note:**

Requires a 5V power supply [#73-818](#).  
Suitable for use with laser diodes that have an outer diameter of 12mm

### Regulatory Compliance

Certificate of Conformance:

## Product Details

- TTL Modulation up to 10kHz
- Transverse Mode TEM<sub>00</sub>
- Blue, Green, Yellow, and IR Output Wavelengths
- TEC or Heatsink Required for Operation ([Sold Separately](#))

DPSS Pointing Lasers are diode pumped solid state lasers available in output powers ranging from 1 to 100mW. With their solid state design, these lasers offer excellent mode purity and low divergence, making them ideal for applications that require long projection distances. The turnkey design featuring integrated optics and electronics in a single package is suitable for a variety of plug and play operations. DPSS Pointing Lasers provide high brightness circular output beams and are ideal for many different OEM applications. TEC Controller or heatsink is required to maintain 23°C – 27°C operating temperature range.

**Note:** Power supplies, TEC Controller ([#19-476](#)), Line Projection Heads (for 532nm - [#37-093](#))(for 1064nm - [#37-097](#)), and mounting brackets ([#37-144](#)) are sold separately.

---