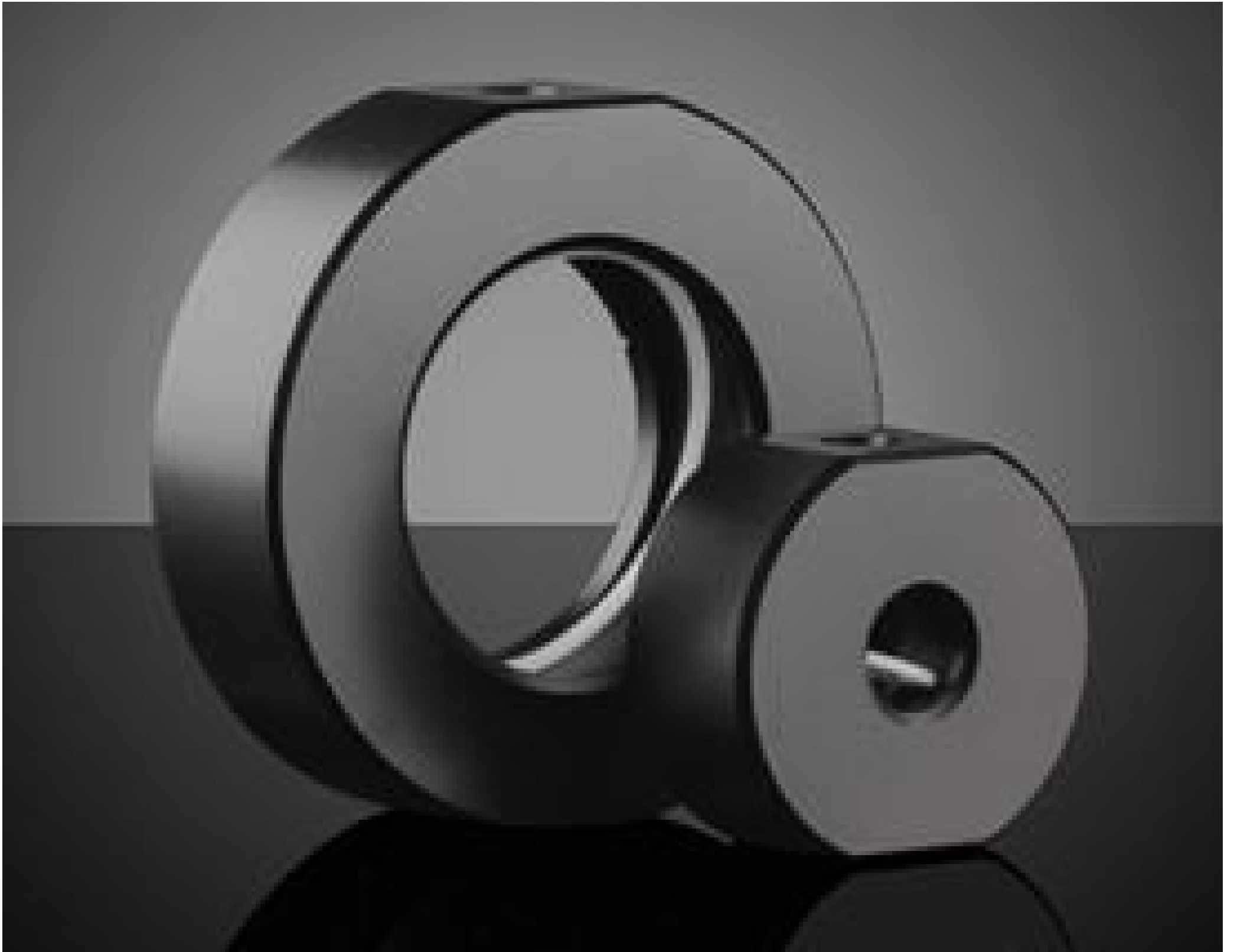


12.0mm Optic Dia., Optic Mount



Optic Component Mounts

Stock **#64-555** **2 In Stock**

S\$45⁰⁰

ADD TO CART

| Volume Pricing | |
|----------------|-------------------------------|
| Qty 1-9 | S\$45.85 each |
| Qty 10+ | S\$41.44 each |
| Need More? | Request Quote |

Product Downloads

SPECIFICATIONS

General

Fixed **Type:**

Circular **Type of Optics:**

Physical & Mechanical Properties

9.0 Clear Aperture CA (mm):

35.0 Outer Diameter (mm):

16.00 Thickness (mm):

Black Anodized Aluminum Construction:

10.00 Max. Thickness of Compatible Optics (mm):

Threading & Mounting

12.0 Size of Compatible Optics (mm):

M6 x 1.0, 1/4-20 Compatible Post:

Regulatory Compliance

Compliant RoHS 2015:

View Certificate of Conformance:

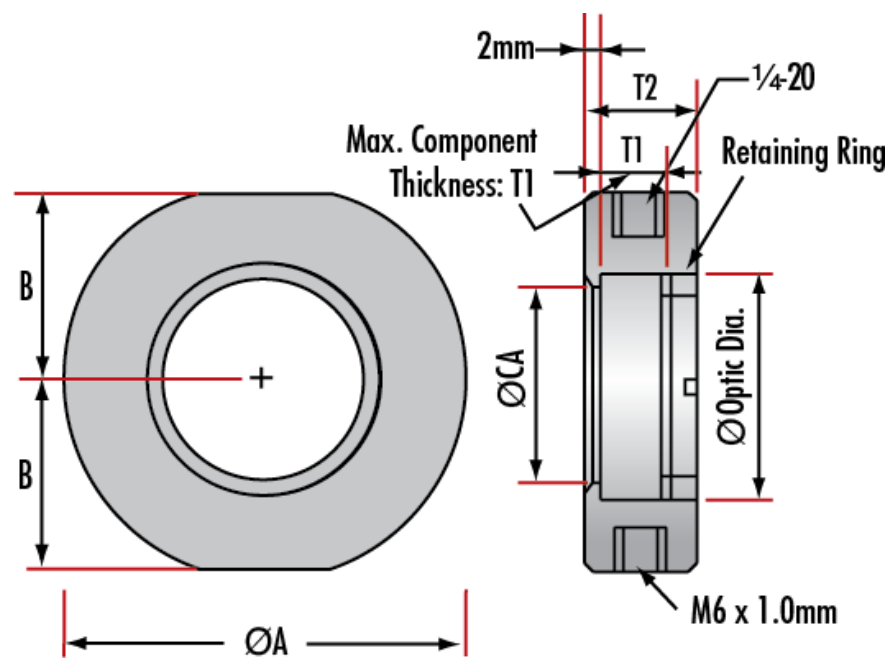
Compliant Reach 247:

PRODUCT DETAILS

- Simple Mounting Arrangement
- Metric and English Configurations
- Black Anodized Aluminum Construction
- [Posts](#) and [Post Holders](#) Required for Mounting

Optic Component Mounts are designed to hold lenses, filters, mirrors, and other optical components. The included retainer ring securely holds the component in place. Optic Component Mounts need the required [posts](#) and [post holders](#) for mounting to a breadboard. Both English (1/4-20) and Metric (M6) standard posts are accepted by the mounts. These mounts are constructed of black anodized aluminum in a simple mounting arrangement.

TECHNICAL INFORMATION



| Maximum Optic Diameter | Clear Aperture (CA) | Mount Diameter A | B | Maximum Optic Thickness T1 | Mount Thickness T2 | Stock No. |
|------------------------|---------------------|------------------|------|----------------------------|--------------------|-------------------------|
| 5 | 4 | 30 | 13.5 | 5.7 | 12 | #64-551 |
| 6 | 5 | 30 | 13.5 | 5.7 | 12 | #64-552 |
| 9 | 6 | 30 | 13.5 | 6 | 12 | #64-553 |
| 10 | 7 | 30 | 13.5 | 6 | 12 | #64-554 |
| 12 | 9 | 35 | 16.0 | 10 | 16 | #64-555 |
| 12.7 | 9.5 | 35 | 16.0 | 10 | 16 | #64-556 |
| 15 | 12 | 35 | 16.0 | 10 | 16 | #64-557 |
| 18 | 15 | 40 | 19.0 | 12 | 18 | #64-558 |
| 20 | 17 | 40 | 19.0 | 12 | 18 | #64-559 |
| 25 | 22 | 45 | 21.5 | 10 | 16 | #64-560 |

| | | | | | | |
|------|----|-----|------|----|----|---------|
| 25.4 | 22 | 45 | 21.5 | 10 | 16 | #64-561 |
| 25.4 | 22 | 45 | 21.5 | 13 | 19 | #65-562 |
| 30 | 26 | 50 | 24.0 | 6 | 12 | #64-563 |
| 30 | 26 | 50 | 24.0 | 12 | 18 | #64-564 |
| 38.1 | 34 | 60 | 29.0 | 12 | 18 | #64-565 |
| 40 | 36 | 60 | 29.0 | 12 | 18 | #64-566 |
| 50 | 46 | 70 | 34.0 | 12 | 18 | #64-567 |
| 50 | 46 | 70 | 34.0 | 18 | 24 | #64-568 |
| 50.8 | 46 | 70 | 34.0 | 12 | 28 | #64-569 |
| 76.2 | 71 | 100 | 49 | 20 | 26 | #64-570 |

