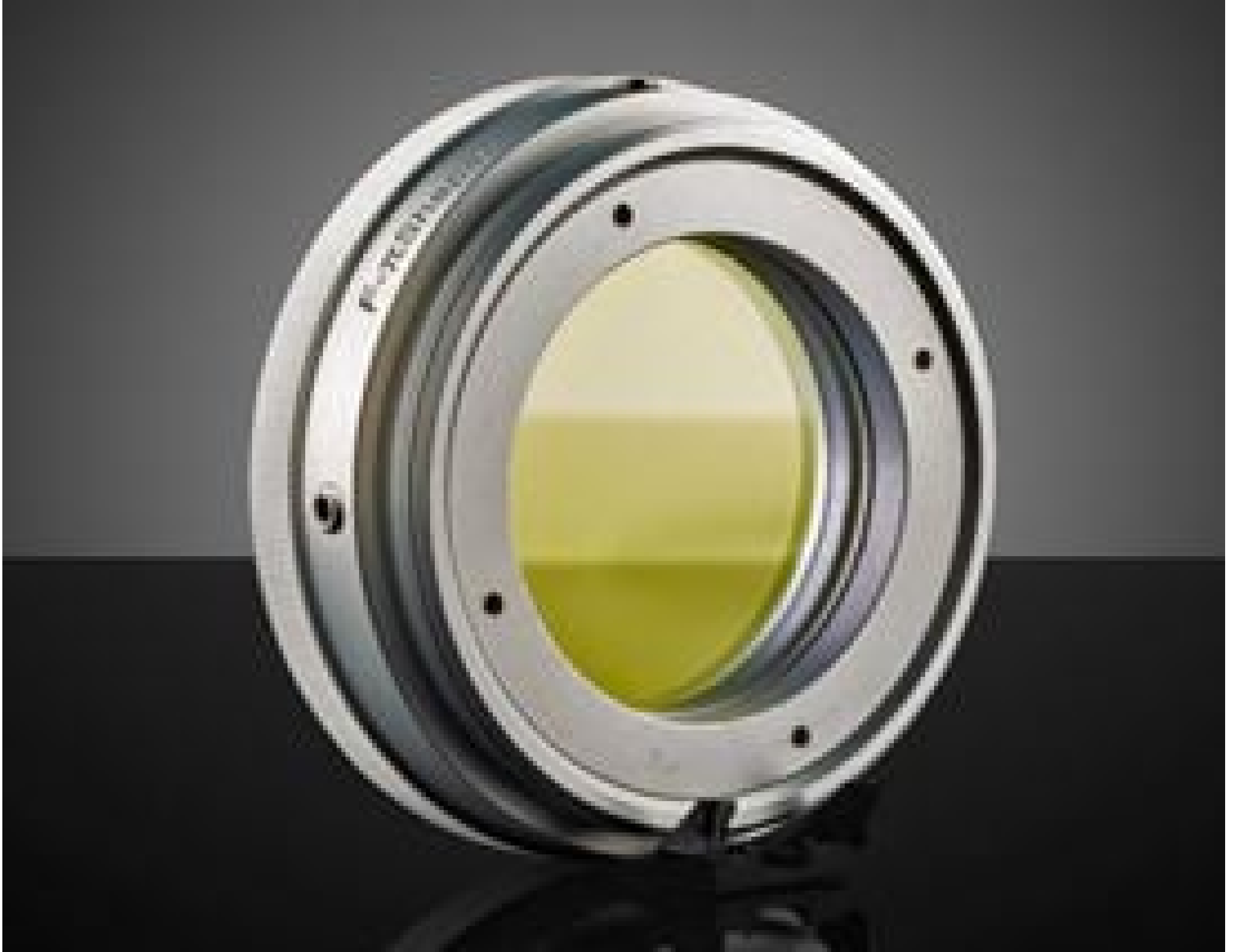


[See all 32 Products in Family](#)

1064nm, 18-23mm Dia. Input Beam, Focal Flat Top Beam Shaper | Focal πShaper_1064_Q-20

See More by [AdiOptica](#)



Focal Flat Top Beam Shaper



Stock #12-237 **1 In Stock**

S\$4,423⁰⁰

ADD TO CART

Volume Pricing	
Qty 1-4	S\$4,423.00 each
Qty 5-10	S\$3,976.00 each
Qty 11+	S\$3,762.00 each
Need More?	Request Quote

Product Downloads

General

πShaper_1064_Q-20

Model Number:

Type:

#12-323

Compatible Adapter:

Physical & Mechanical Properties

21.00 Length (mm):

70 Weight (g):

38 Clear Aperture CA (mm):

64.00 Diameter (mm):

18 - 23 Input Beam Diameter, 1/e² (mm):**Optical Properties**

>99 Transmission (%):

1064 Design Wavelength DWL (nm):

1020 - 1100 Wavelength Range (nm):

TEM₀₀ Input Beam Mode:<1.5 Typical Input Beam Mode Quality, M²:

±20 Input Beam Divergence (mrad):

Electrical

0.4 Maximum Input Power, CW (kW):

Threading & Mounting

M58 x 1 Inner Thread:

M58 x 1 Outer Thread:

Regulatory Compliance

Compliant RoHS 2015:

View Certificate of Conformance:

Compliant Reach 250:

Product Details

- Shapes Gaussian Beams to AiryDisk Profile
- AiryDisk is Focusable to Flat Top Spot
- Near 100% Efficiency
- [AdlOptica πShaper Flat Top Beam Shapers](#) Also Available

AdlOptica Focal-πShaper (piShaper) Q Flat Top Beam Shapers are used to transform Gaussian beams to flat-top profiles after focusing through a lens. This is accomplished by transforming the Gaussian beam to airy disk profiles immediately after the piShaper. These beam shapers feature a compact design with inner and outer threading, making them easy to integrate into equipment. AdlOptica Focal-πShapers are advantageous for beam shaping in micromachining applications, including scribing and PCB drilling, as well as micro-welding applications. Multiple models are available at Nd:YAG, Ti:Sapphire, and Infrared wavelengths with compatible input beam diameters as small as 2.5mm and up to 23mm.

Technical Information

