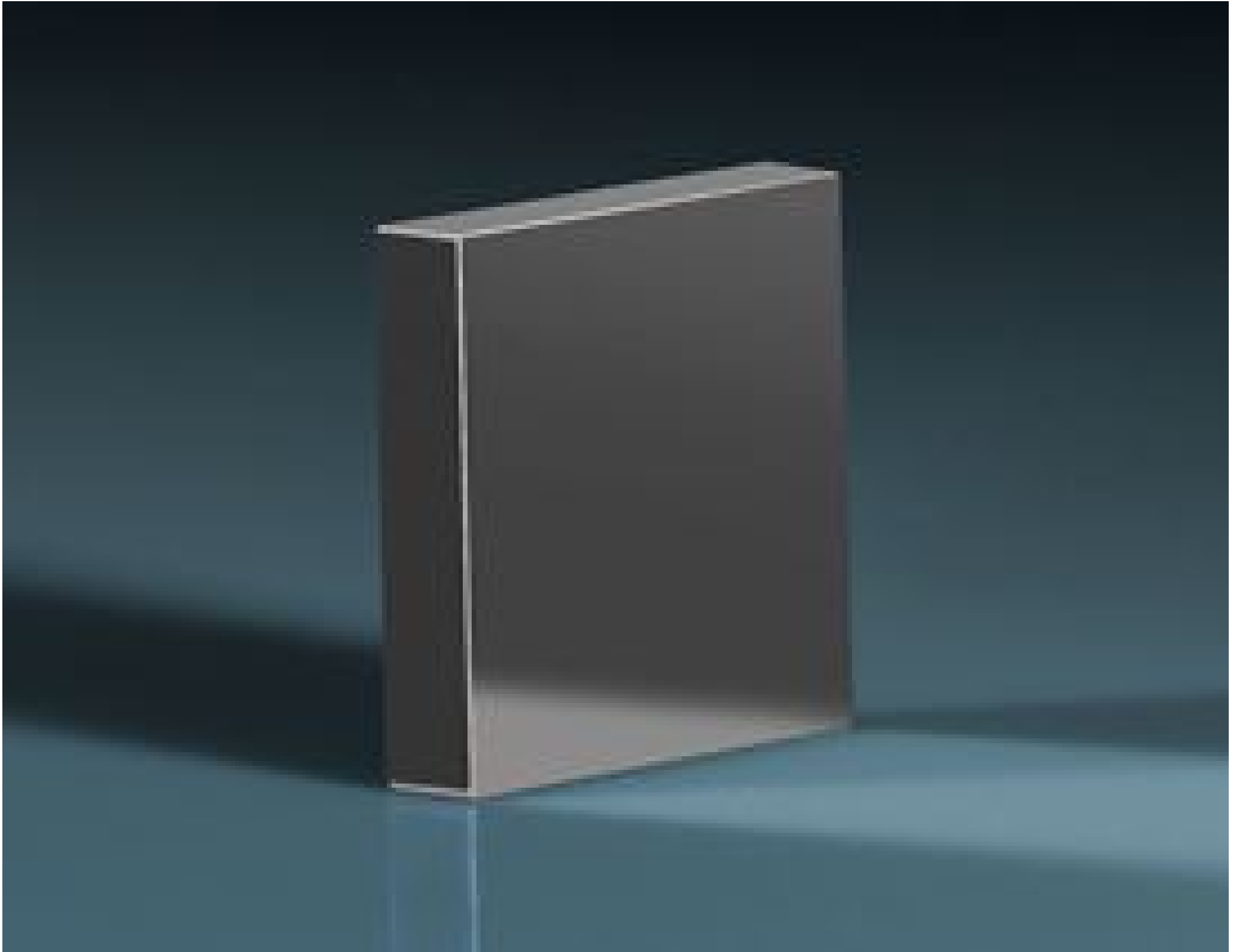


[See all 64 Products in Family](#)

**TECHSPEC® 10 x 10mm Protected Silver,  $\lambda/20$  Mirror**



10 x 10mm Protected Silver,  $\lambda/20$  Mirror, #34-387

Stock **#34-387** [CONTACT US](#)

⊖ 1 ⊕ **S\$232<sup>00</sup>**

**ADD TO CART**

Volume Pricing	
Qty 1-5	<b>S\$232.40</b> each
Qty 6-25	<b>S\$184.80</b> each
Qty 26-49	<b>S\$175.00</b> each
Need More?	<a href="#">Request Quote</a>

Product Downloads

**General**

Flat Mirror **Type:**

**Physical & Mechanical Properties**

2.00 **Thickness (mm):**

10.0 x 10.0 +0.00/-0.20 **Dimensions (mm):**

Commercial Polish	<b>Back Surface:</b>
90.00	<b>Clear Aperture (%):</b>
Ground, protective bevel as needed	<b>Edges:</b>
10.00	<b>Length (mm):</b>
10.00	<b>Width (mm):</b>
30.00	<b>Parallelism (arcsec):</b>

## Optical Properties

Metal	<b>Coating Type:</b>
Protected Silver (450-10000nm)	<b>Coating:</b>
$\lambda/20$ (flatness pre-coating)	<b>Surface Flatness (P-V):</b>
450 - 10000	<b>Wavelength Range (nm):</b>
<a href="#">Fused Silica</a> (Corning 7980)	<b>Substrate:</b> <input type="checkbox"/>
$R_{avg} >98\%$ @ 450 - 2000nm $R_{avg} >98\%$ @ 2000 - 10,000nm	<b>Coating Specification:</b>
20-10	<b>Surface Quality:</b>

## Regulatory Compliance

<a href="#">Compliant</a>	<b>RoHS 2015:</b>
<a href="#">View</a>	<b>Certificate of Conformance:</b>
<a href="#">Compliant</a>	<b>Reach 247:</b>

## Need different specs or modifications?

Edmund Optics offers comprehensive custom manufacturing services for optical and imaging components tailored to your specific application requirements. Whether in the prototyping phase or preparing for full-scale production, we provide flexible solutions to meet your needs. Our experienced engineers are here to assist—from concept to completion.

Our capabilities include:

- Custom dimensions, materials, coatings, and more
- High-precision surface quality and flatness
- Tight tolerances and complex geometries
- Scalable production—from prototype to volume

Learn more about our [custom manufacturing capabilities](#) or submit an inquiry [here](#).

## Product Details

- Precision Fused Silica Substrate
- 20-10 Surface Quality
- Low Coefficient of Thermal Expansion

TECHSPEC®  $\lambda/20$  First Surface Mirrors are polished to industry leading surface accuracy and quality specifications to minimize reflected wavefront error. These mirrors feature a precision fused silica substrate with a low coefficient of thermal expansion. Multiple coating options are available, allowing these mirrors to be integrated into applications spanning the visible through infrared spectra. TECHSPEC®  $\lambda/20$  First Surface Mirrors are ideal for beam steering and reflection applications and are available in a variety of size, thickness, and coating options.

**Note:** Surface flatness is measured before coating.

## Technical Information



Protected Aluminum		Enhanced Aluminum		UV Thermal Aluminum		Protected Gold		Protected Silver	
Range (µm)	% Reflection	Range (µm)	% Reflection	Range (µm)	% Reflection	Range (µm)	% Reflection	Range (µm)	% Reflection
0.4 - 0.7	85	0.45 - 0.65	95	0.25 - 0.45	89	0.7 - 2.0	96	0.45 - 2.0	98
0.4 - 2.0	90	-	-	0.25 - 0.70	85	2.0 - 10.0	96	2.0 - 10.0	98

## Coating Curves

## Compatible Mounts