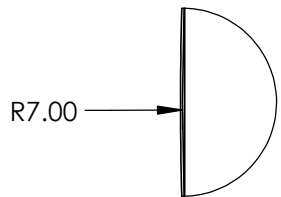
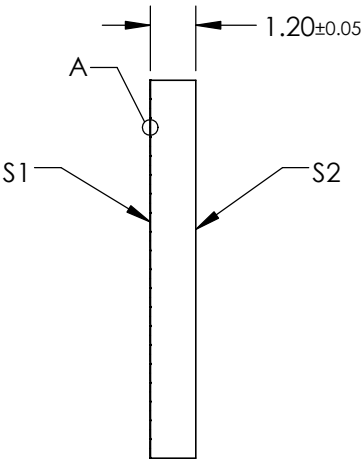
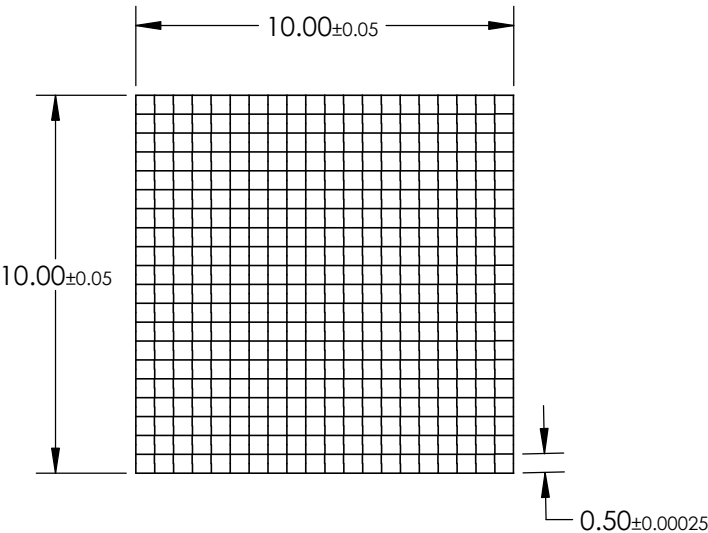


NOTES:

- 1. SUBSTRATE:  
Fused Silica
- 2. COATING (APPLY ACROSS COATING APERTURE):  
S1 & S2: R(ABS) ≤ 1.5% FROM 750-800nm  
R(ABS) ≤ 1.0% FROM 800-1550nm  
R(AVG) ≤ 0.7% FROM 750-1550nm
- 3. EFFECTIVE FOCAL LENGTH: 15.3mm
- 4. DIVERGENCE ANGLE: ±1 °
- 5. WAVELENGTH RANGE (nm): 750 - 1550
- 6. ROHS: COMPLIANT



DETAIL A



SPECIFICATIONS SUBJECT TO CHANGE WITHOUT NOTICE  
DIMENSIONS ARE FOR REFERENCE ONLY

**FOR INFORMATION ONLY:  
DO NOT MANUFACTURE  
PARTS TO THIS DRAWING**

**Edmund Optics®**

THIRD ANGLE PROJECTION		TITLE	Microlens Array 10 x 10mm, 500µm Pitch, 1° Divergence, NIR II Coated	
ALL DIMS IN	mm	DWG NO	21159	SHEET 1 OF 1