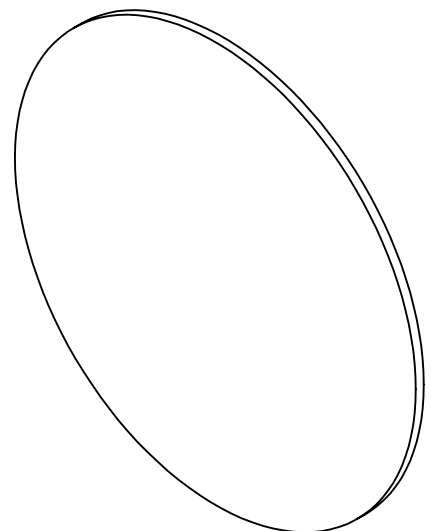
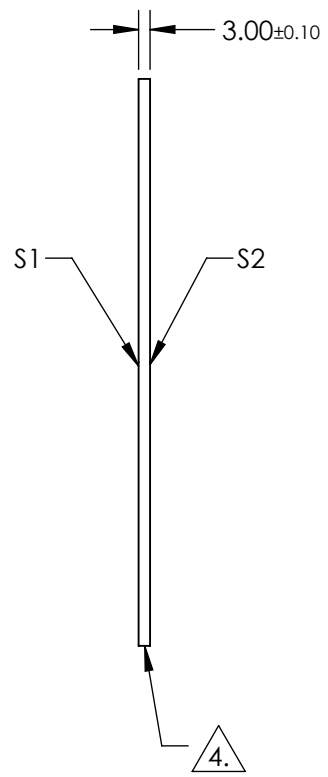
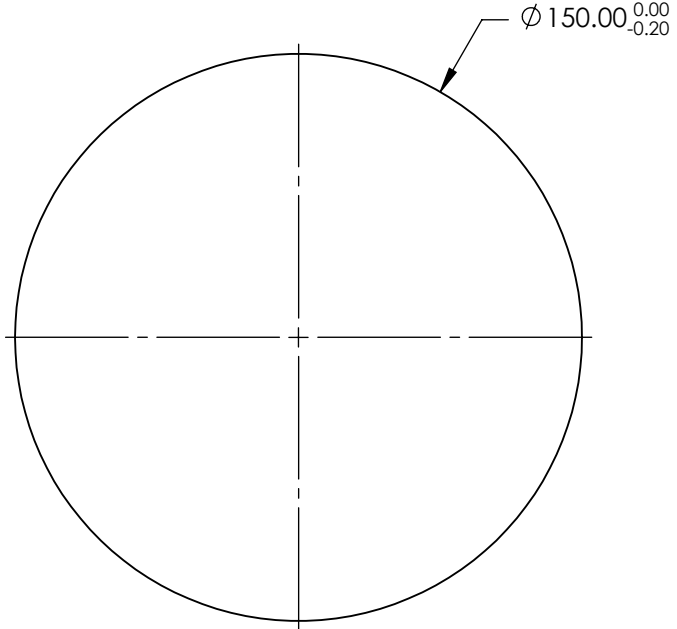


NOTES:

- 1. SUBSTRATE:
Fused Silica (Corning 7980)
- 2. S2 TO BE PARALLEL WITH S1 TO WITHIN <1' ARCMIN
- 3. COATING (APPLY ACROSS CLEAR APERTURE)
S1 & S2: R(ABS) ≤1.0% FROM 350 - 450nm
R(AVG) ≤1.5% FROM 250 - 700nm
- 4. FINE GRIND SURFACE
- 5. RoHS COMPLIANT



**FOR INFORMATION ONLY:
DO NOT MANUFACTURE
PARTS TO THIS DRAWING**

SPECIFICATIONS SUBJECT TO CHANGE WITHOUT NOTICE
DIMENSIONS ARE FOR REFERENCE ONLY

	S1	S2	<div><div><div>THIRD ANGLE PROJECTION</div></div><div><div>ALL DIMS IN</div><div>mm</div></div></div> <div><div><div>Edmund Optics®</div><div>150mm Dia., 3mm Thick, UV-VIS Coated, λ/4 Fused Silica Window</div></div><div><div>DWG NO</div><div>22057</div></div><div><div>SHEET</div><div>1 OF 1</div></div></div>			
SHAPE	PLANO	PLANO	TITLE			
SURFACE QUALITY	40-20	40-20				
CLEAR APERTURE (mm)	Ø135.00	Ø135.00				
BEVEL	PROTECTIVE AS NEEDED	PROTECTIVE AS NEEDED				