

NOTES:

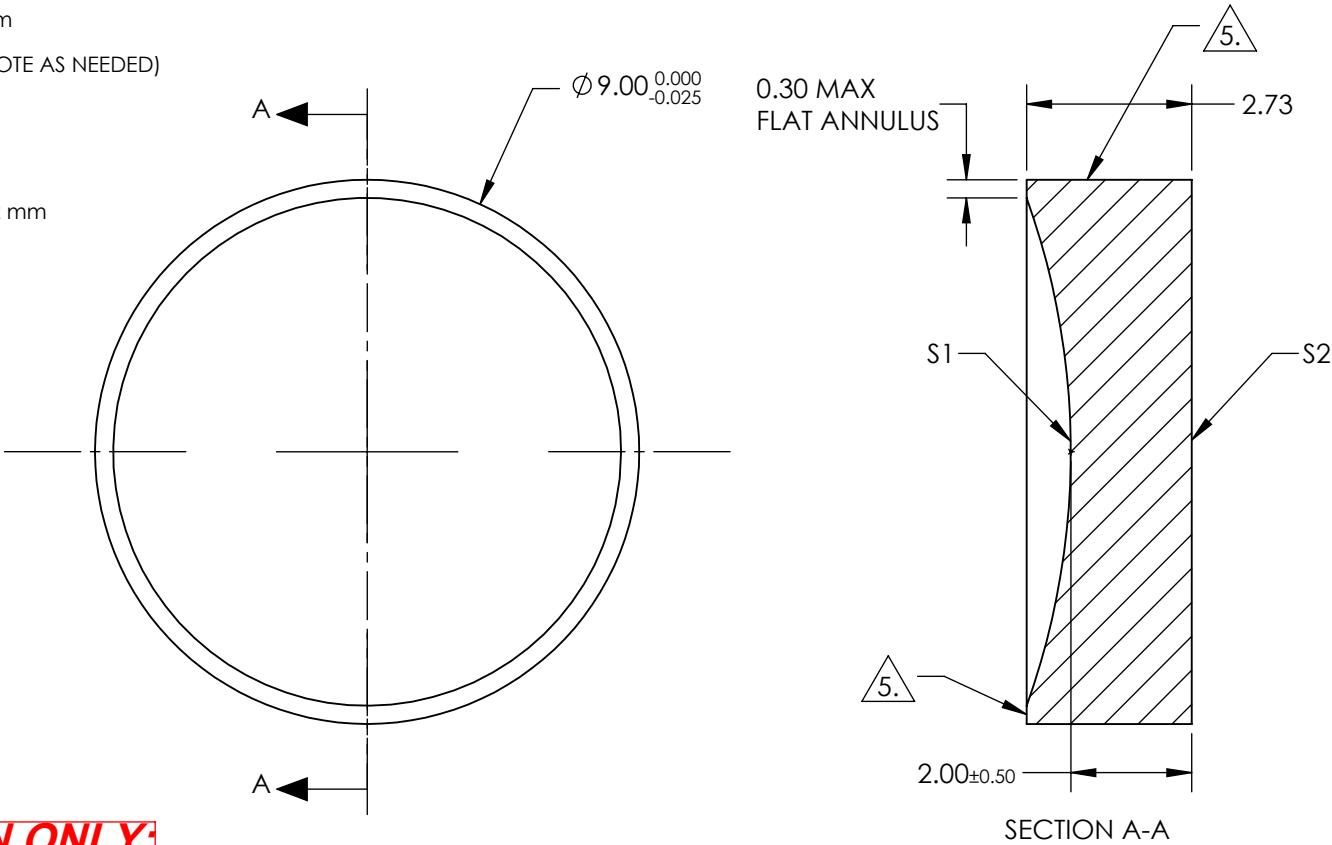
- 1. SUBSTRATE:  
FUSED SILICA
- 2. ROHS COMPLIANT
- 3. COATING (APPLY ACROSS CLEAR APERTURE)

S1 & S2: 1064 V-COAT  
R(ABS) <0.25% @ 1064nm

4. FINE GRIND SURFACE (ADD INK NOTE AS NEEDED)

5. FINE GRIND SURFACE

6. FOCAL LENGTH (EFL): -27.00 mm  
BACK FOCAL LENGTH (BFL): -28.42 mm

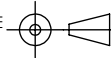


**FOR INFORMATION ONLY:  
DO NOT MANUFACTURE  
PARTS TO THIS DRAWING**

SPECIFICATIONS SUBJECT TO CHANGE WITHOUT NOTICE  
DIMENSIONS ARE FOR REFERENCE ONLY

	S1	S2
SHAPE	CONCAVE	PLANO
RADIUS	-12.40	INFINITY
SURFACE QUALITY	40-20	40-20
CLEAR APERTURE	$\varnothing 8.1$	$\varnothing 8.1$
BEVEL	PROTECTED AS NEEDED	PROTECTED AS NEEDED

THIRD ANGLE  
PROJECTION



ALL DIMS IN

mm



Edmund Optics®

TITLE

9.0mm Dia. x -27 FL, 1064 V-Coat, UV Plano-  
Concave Lens

DWG NO

21031

SHEET  
1 OF 1