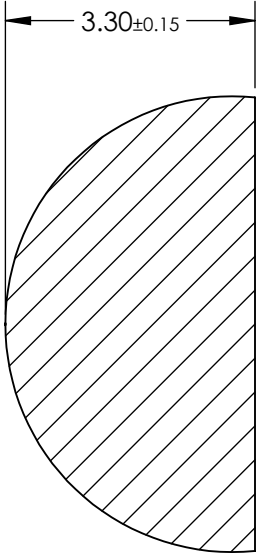
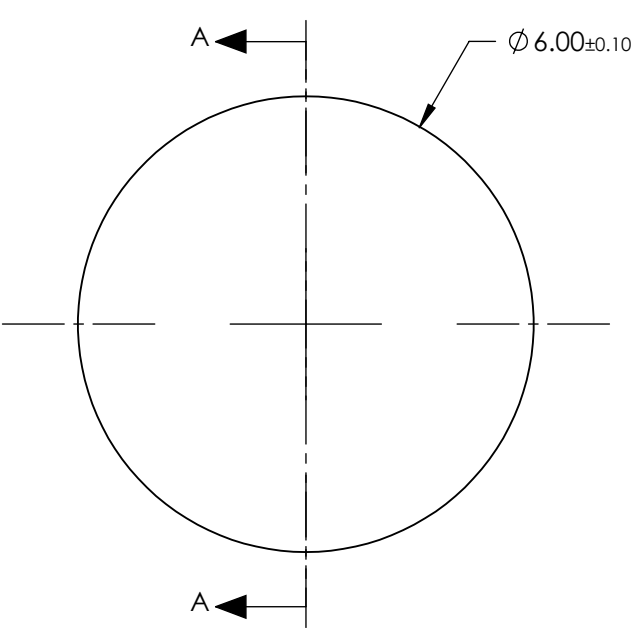


NOTES:

- 1. SUBSTRATE:
B270
- 2. COATING (APPLY ACROSS CLEAR APERTURE)

S1 & S2: NONE

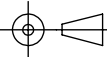


SECTION A-A

**FOR INFORMATION ONLY:
DO NOT MANUFACTURE
PARTS TO THIS DRAWING**

SPECIFICATIONS SUBJECT TO CHANGE WITHOUT NOTICE
DIMENSIONS ARE FOR REFERENCE ONLY

EO[®] Edmund Optics[®]

THIRD ANGLE PROJECTION 		TITLE	6mm Diameter, Extended B270 Half-Ball Lens	
ALL DIMS IN	mm	DWG NO	21907	SHEET 1 OF 1