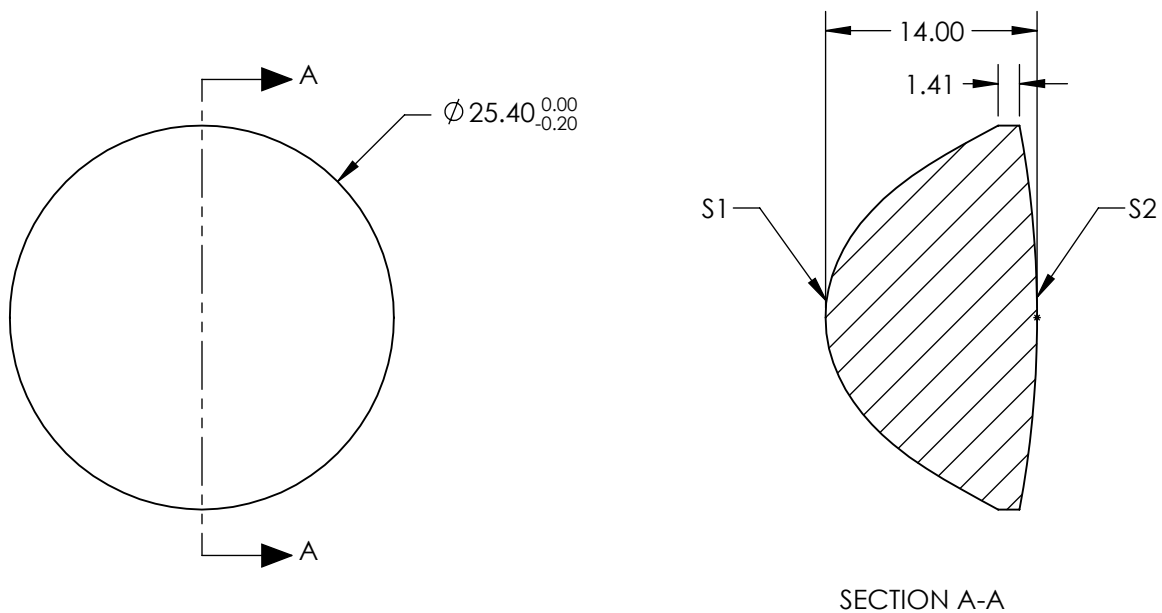



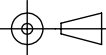
- NOTES:
- 1. SUBSTRATE:
H-K51
 - 2. COATING (APPLY ACROSS CLEAR APERTURE)

S1: NONE
S2: NONE
 - 3. CENTERING: ≤30 ARCMIN



**FOR INFORMATION ONLY:
DO NOT MANUFACTURE
PARTS TO THIS DRAWING**

SPECIFICATIONS SUBJECT TO CHANGE WITHOUT NOTICE
DIMENSIONS ARE FOR REFERENCE ONLY

	S1	S2	EFL @ 587.6nm	16	 Edmund Optics®		
SHAPE	CONVEX	CONVEX	BFL @ 587.6nm	7.3			
SURFACE QUALITY	80-50 (typical)	80-50 (typical)			TITLE	25.4mm Dia. x 16mm FL, Aspheric Condenser Lens	
CLEAR APERTURE	Ø 22.86	Ø 22.86					
BEVEL	PROTECTED AS NEEDED	PROTECTED AS NEEDED	ALL DIMS IN	mm	DWG NO	19518	SHEET 1 OF 1