

NOTES:

1. SUBSTRATE:
ZERODUR®

2. S2 TO BE PARALLEL TO S1 TO WITHIN 30 ARCSEC

3. COATING (APPLY ACROSS CLEAR APERTURE)

S1: Protected Silver (450-10000nm)
R(AVG) >98% @ 450 - 2000nm
R(AVG) >98% @ 2000 - 10,000nm
S2: NONE

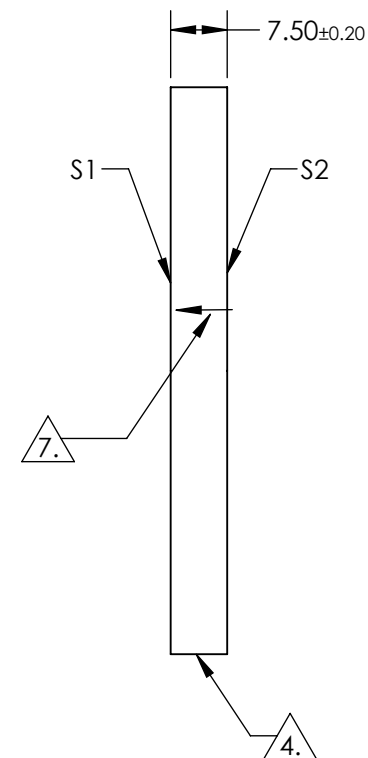
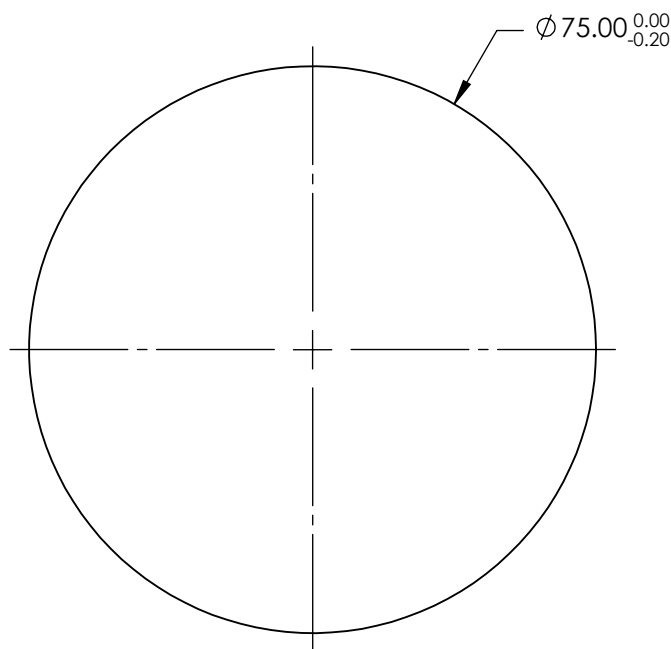
4. FINE GRIND SURFACE (ADD INK NOTE AS NEEDED)

5. CLEAR APERTURE AND COATING APERTURE ARE CENTERED ON SURFACE

6. SURFACE QUALITY SPECIFICATIONS APPLY ACROSS CLEAR APERTURE

7. ARROW ON EDGE POINTS TOWARDS 1/10TH WAVE SURFACE S1

8. ROHS COMPLIANT



**FOR INFORMATION ONLY:
DO NOT MANUFACTURE
PARTS TO THIS DRAWING**

SPECIFICATIONS SUBJECT TO CHANGE WITHOUT NOTICE
DIMENSIONS ARE FOR REFERENCE ONLY

	S1	S2
SHAPE	PLANO	PLANO
SURFACE QUALITY	20-10	COMMERCIAL POLISH
SURFACE FLATNESS	$\lambda/10$	N/A
CLEAR APERTURE	$\varnothing 67.50$	N/A
BEVEL	PROTECTED AS NEEDED	PROTECTED AS NEEDED

THIRD ANGLE
PROJECTION

ALL DIMS IN mm

EO® Edmund Optics®

TITLE

75mm Dia. Protected Silver Coated, $\lambda/10$
ZERODUR® Mirror

DWG NO

17796

SHEET
1 OF 1