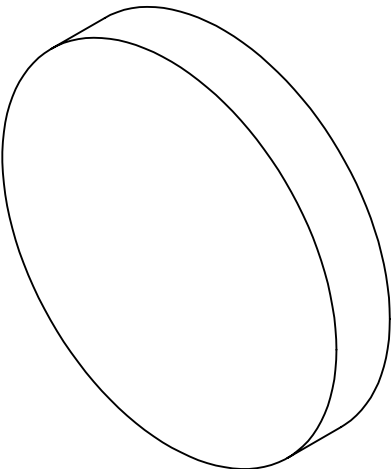
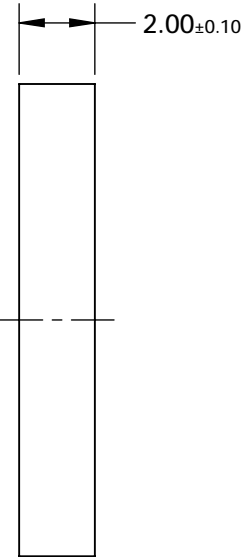
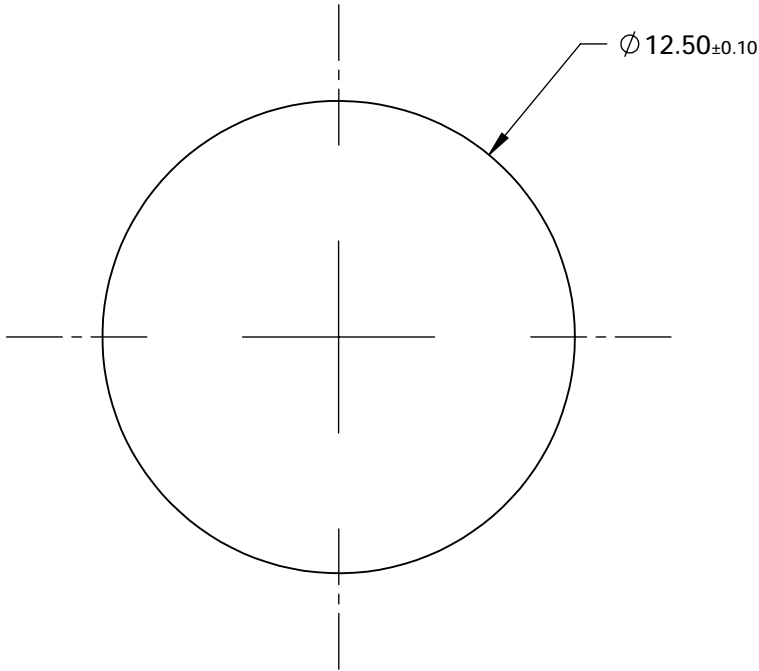


- NOTES:
- 1. MATERIAL: UV Grade Fused Silica
  - 2. TRANSMITTED WAVEFRONT ERROR: <  $\lambda/4$

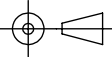


|  | VALUE                       |
|--|-----------------------------|
| CENTER WAVELENGTH (CWL)                        | 572.00 nm                   |
| TRANSMISSION BANDWIDTH (MINIMUM)               | 28.00 nm                    |
| FULL WIDTH HALF MAX (TYPICAL)                  | 33.00 nm                    |
| AVERAGE TRANSMISSION OVER BANDWIDTH (MINIMUM)  | 93 %                        |
| BLOCKING WAVELENGTH RANGE                      | 250 - 1120 nm               |
| OD6 BLOCKING RANGE < 3% FROM EDGE OF BANDWIDTH | 250 - 547 & 602 - 925       |
| CLEAR APERTURE (mm)                            | Ø11.25                      |
| SURFACE QUALITY                                | 60-40                       |
| COATING TYPE                                   | HARD COATED                 |
| DURABILITY                                     | MIL-C-48497A, SECTION 3.4.1 |
| ENVIRONMENTAL                                  | MIL-STD-810F, SECTION 507.4 |

**FOR INFORMATION ONLY:**  
**DO NOT MANUFACTURE**  
**PARTS TO THIS DRAWING**

SPECIFICATIONS SUBJECT TO CHANGE WITHOUT NOTICE  
DIMENSIONS ARE FOR REFERENCE ONLY

**EO**® **Edmund Optics®**

|  |    |        |  |                 |
|--|----|--------|--|-----------------|
| THIRD ANGLE PROJECTION  |    | TITLE  | 572nm CWL, 12.5mm Dia, 28nm Bandwidth,<br>Unmounted OD 6 Fluorescence Bandpass<br>Filter |                 |
| ALL DIMS IN  | mm | DWG NO | 18375  | SHEET<br>1 OF 1 |