

NOTES:

1. SUBSTRATE:
N-SF6
2. CENTERING TOLERANCE (AT 587.6nm): <3 ARCMIN
3. COATING (APPLY ACROSS COATING APERTURE)
S1: NONE
S2: NONE

4. EDGES: FINE GROUND

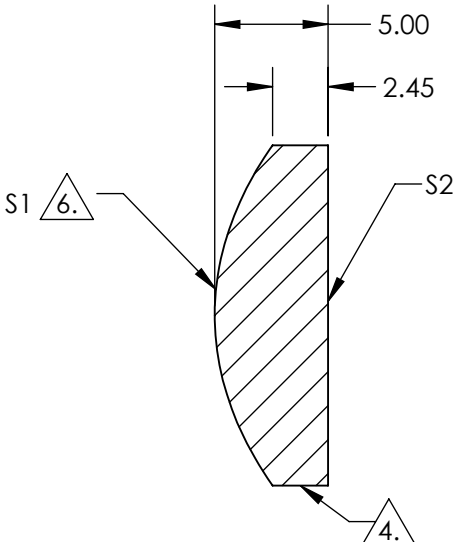
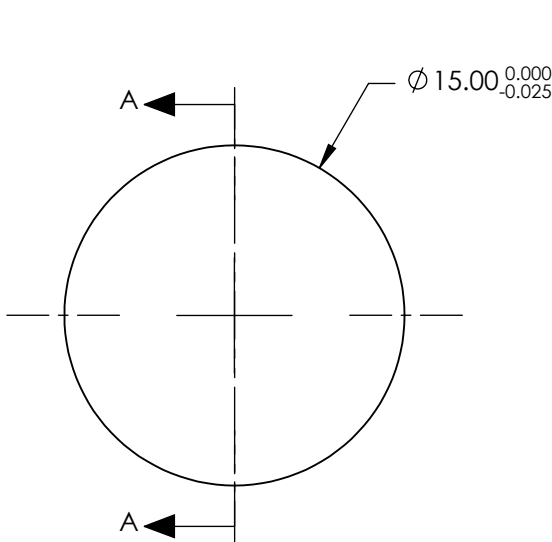
5. ASPHERIC FIGURE ERROR: 0.25 µm RMS

6. ASPHERIC SURFACE DESCRIBED BY (REF. COEFFICIENT TABLE):

$$Z_{ASPH}(Y) = \frac{(1/RADIUS)^2 * Y^2}{1 + \sqrt{1 - (1+k) * (1/RADIUS)^2 * Y^2}} + D * Y^2 + E * Y^4 + F * Y^6 + G * Y^8 + H * Y^{10} + J * Y^{12} + L * Y^{14}$$

**FOR INFORMATION ONLY:
DO NOT MANUFACTURE
PARTS TO THIS DRAWING**

SPECIFICATIONS SUBJECT TO CHANGE WITHOUT NOTICE
DIMENSIONS ARE FOR REFERENCE ONLY




SECTION A-A

COEFFICIENT TABLE 6.	
COEFFICIENT	S1
SEMI-DIAMETER	7.500000E+00
(1/RADIUS)	8.740494E-02
k	-9.980000E-00
D	0.000000E+00
E	2.973328E-05
F	-1.051753E-08
G	-1.573969E-10
H	-6.483899E-14
J	0.000000E+00
L	0.000000E+00

	S1	S2
SHAPE	CONVEX	PLANO
SURFACE QUALITY	40-20	40-20
CLEAR APERTURE	Ø 13.5mm	Ø 13.5mm
BEVEL	PROTECTIVE AS NEEDED	PROTECTIVE AS NEEDED

EFL@1550nm: 15.00
BFL@587.6nm: 11.44
THIRD ANGLE PROJECTION
ALL DIMS IN

 Edmund Optics®	
TITLE	ASPHERE PREC 15mm F/1.0 1500nm UNCTD
DWG NO	17416
SHEET	1 OF 1