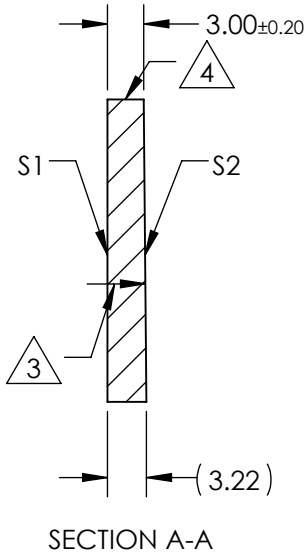
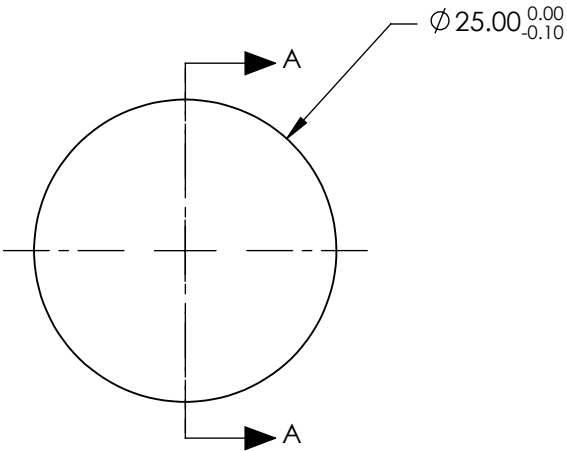


NOTES:

1. SUBSTRATE MATERIAL:  
Fused Silica (Corning 7980)
2. COATING (APPLY ACROSS CLEAR APERTURE)  
S1 & S2: Rabs ≤0.25% @ 880nm  
Ravg ≤1.25% @ 400 - 870nm  
Ravg ≤1.25% @ 890 - 1000nm
3. ARROW POINTS TOWARDS TILTED SURFACE
4. FINE GROUND SURFACE
5. POWER, IRREGULARITY, AND SURFACE QUALITY SPECIFICATIONS APPLY ACROSS CLEAR APERTURE
6. RoHS COMPLIANT



**FOR INFORMATION ONLY:  
DO NOT MANUFACTURE  
PARTS TO THIS DRAWING**

SPECIFICATIONS SUBJECT TO CHANGE WITHOUT NOTICE  
DIMENSIONS ARE FOR REFERENCE ONLY

	S1	S2
SHAPE	PLANO	PLANO
RADIUS	∞	∞
MIN CLEAR APERTURE	Ø22.50	Ø22.50
SURFACE QUALITY	20-10	20-10
SURFACE ACCURACY	λ/10	λ/10
BEVEL	PROTECTIVE AS NEEDED	PROTECTIVE AS NEEDED

THIRD ANGLE PROJECTION

ALL DIMS IN      mm

Edmund Optics®

TITLE

25mm Dia., VIS-NIR Coated, Fused Silica Wedged Window

DWG NO

17667

SHEET

1 OF 1