

NOTES:

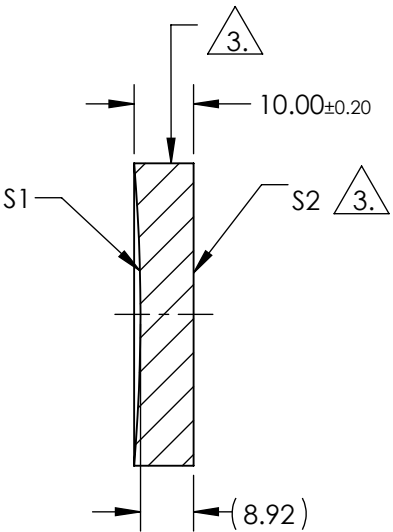
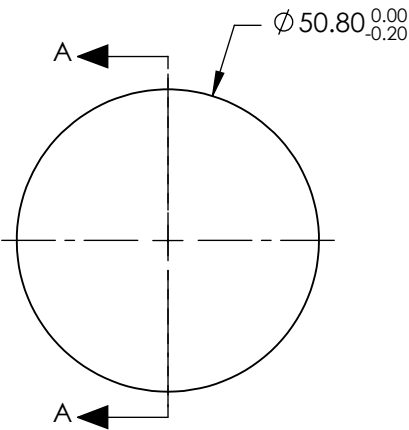
1. SUBSTRATE:  
FUSED SILICA
2. COATING (APPLY ACROSS CLEAR APERTURE)

S1: Ultrafast-Enhanced Silver  
R(AVG) >99% @ 850-1150nm @ 0° AOI  
Rs >99% @ 800-1150nm @ 45° AOI  
Rp >98.5% @ 850-1100nm @ 45° AOI  
GDD: 0 ±30 fs² @ 800 - 1150 nm

S2: NONE

3. FINE GRIND SURFACE

4. EFL (EFFECTIVE FOCAL LENGTH): 150mm
5. Damage Threshold, Pulsed:  
0.4 J/cm² @ 1030nm, 200fs, 1 pulse (typical)  
0.18 J/cm² @ 1030nm, 200fs, 100Hz, 1000 pulses (typical)



SECTION A-A

**FOR INFORMATION ONLY:  
DO NOT MANUFACTURE  
PARTS TO THIS DRAWING**

SPECIFICATIONS SUBJECT TO CHANGE WITHOUT NOTICE  
DIMENSIONS ARE FOR REFERENCE ONLY

	S1	S2
SHAPE	CONCAVE	PLANO
RADIUS	300.00	INFINITY
SURFACE QUALITY	20-10	N/A
CLEAR APERTURE	45.72mm	N/A
IRREGULARITY AT 632.8nm	0.15λ	N/A
BEVEL	PROTECTIVE AS NEEDED	PROTECTIVE AS NEEDED



ALL DIMS IN

mm



Edmund Optics®

TITLE

800-1150nm, 50.8mm Dia. x 150mm EFL,  
Ultrafast-Enhanced Silver Concave Mirror

DWG NO

17275

SHEET  
1 OF 1