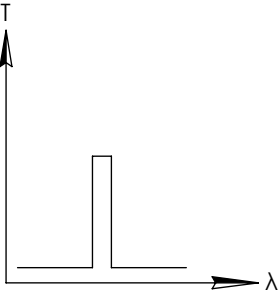
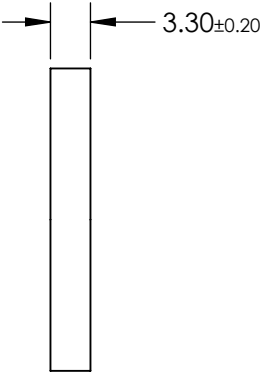
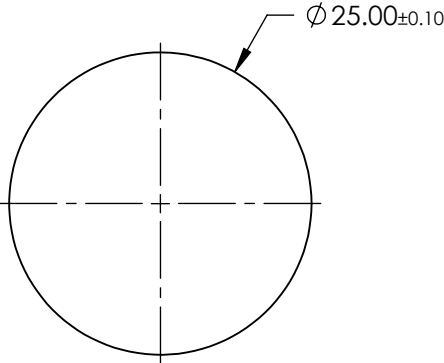
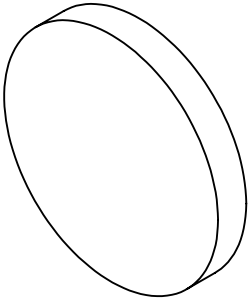


FOR INFORMATION ONLY:
DO NOT MANUFACTURE
PARTS TO THIS DRAWING



BANDPASS FILTER

| | VALUE |
|----------------------------|-----------------------------|
| CENTER WAVELENGTH (CWL) | 900 ± 5nm |
| FULL WIDTH HALF MAX (FWHM) | 50.0 ± 5nm |
| MINIMUM TRANSMISSION | ≥90% |
| BLOCKING | 200 - 1200nm |
| CLEAR APERTURE (mm) | Ø22.50 |
| SURFACE QUALITY | 80-50 |
| COATING TYPE | HARD COATED |
| DURABILITY | MIL-C-48497A, SECTION 3.4.1 |
| ENVIRONMENTAL | MIL-STD-810F, SECTION 507.4 |

SPECIFICATIONS SUBJECT TO CHANGE WITHOUT NOTICE
DIMENSIONS ARE FOR REFERENCE ONLY



| | | | | |
|------------------------|----|--------|--|-----------------|
| THIRD ANGLE PROJECTION | | TITLE | 900nm CWL, 25mm DIA., HARD COATED OD 4.0 50nm UNMOUNTED BANDPASS FILTER | |
| ALL DIMS IN | mm | DWG NO | 15169 | SHEET 1 OF 1 |