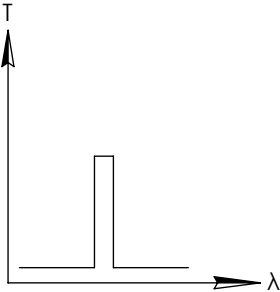
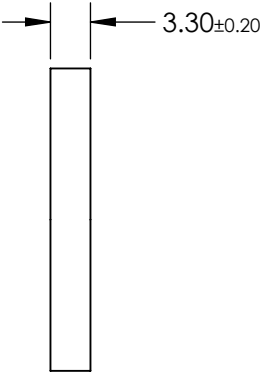
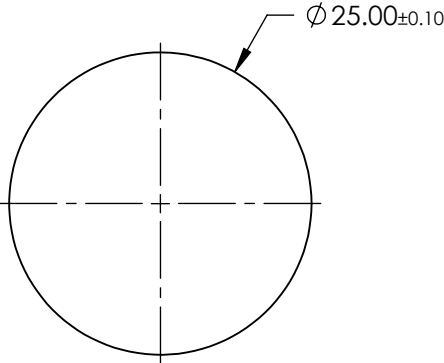
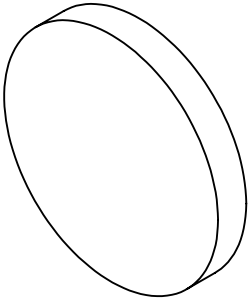


FOR INFORMATION ONLY:
DO NOT MANUFACTURE
PARTS TO THIS DRAWING



BANDPASS FILTER

| | VALUE |
|----------------------------|-----------------------------|
| CENTER WAVELENGTH (CWL) | 905 ± 2nm |
| FULL WIDTH HALF MAX (FWHM) | 10 ± 2nm |
| MINIMUM TRANSMISSION | ≥85% |
| BLOCKING | 200 - 1200nm |
| CLEAR APERTURE (mm) | Ø22.50 |
| SURFACE QUALITY | 80-50 |
| COATING TYPE | HARD COATED |
| DURABILITY | MIL-C-48497A, SECTION 3.4.1 |
| ENVIRONMENTAL | MIL-STD-810F, SECTION 507.4 |

SPECIFICATIONS SUBJECT TO CHANGE WITHOUT NOTICE
DIMENSIONS ARE FOR REFERENCE ONLY



| | | | | |
|--|----|--------|---|--------------|
| THIRD ANGLE PROJECTION  | | TITLE | 905nm CWL, 25mm DIA., HARD COATED OD 4.0 10nm UNMOUNTED BANDPASS FILTER | |
| ALL DIMS IN | mm | DWG NO | 15143 | SHEET 1 OF 1 |