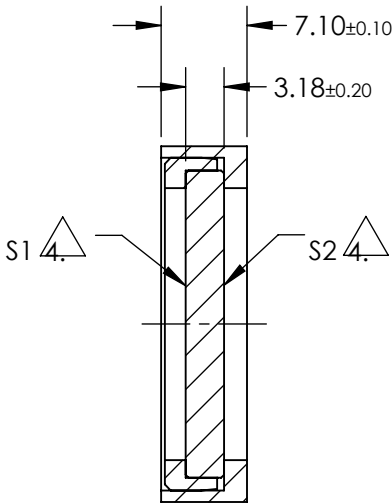
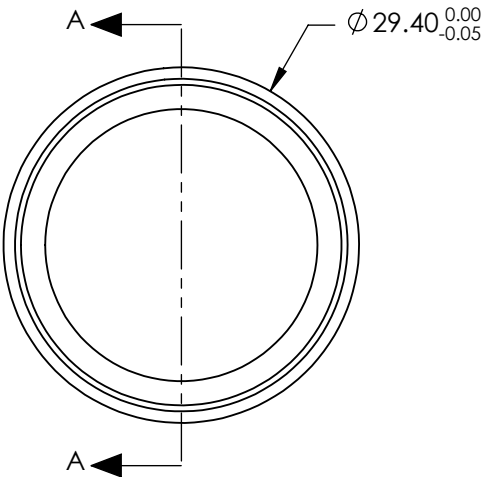


NOTES:

- 1. SUBSTRATE:  
FUSED SILICA
- 2. SURFACE S2 TO BE PARALLEL TO SURFACE S1 TO WITHIN < 3 ARCMIN
- 3. COATING PERFORMANCES ACROSS CLEAR APERTURE:  
T(ABS) > 99.5% @ 355nm @ 0° AOI
- 4. SURFACES ARE EXTREMELY FRAGILE, ANY CONTACT TO OPTICAL SURFACE WILL AFFECT PERFORMANCE. DO NOT TOUCH SURFACES AND DO NOT WIPE CLEAN.



SECTION A-A

**FOR INFORMATION ONLY:  
DO NOT MANUFACTURE  
PARTS TO THIS DRAWING**

SPECIFICATIONS SUBJECT TO CHANGE WITHOUT NOTICE  
DIMENSIONS ARE FOR REFERENCE ONLY

**EO**® Edmund Optics®

	S1	S2	THIRD ANGLE PROJECTION		TITLE	MOUNTED 1" NEBULAR™ 355nm WINDOW	
SHAPE	PLANO	PLANO					
SURFACE QUALITY	10-5	10-5					
CLEAR APERTURE	Ø20.32	Ø20.32	ALL DIMS IN	mm	DWG NO	14596	SHEET 1 OF 1