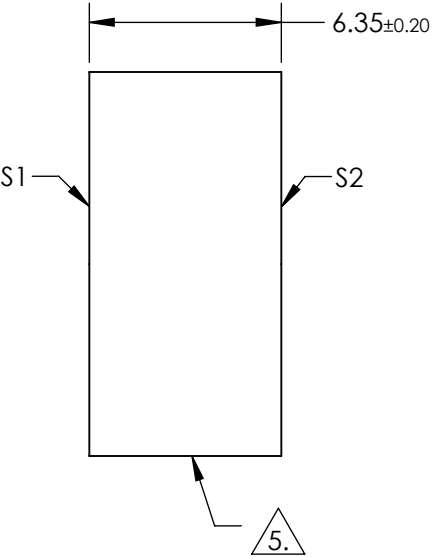
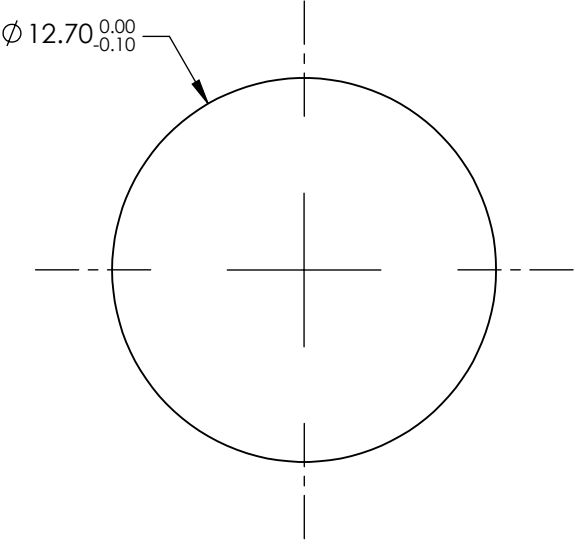


NOTES:

- 1. SUBSTRATE: FUSED SILICA
- 2. RoHS: COMPLIANT
- 3. SURFACE S2 TO BE PARALLEL TO SURFACE S1 TO WITHIN <3 ARCMIN
- 4. COATING (APPLY ACROSS COATING APERTURE)
S1& S2: R(ABS) > 99.95% @ 1064nm @45° AOI

DAMAGE THRESHOLD,
PULSED: 15 J/cm² @ 1064nm, 20ns, 20Hz


5. FINE GRIND SURFACE



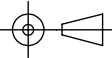
**FOR INFORMATION ONLY:
DO NOT MANUFACTURE
PARTS TO THIS DRAWING**

SPECIFICATIONS SUBJECT TO CHANGE WITHOUT NOTICE
DIMENSIONS ARE FOR REFERENCE ONLY

	S1	S2
SHAPE	PLANO	PLANO
SURFACE QUALITY	10-5	COMMERCIAL POLISH
CLEAR APERTURE	Ø10.80	N/A
BEVEL	PROTECTIVE AS NEEDED	PROTECTIVE AS NEEDED

**Edmund Optics®**

THIRD ANGLE
PROJECTION



TITLE

1064nm, 45°, 12.7mm DIA., 6.35mm THICK,
Nd:YAG IBS LASER LINE MIRROR

ALL DIMS IN

mm

DWG NO

34843

SHEET
1 OF 1