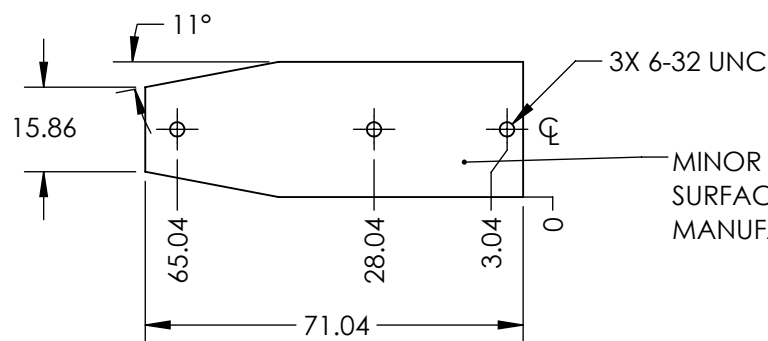
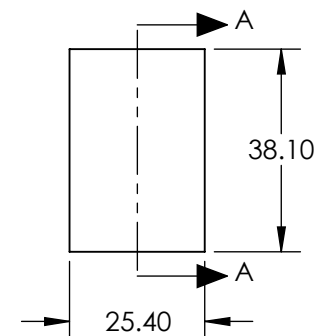
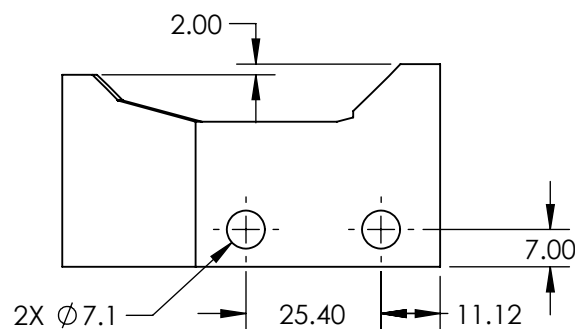
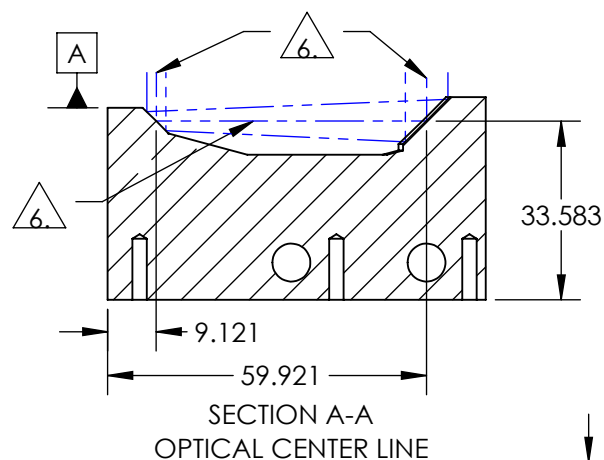
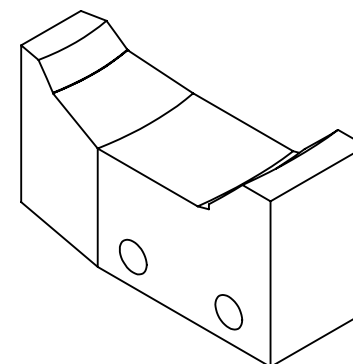
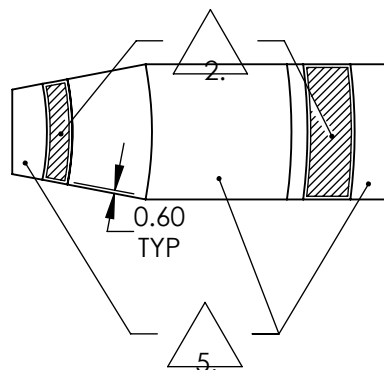


NOTES:

1. SUBSTRATE: ALUMINUM 6061-T6
2. COATING
ULTRAFAST ENHANCED SILVER

R(AVG) > 99% @ 600 - 1000nm
Rs > 99% @ 540 - 1000nm
Rp > 98.5% @ 730 - 870nm
GDD (typical): $0 \pm 20 \text{ fs}^2$ @ 600 - 1050nm
3. SURFACE ROUGHNESS: <50 Å RMS
4. SYSTEM SHALL BE ALIGNED TO DATUM A
WITH REFLECTED WAVEFRONT ERROR OF $\leq 1/10$ WAVE AT 632.8 nm FOR $\varnothing 1$ mm INPUT BEAM.
5. INTEGRATED ALIGNMENT FLATS
6. OPTICAL CENTER LINE
7. RoHS COMPLIANT



MINOR SCRATCHES ON THE NON-OPTICAL SURFACE MIGHT BE PRESENT DUE TO THE MANUFACTURING PROCESS.

**FOR INFORMATION ONLY:
DO NOT MANUFACTURE
PARTS TO THIS DRAWING**

SPECIFICATIONS SUBJECT TO
CHANGE WITHOUT NOTICE
DIMENSIONS ARE FOR
REFERENCE ONLY

EO® Edmund Optics®

SHAPE	S1 MONOLITHIC
BEVEL	PROTECTIVE AS NEEDED

THIRD ANGLE PROJECTION	TITLE	2X, Ultrafast Silver Canopus Reflective Beam Expander
ALL DIMS IN	DWG NO	13073
mm		SHEET 1 OF 1