

NOTES:

- 1. SUBSTRATE: FUSED SILICA
- 2. SURFACE S2 TO BE PARALLEL TO SURFACE S1 TO WITHIN <5 ARCMIN
- 3. COATING (APPLY ACROSS COATING APERTURE)  
S1: R(AVG) > 99.7% @ 700 - 900nm @ 45° AOI

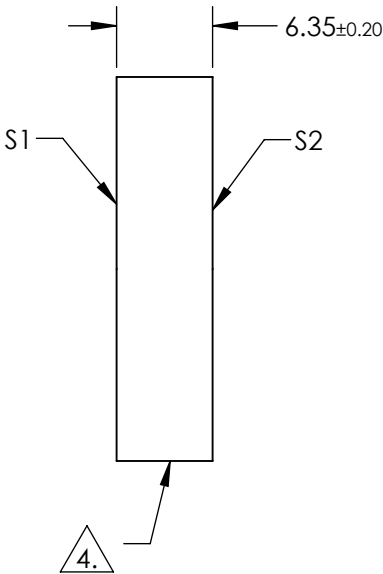
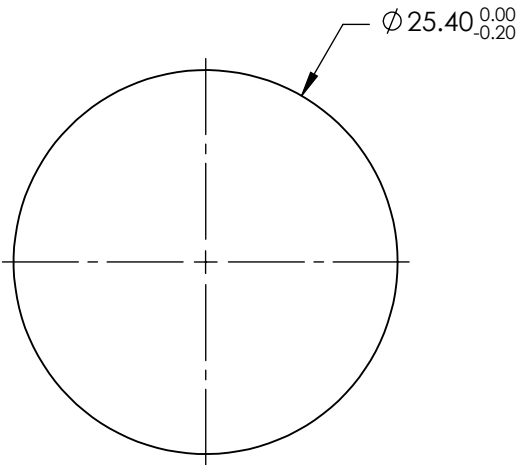
GDD:  
S-POLARIZATION: 0 ± 20fs² @ 700 - 900nm  
P-POLARIZATION: 0 ± 20fs² @ 740 - 860nm

TOD:  
S-POLARIZATION: 10fs² @ 800nm  
P-POLARIZATION: 40fs² @ 800nm

S2: NONE

4. FINE GRIND SURFACE

5. RoHS: COMPLIANT



**FOR INFORMATION ONLY:**  
**DO NOT MANUFACTURE**  
**PARTS TO THIS DRAWING**

SPECIFICATIONS SUBJECT TO CHANGE WITHOUT NOTICE  
DIMENSIONS ARE FOR REFERENCE ONLY

	S1	S2
SHAPE	PLANO	PLANO
SURFACE QUALITY	10-5	COMMERCIAL POLISH
SURFACE FLATNESS	$\lambda/10$	N/A
CLEAR APERTURE	$\varnothing 21.84$	N/A
BEVEL	PROTECTIVE AS NEEDED	PROTECTIVE AS NEEDED



ALL DIMS IN mm

**Edmund Optics®**

TITLE 700 - 900nm, 25.4mm DIA., ULTRAFAST  
BROADBAND LASER MIRROR

DWG NO 62766 SHEET 1 OF 1