

NOTES:

1. SUBSTRATE: FUSED SILICA
2. SURFACE S2 TO BE PARALLEL TO SURFACE S1 TO WITHIN < 10 ARCSEC
3. COATING (APPLY ACROSS COATING APERTURE)
 S1: $R_a = 70 \pm 3\%$ @ 680-1020nm @ 45°
 $R_p = 56 \pm 3\%$ @ 680-1020nm @ 45°
 $R_s = 85 \pm 3\%$ @ 680-1020nm @ 45°

GDD (T): $\pm 15 \text{ fs}^2$ @ 45°
 GDD (R): $\pm 20 \text{ fs}^2$ @ 45°

S2: $AR_s < 2\%$ @ 650-1100nm @ 45°
 $AR_p < 1.5\%$ @ 650-1100nm @ 45°

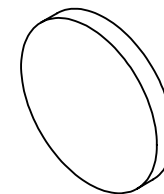
GDD (T): $\pm 15 \text{ fs}^2$ @ 45°
 GDD (R): $\pm 20 \text{ fs}^2$ @ 45°

4. FINE GRIND SURFACE

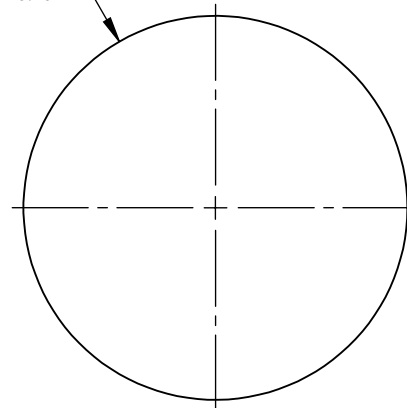
5. TRANSMITTED WAVEFRONT DISTORTION @ 632.8nm:
 $\lambda/8$ @ 633nm @ 45° AOI

6. RoHS: COMPLIANT

**FOR INFORMATION ONLY:
 DO NOT MANUFACTURE
 PARTS TO THIS DRAWING**



$\varnothing 25.40^{0.00}_{-0.10}$



$3.00^{0.00}_{-0.10}$

S1

S2

4.

SPECIFICATIONS SUBJECT TO CHANGE WITHOUT NOTICE
 DIMENSIONS ARE FOR REFERENCE ONLY

	S1	S2
SHAPE	PLANO	PLANO
SURFACE FLATNESS @ 632.8nm	$\lambda/6$	N/A
SURFACE QUALITY	10 - 5	10 - 5
CLEAR APERTURE	$\varnothing 20.32$	$\varnothing 20.32$
BEVEL	PROTECTIVE AS NEEDED	PROTECTIVE AS NEEDED



ALL DIMS IN

mm



Edmund Optics®

TITLE

25.4mm NON-POLARIZING BEAM SPLITTER R/T
 70:30

DWG NO

13832

SHEET
 1 OF 1