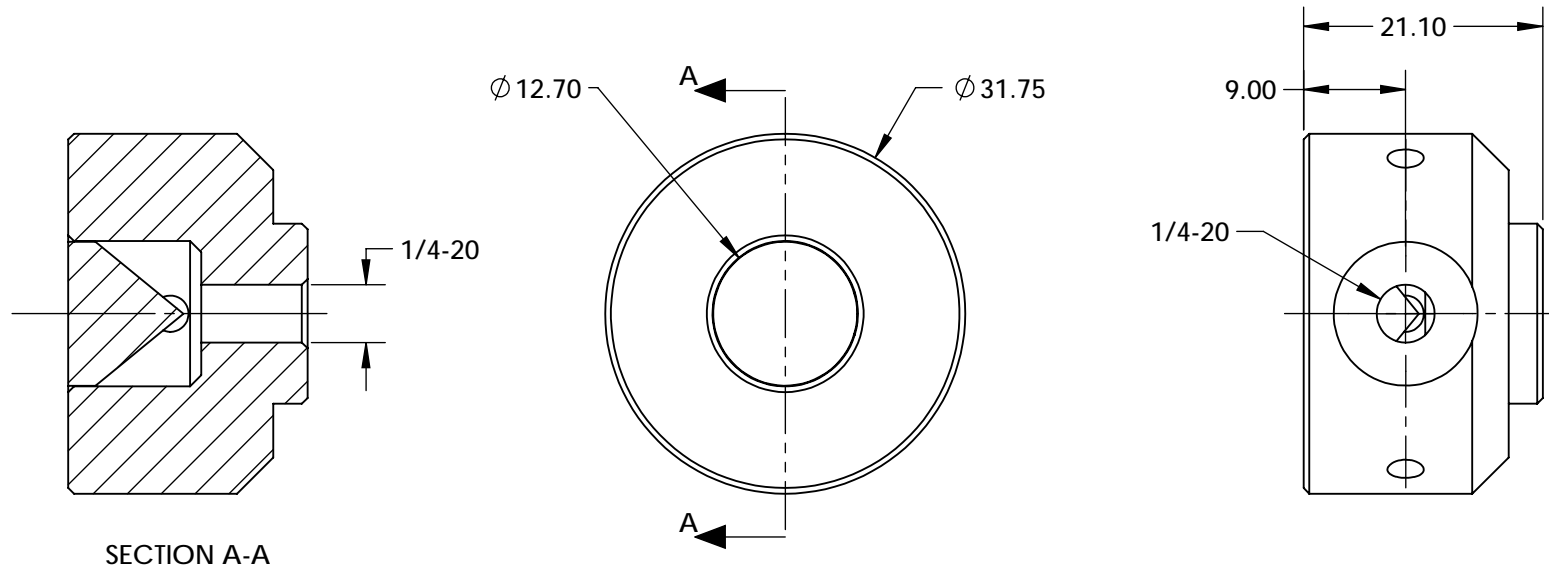


NOTES:

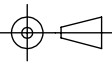
1. MATERIAL:
HOUSING: BLACK ANODIZED ALUMINUM
CORNER CUBE: N-BK7
2. COATING SPECIFICATION (APPLY ACROSS CLEAR APERTURE)
REFLECTIVE SURFACES: $R(ABS) > 97\%$ @ 400 - 2500nm @ 0° AOI
 $R(AVG) > 98\%$ @ 400 - 2500nm @ 0° AOI
ENTRANCE: $R(AVG) \leq 0.4\%$ @ 425 - 675nm
3. RoHS: COMPLIANT



SPECIFICATIONS SUBJECT TO CHANGE WITHOUT NOTICE
DIMENSIONS ARE FOR REFERENCE ONLY

**FOR INFORMATION ONLY:
DO NOT MANUFACTURE
PARTS TO THIS DRAWING**

EO® Edmund Optics®

THIRD ANGLE PROJECTION 		TITLE	12.7mm SILVER AND VIS 0° COATED, MOUNTED CORNER CUBE RETROREFLECTOR	
ALL DIMS IN	mm	DWG NO	12216	SHEET 1 OF 1