

NOTES:

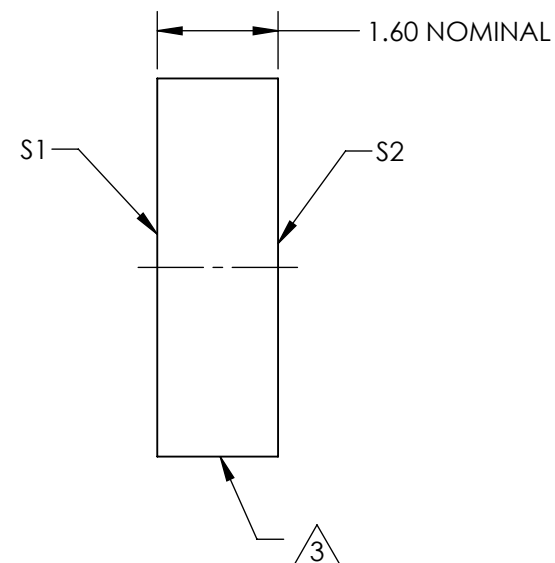
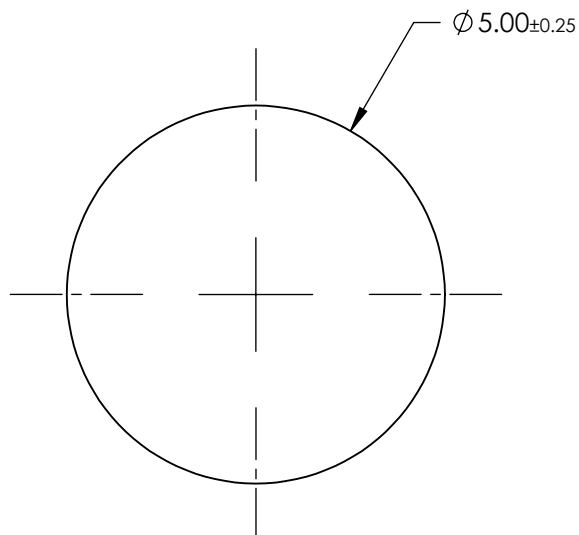
1. SUBSTRATE MATERIAL: Float Glass
2. COATING (APPLY ACROSS CLEAR APERTURE, SPECIFICATION APPLIES AFTER SANDBLASTING):

S1: R(AVG) >96% @ 700 - 2000nm
R(AVG) >96% @ 2000 - 10,000nm

S2: NONE

 FINE GRIND SURFACE

4. RoHS: COMPLIANT



**FOR INFORMATION ONLY:
DO NOT MANUFACTURE
PARTS TO THIS DRAWING**

SPECIFICATIONS SUBJECT TO CHANGE WITHOUT NOTICE
DIMENSIONS ARE FOR REFERENCE ONLY

 **Edmund Optics®**

	S1	S2	THIRD ANGLE PROJECTION 		TITLE	5mm Dia. Protected Gold Coated, Reflective Diffuser	
MIN CLEAR APERTURE	Ø4.00	N/A	ALL DIMS IN	mm	DWG NO	12456	SHEET 1 OF 1
BEVEL	PROTECTIVE AS NEEDED	PROTECTIVE AS NEEDED					