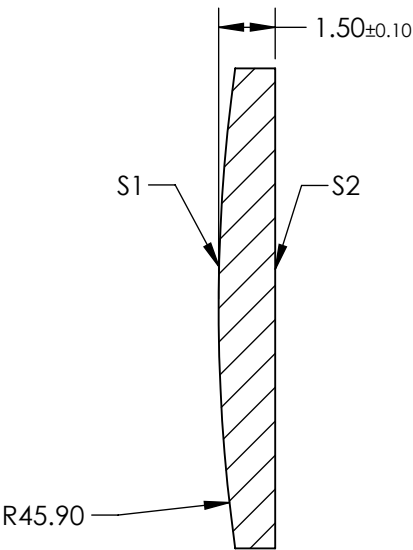
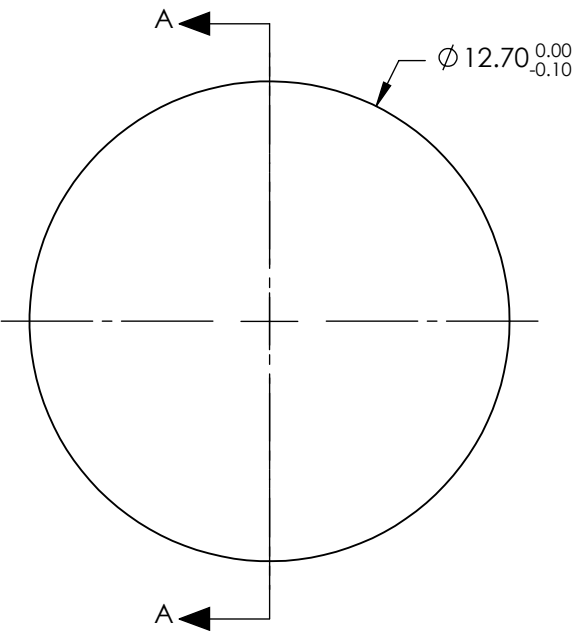


NOTES:

- 1. SUBSTRATE: FUSED SILICA
- 2. COATING:  
S1 & S2: R(ABS) <0.5% @ 370 - 550nm
- 3. CENTERING: < 3 ARCMIN
- 4. RoHS: COMPLIANT


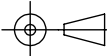
FOR INFORMATION ONLY:  
DO NOT MANUFACTURE  
PARTS TO THIS DRAWING



SECTION A-A

SPECIFICATIONS SUBJECT TO CHANGE WITHOUT NOTICE  
DIMENSIONS ARE FOR REFERENCE ONLY

	S1	S2
SHAPE	CONVEX	PLANO
SURFACE QUALITY	20-10	20-10
CLEAR APERTURE	Ø11.43	Ø11.43
BEVEL	PROTECTIVE AS NEEDED	PROTECTIVE AS NEEDED

EFL: 100.12mm		<div> Edmund Optics®</div>		
BFL: 99.09mm				
<div>THIRD ANGLE PROJECTION</div> 		TITLE	12.7mm Diameter x 100mm FL, 370-550nm Coated, Ultrafast Thin PCX Lens	
		ALL DIMS IN	mm	DWG NO