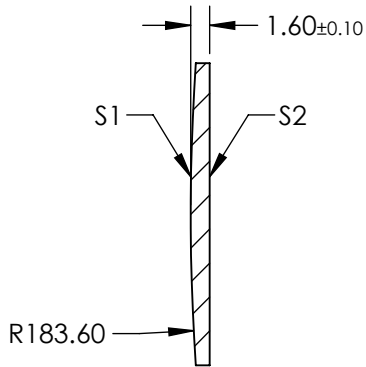
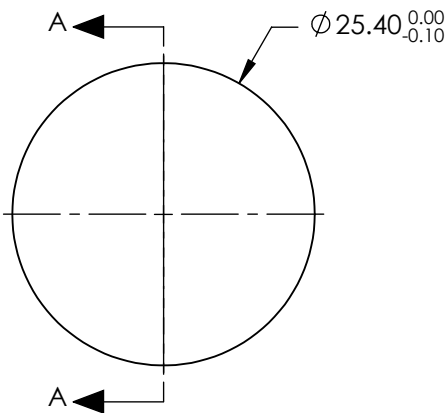


- NOTES:
- 1. SUBSTRATE: FUSED SILICA
 - 2. COATING:
S1 & S2: R(ABS) <0.1% @ 950 - 1150nm
 - 3. CENTERING: < 3 ARCMIN
 - 4. RoHS: COMPLIANT


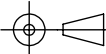
**FOR INFORMATION ONLY:
DO NOT MANUFACTURE
PARTS TO THIS DRAWING**



SECTION A-A

SPECIFICATIONS SUBJECT TO CHANGE WITHOUT NOTICE
DIMENSIONS ARE FOR REFERENCE ONLY

| | S1 | S2 |
|-----------------|----------------------|----------------------|
| SHAPE | CONVEX | PLANO |
| SURFACE QUALITY | 20-10 | 20-10 |
| CLEAR APERTURE | Ø22.86 | Ø22.86 |
| BEVEL | PROTECTIVE AS NEEDED | PROTECTIVE AS NEEDED |

| | | | | |
|---|----|--|---|-----------------|
| EFL: 400.47 mm | | <div><div> Edmund Optics®</div></div> | | |
| BFL: 399.37 mm | | | | |
| <div>THIRD ANGLE PROJECTION</div>  | | TITLE | 25.4mm Diameter x 400mm FL, 950-1150nm Coated, Ultrafast Thin PCX Lens | |
| ALL DIMS IN | mm | DWG NO | 11645 | SHEET 1 OF 1 |