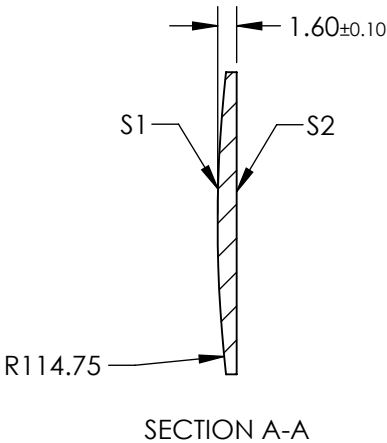
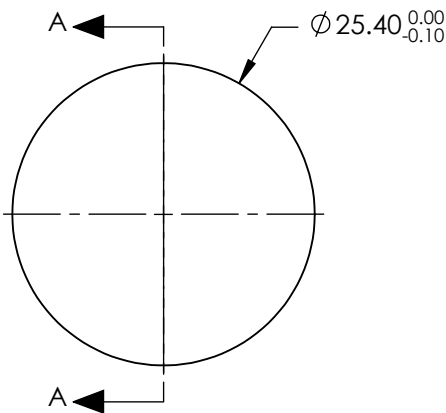



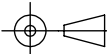
- NOTES:
- 1. SUBSTRATE: IR GRADE FUSED SILICA
 - 2. COATING:
S1 & S2: R(ABS) <0.1% @ 1900 - 2200nm
 - 3. CENTERING: < 3 ARCMIN
 - 4. RoHS: COMPLIANT

**FOR INFORMATION ONLY:
DO NOT MANUFACTURE
PARTS TO THIS DRAWING**



SPECIFICATIONS SUBJECT TO CHANGE WITHOUT NOTICE
DIMENSIONS ARE FOR REFERENCE ONLY

	S1	S2
SHAPE	CONVEX	PLANO
SURFACE QUALITY	20-10	20-10
CLEAR APERTURE	Ø22.86	Ø22.86
BEVEL	PROTECTIVE AS NEEDED	PROTECTIVE AS NEEDED

EFL: 250.29 mm		<div> Edmund Optics®</div>		
BFL: 249.19 mm				
<div>THIRD ANGLE PROJECTION</div> 		TITLE	25.4mm Diameter x 250mm FL, 1900-2200nm Coated, IR Ultrafast Thin PCX Lens	
		ALL DIMS IN	mm	DWG NO